

Promat

Promat Australia Pty. Ltd.

SYSTEM CERTIFICATE*

This is to certify that

PROMATECT® 100

has been tested/approved for lightweight partitions

in accordance with “Australian Standard 1530: Part 4

Methods for fire tests on building materials, components, and structures”

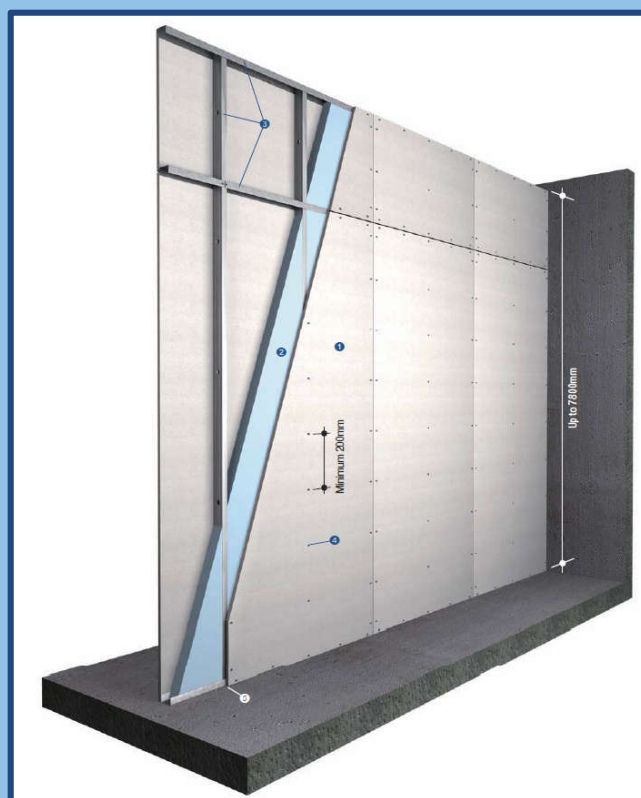
PROMATECT® 100 Steel Stud Partitions

(Refer to report WFRA 41088, WFRA41096, WFRA 45883, FSRG 2014-054, BRE P106900-1005 Review 1, Issue 1)

PROMATECT® 100
Load-Bearing and Non-Load Bearing
Steel Stud Partitions

PROMATECT® 100 Thickness	Stud	FRL	Maximum Height
15mm	Single	-/60/60	5,000mm
20mm	Single	-/120/90	5,000mm
20mm	Single	-/120/120	4,000mm
20mm	Single	120/120/120	4,800mm
40mm	Single	-/240/240	5,000mm

Alternative framing solutions for walls up to 15m



* This is NOT a test certificate. For installation instructions or further information please contact Promat Australia Pty. Ltd.

Dial: 1800 PROMAT (776 628)

Email: PAPL.Mail@etexgroup.com Visit: www.promat.com