

Promat

Promat Australia Pty. Ltd.

SYSTEM CERTIFICATE*

This is to certify that

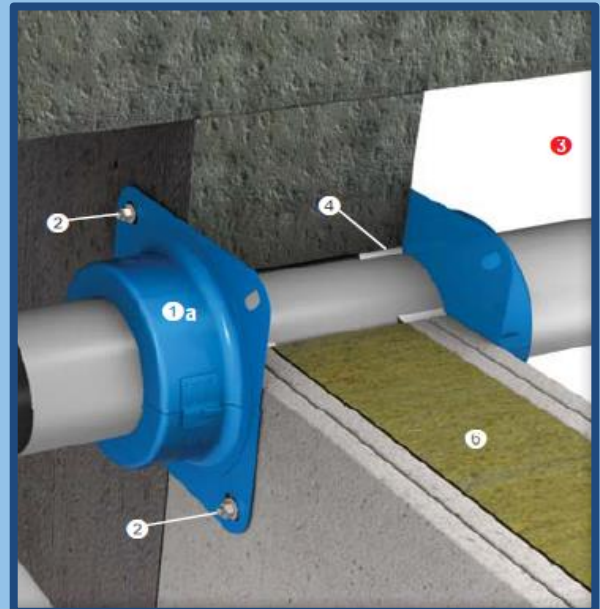
PROMASEAL® FC Retrofit Collars

For 128mm lightweight partitions and 78mm Speedpanel partitions
have been tested/approved in accordance with
“Australian Standard 1530: Part 4: 2005
Methods for fire tests on building materials, components and structures”
protecting uPVC and HDPE pipe penetrations

(Refer to assessment EWFA 29592300.1)

In 128mm lightweight FR plasterboard partitions

Pipe Material	Pipe Size (DN)	Protection	FRL
uPVC	40	PROMASEAL® FC 40	-/240/180
	50	PROMASEAL® FC 50	-/120/120
	65	PROMASEAL® FC 65	-/180/180
	80	PROMASEAL® FC 80	-/120/120
	100	PROMASEAL® FC 100	-/120/120
	150	PROMASEAL® FC 150	-/180/120
	250	PROMASEAL® FC 250	-/180/180
	300	PROMASEAL® FC 300	-/180/180
HDPE	40	PROMASEAL® FC 40	-/180/180
	63	PROMASEAL® FC 65	-/120/120
	75	PROMASEAL® FC 80	-/120/120
	110	PROMASEAL® FC 100	-/180/120
	125	PROMASEAL® FC 150	-/120/120
	250	PROMASEAL® FC 250	-/120/120
	315	PROMASEAL® FC 300	-/180/180



* This is NOT a test certificate. For installation instructions or further information please contact Promat Australia Pty. Ltd.

Dial: 1800 PROMAT (776 628)

Email: mail@promat.com.au

Visit: www.promat.com.au

Head Office
New South Wales Office
Victoria Office
Queensland Office

1 Scotland Road, Mile End South, SA 5031 AUSTRALIA
Unit 1, 175 Briens Road, Northmead, NSW 2152 AUSTRALIA
Suite 205, 198 Harbour Esplanade, Docklands, VIC 3008 AUSTRALIA
1/68 Lisgar Street, Virginia, QLD 4014 AUSTRALIA

an **etex** company

Promat

Promat Australia Pty. Ltd.

SYSTEM CERTIFICATE*

This is to certify that

PROMASEAL® FC Retrofit Collars

For 128mm lightweight partitions and 78mm Speedpanel partitions have been tested/approved in accordance with “Australian Standard 1530: Part 4: 2005 Methods for fire tests on building materials, components and structures” protecting uPVC and HDPE pipe penetrations

(Refer to assessment EWFA 29592300.1)

In 78mm Speedpanel				
Pipe Material	Pipe Size (DN)	Protection	Local Thickening	FRL
uPVC	40	PROMASEAL® FC 40	25mm PROMATECT® 50 or 25mm PROMATECT® 100 both sides of the wall extending a minimum of 100mm beyond the extents of the collar	-/240/180
	50	PROMASEAL® FC 50		-/120/120
	65	PROMASEAL® FC 65		-/180/180
	80	PROMASEAL® FC 80		-/120/120
	100	PROMASEAL® FC 100		-/120/120
	150	PROMASEAL® FC 150		-/180/120
HDPE	40	PROMASEAL® FC 40		-/180/180
	50	PROMASEAL® FC 50		-/120/120
	63	PROMASEAL® FC 65		-/120/120
	110	PROMASEAL® FC 100		-/180/120
Coestilen® HDPE	50	PROMASEAL® FC 50		-/120/120
	75	PROMASEAL® FC 80		-/120/120
	110	PROMASEAL® FC 100		-/120/120
	125	PROMASEAL® FC 150		-/120/120
	160	PROMASEAL® FC 150	-/120/120	
	200	PROMASEAL® FC 250	-/120/120	
	250	PROMASEAL® FC 250	-/120/120	

* This is NOT a test certificate. For installation instructions or further information please contact Promat Australia Pty. Ltd.

Dial: 1800 PROMAT (776 628)

Email: mail@promat.com.au

Visit: www.promat.com.au

Head Office
New South Wales Office
Victoria Office
Queensland Office

1 Scotland Road, Mile End South, SA 5031 AUSTRALIA
 Unit 1, 175 Briens Road, Northmead, NSW 2152 AUSTRALIA
 Suite 205, 198 Harbour Esplanade, Docklands, VIC 3008 AUSTRALIA
 1/68 Lisgar Street, Virginia, QLD 4014 AUSTRALIA

an etex company