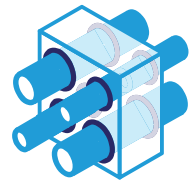


# Promat

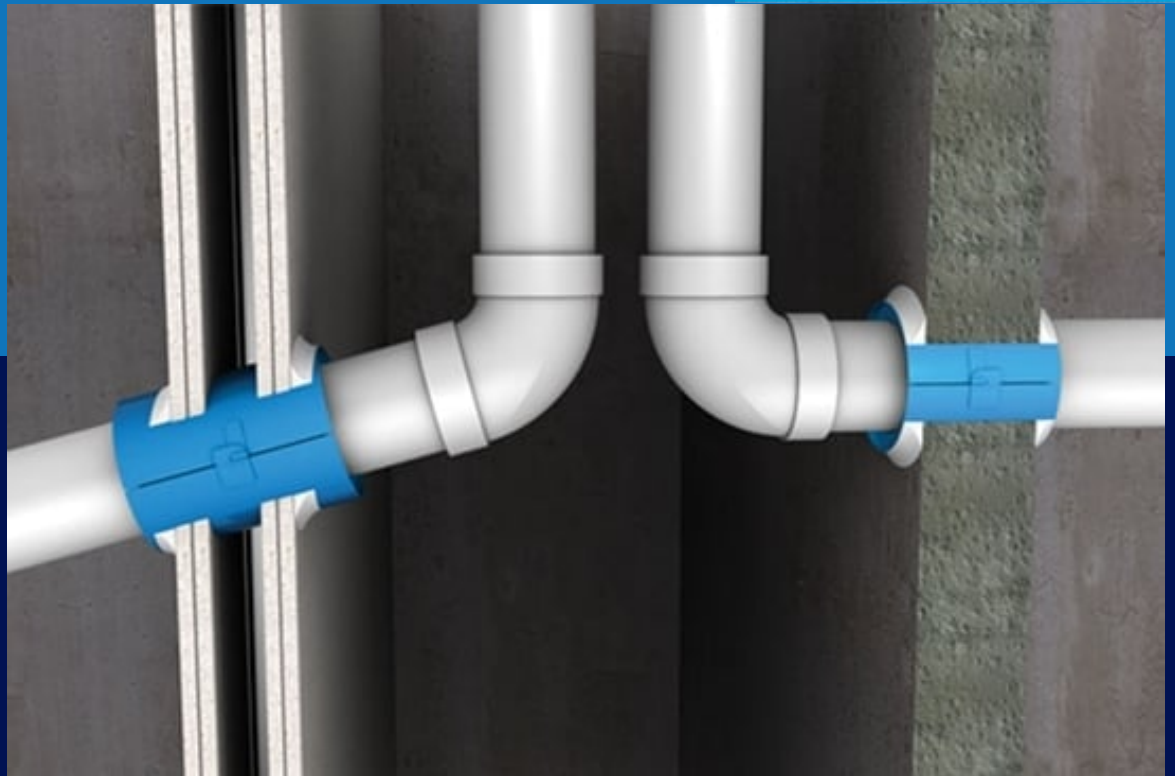


Penetration seal

# PROMASEAL<sup>®</sup> FCW

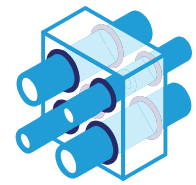
## Wall Collar

## Installation Instructions



[www.promat.com](http://www.promat.com)

**etex** inspiring ways  
of living



## PROMASEAL® FCW Wall Collars

are designed for insertion into wall elements made of plasterboard, Speedpanel, concrete, AAC panels, masonry, PROMASEAL® Bulkhead Batts or CAFCO® barriers. PROMASEAL® FCW Wall Collars have been tested up to FRL -/120/120 with HDPE or uPVC pipes up to 162mm outside diameter, in accordance with the criteria of AS1530.4: 2014 and AS4072.1:2005. The collar can be split for retrofit where necessary. Consult approval documents or PROMAT Fire Collar Selector app for specific wall and pipe types that are approved.

### Installation method

#### Retrofit installation to lightweight walls

Locate the collar in a central position in the partition. The annular gaps between the collar and wall must be less than 20mm and filled with PROMASEAL® A Acrylic Sealant to the depth of the wall lining. If the gap is greater than 20mm, then it must be reduced with either the same material that the wall is built from, or PROMASEAL® Mortar. If there is a possibility of pipe movement then a bead of PROMASEAL® A Acrylic Sealant should be installed between the Mortar and collar to reduce the possibility of cracking

Do NOT obstruct the perforated mesh at each end of the collar. Maximum wall thickness for a single collar is 146mm. For thicker walls, multiple collars, installed end to end are approved. Minimum wall thickness for collars up to 100mm is 48mm. For 150mm collars minimum wall thickness is 116mm. If the partition is less than 116mm thick then PROMASEAL® A Acrylic Sealant must be applied to the exposed shell of the collar. Refer to Promat for further information.

PROMASEAL® Wall Collar can be installed on an angle to the face of the wall, provided that the collar has the same exposure as the tested system. Refer to Promat for further information

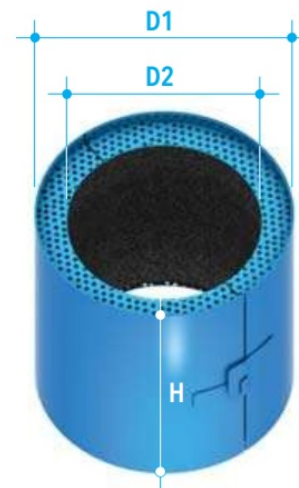
### Typical specification

Where plastic pipes penetrate fire resistant walls, use PROMASEAL® FCW Wall Collars, as tested to AS1530.4: 2014 and AS4072.1:2005, to maintain the fire resistance of the element. All details in accordance with the manufacturer's instructions. All work to be certified in an approved manner.

### Approvals

Pipe materials and sizes approved in fire rated plasterboard wall consisting of 2 x 13mm layers on each face. For other wall types consult the Promat Fire Collar Selector App or contact Promat

Code no.	Pipe material	Pipe size	FRL
FCW40	uPVC	40mm	-/120/120
FCW50	uPVC	50mm	-/120/120
FCW65	uPVC	65mm	-/120/120
FCW100	uPVC	100mm	-/120/120
FCW150	uPVC	150mm	-/120/120
FCW40	HDPE	40mm	-/120/120
FCW50	HDPE	50mm	-/120/120
FCW65	HDPE	65mm	-/120/120
FCW100	HDPE	100mm	-/120/120



### Dimensions

Code no.	Body		
	H	D1	D2
FCW40	120mm	80mm*	47mm
FCW50	120mm	90mm*	60mm
FCW65	120mm	107mm*	75mm
FCW100	120mm	153mm*	116mm
FCW150	120mm	203mm*	164mm

\*Includes 3mm for clip

Promat provides a wide range of systems for compartmentation, fire resistant air and cable ducts, structural steel protection, fire stopping and partitions. For assistance with any passive fire protection problems, please consult Promat.

#### Promat Australia Pty Ltd

##### South Australia office

📞 1800 Promat (776 628)  
 ☎ +61 8 8352 1014  
 ✉ PAPL.mail@etexgroup.com

##### New South Wales office

📞 1800 Promat (776 628)  
 ☎ +61 2 9630 0258  
 ✉ PAPL.mail@etexgroup.com

##### Victoria office

📞 1800 Promat (776 628)  
 ☎ 1800 334 598  
 ✉ PAPL.mail@etexgroup.com

##### Queensland office

📞 1800 011 376  
 ☎ 1800 334 598  
 ✉ PAPL.mail@etexgroup.com