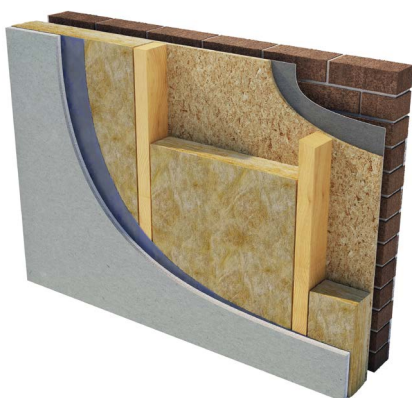
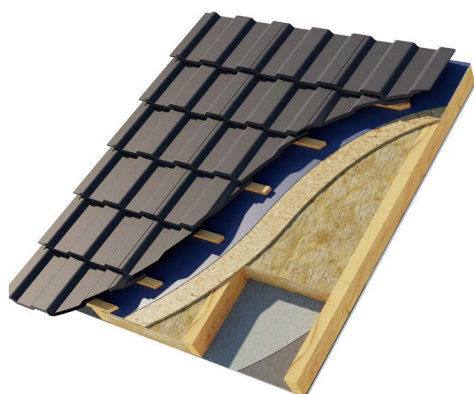


Timber & Rafter Batt 32.

March 2026 | Data Sheet



Description.

Superglass Timber & Rafter Batt 32 is a non-combustible glass mineral wool insulation batt. The flexible batt is supplied at 570mm wide to allow friction fitting between common stud/rafter spacings, minimising gaps at joints and reducing on-site cutting & waste.

Application.

Superglass Timber & Rafter Batt 32 is designed to provide thermal insulation for external timber frame walls, warm pitched roofs, and suspended timber floors.

Performance.

Thermal Conductivity:

Declared thermal conductivity (lambda (λ) value) of 0.032W/mK.

Fire Classification:

Deemed non-combustible with a fire classification of Euroclass A1 (the highest possible rating) when tested to EN 13501-1:2018 Reaction to Fire.

Typical applications:
External timber frame walls and warm pitched roofs.



Thermal
Insulation



Non-
combustible



Recycled
Glass Content

intelligent environments
Superglass
by etex

superglass.co.uk

Timber & Rafter Batt 32.

Technical Characteristics.

Product Specification.

Thickness (mm)	Length (mm)	Width (mm)	Batts per pack	Pack Area (m ²)	Packs per pallet	Thermal Conductivity (W/mK)	Thermal Resistance (m ² K/W)	Product Code
140	1175	570	4	2.679	20	0.032	4.35	2145033

Please note that all dimensions are nominal.

Additional Information.

Vapour Resistivity.

The product has a nominal vapour resistivity of 5 MNs/gm.

Environmental Credentials.

- Our products and their pallets are wrapped in low-density polyethylene (LDPE4) plastic, which contains a minimum 30% recycled material and is fully recyclable. Before recycling, please consult your local authority for guidance.
- ISO 14001:2015 - Environmental Management Systems (EMS) certified. Certificate number: EMS 646508.
- Contains no ozone-depleting substances or greenhouse gases.
- Made from up to 84% recycled glass.

Environmental Product Declarations (EPDs) for our products, detailing their overall environmental performance, are published and accessible on our website.

Standards and Approvals.

Manufactured in accordance with:

- BS EN 13162:2012+A1:2015 Thermal insulation products for buildings - Factory made mineral wool (MW) products.
- BS EN 13172: 2012 Thermal insulation products - Evaluation of conformity.
- ISO 9001:2015 - Quality Management Systems (QMS). Certificate number: FM 02264.

Certifications.

- UKCA certified to BS EN 13162:2012+A1:2015. Certificate number: 0086 CPR 469699.
- CE marked to EN 13162:2012+A1:2015. Certificate number: 0751-CPR-399.0-01.
- CCPI (Code for Construction Products Information) Assessment Mark. Certificate number: 005800130/0227.

EUCEB (European Certification Board of Mineral Wool Products).

All Superglass glass mineral wool products are made of non-classified fibres and are certified by EUCEB. EUCEB is a voluntary initiative by the mineral wool industry. It is an independent certification authority that guarantees that products are made of fibres which comply with the exoneration criteria for carcinogenicity (Note Q) of the Regulation (EC) 1272/2008. Certificate number: BEUC-511-27949-491-14462.

Handling & Storage.

The product must be stored and handled in a manner that ensures it remains clean and undamaged. It is supplied compression-packed in polythene, which provides short-term protection only. For long-term protection, store the product indoors or under a waterproof covering, raised off the ground, to prevent weather-related damage.

During construction, all exposed areas of the product must be covered at the end of each working day and during adverse weather conditions, including rain, wind, or snow. Use polythene sheeting or an equivalent protective cover to prevent water saturation. The product must not be left permanently exposed to the elements.

All Superglass products are non-hygroscopic, will not rot, degrade, or sustain vermin and will not encourage the growth of mould, bacteria, or fungi.



Etex UK Insulation Limited | Thistle Industrial Estate | Kerse Road | Stirling | FK7 7QQ | UK

TRB3210
March 2026

Technical

Hotline: 0808 1645 134
Email: technical.stirling@etexgroup.com

Customer Services

Tel: 01786 451170
Email: customerservice.stirling@etexgroup.com

Social

[superglass_uk](#)
[superglassuk/](#)
[superglassinsulationuk](#)