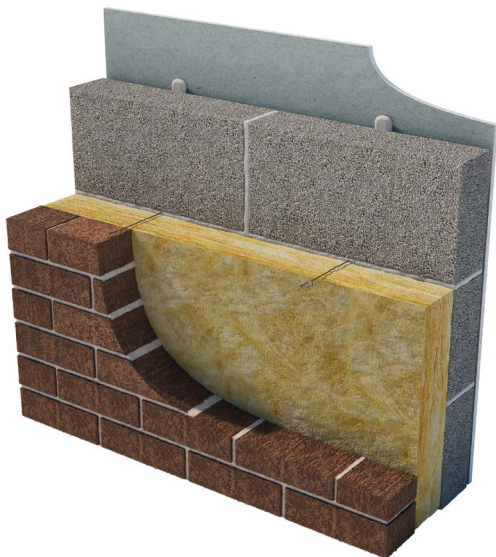


Superwall 36 Cavity Batt.

March 2026 | Data Sheet



Description.

Superglass Superwall 36 is a British Board of Agrément (BBA) approved, non-combustible glass mineral wool insulation cavity wall batt, manufactured with a water-repellent additive to resist moisture ingress. The flexible batt is supplied at 455mm wide to allow friction fitting between standard vertical wall tie spacings, reducing the need for on-site cutting and waste.

Application.

Superglass Superwall 36 is designed to provide thermal insulation in full or partial fill in new external masonry cavity walls, up to 25 metres in height for full fill and without restriction for partial fill in buildings of a domestic and non-domestic nature. Additional requirements apply for buildings above 12 metres in height for full fill and above 25 metres in height for partial fill, please refer to the product BBA certificate for more information.

Superwall 36 is BBA approved for use in all UK exposure zones (subject to conditions detailed in the BBA Certificate).



Performance.

Thermal Conductivity:


Declared thermal conductivity (lambda (λ) value) of 0.036W/mK.

Fire Classification:

Deemed non-combustible with a fire classification of Euroclass A1 (the highest possible rating) when tested to EN 13501-1:2018 Reaction to Fire.



Typical applications:
External masonry cavity walls.



Thermal
Insulation



Non-
combustible



Recycled
Glass Content

intelligent environments
Superglass
by etex

superglass.co.uk

Superwall 36 Cavity Batt.

Technical Characteristics.

Product Specification.

Thickness (mm)	Length (mm)	Width (mm)	Batts per pack	Pack Area (m ²)	Packs per pallet	Thermal Conductivity (W/mK)	Thermal Resistance (m ² K/W)	Product Code
50	1200	455	16	8.736	30	0.036	1.35	2144288
75	1200	455	10	5.460	30	0.036	2.05	2144289
85	1200	455	8	4.368	30	0.036	2.35	2144405
90	1200	455	8	4.368	30	0.036	2.50	2144817
100	1200	455	8	4.368	30	0.036	2.75	2144290
125	1200	455	6	3.276	30	0.036	3.45	2144406
150	1200	455	6	3.276	30	0.036	4.15	2144291

Please note that all dimensions are nominal.

Additional Information.

Vapour Resistivity.

The product has a nominal vapour resistivity of 5 MNs/gm.

Water Resistance.

Constructions incorporating the product and built in accordance with the Standards listed in section 4.4 of BBA Certificate 89/2231 Product Sheet 2, will resist the transfer of precipitation to the inner leaf and satisfy the national Building Regulations.

Below DPC level.

The product may be used in situations where it bridges the DPC in walls; dampness from the ground will not pass through to the inner leaf provided the wall is detailed in accordance with the requirements and provisions of the national Building Regulations.

Environmental Credentials.

- Our products and their pallets are wrapped in low-density polyethylene (LDPE4) plastic, which contains a minimum 30% recycled material and is fully recyclable. Before recycling, please consult your local authority for guidance.
- ISO 14001:2015 – Environmental Management Systems (EMS) certified. Certificate number: EMS 646508.
- Contains no ozone-depleting substances or greenhouse gases.
- Made from up to 84% recycled glass.

Environmental Product Declarations (EPDs) for our products, detailing their overall environmental performance, are published and accessible on our website.

Standards and Approvals.

Manufactured in accordance with:

- BS EN 13162:2012+A1:2015 Thermal insulation products for buildings - Factory made mineral wool (MW) products.
- BS EN 13172: 2012 Thermal insulation products - Evaluation of conformity.

- ISO 9001:2015 – Quality Management Systems (QMS). Certificate number: FM 02264.

Certifications.

- UKCA certified to BS EN 13162:2012+A1:2015. Certificate number: 0086 CPR 469699.
- CE marked to EN 13162:2012+A1:2015. Certificate number: 0751-CPR-399.0-01.
- BBA certified for full and partial fill applications. Certificate number: 89/2231.
- CCPI (Code for Construction Products Information) Assessment Mark. Certificate number: 005800103/1026.

EUCERB (European Certification Board of Mineral Wool Products).

All Superglass glass mineral wool products are made of non-classified fibres and are certified by EUCERB. EUCERB is a voluntary initiative by the mineral wool industry. It is an independent certification authority that guarantees that products are made of fibres which comply with the exonerated criteria for carcinogenicity (Note Q) of the Regulation (EC) 1272/2008. Certificate number: BEUC-511-27949-491-14462.

Handling & Storage.

The product must be stored and handled in a manner that ensures it remains clean and undamaged. It is supplied compression-packed in polythene, which provides short-term protection only. For long-term protection, store the product indoors or under a waterproof covering, raised off the ground, to prevent weather-related damage.

During construction, all exposed areas of the product must be covered at the end of each working day and during adverse weather conditions, including rain, wind, or snow. Use polythene sheeting or an equivalent protective cover to prevent water saturation. The product must not be left permanently exposed to the elements.

All Superglass products are non-hygroscopic, will not rot, degrade, or sustain vermin and will not encourage the growth of mould, bacteria, or fungi.



Etex UK Insulation Limited | Thistle Industrial Estate | Kerse Road | Stirling | FK7 7QQ | UK

S3611
March 2026

Technical

Hotline: 0808 1645 134
Email: technical.stirling@etexgroup.com

Customer Services

Tel: 01786 451170
Email: customerservice.stirling@etexgroup.com

Social

[superglass_uk](#)
[superglassuk/](#)
[superglassinsulationuk](#)