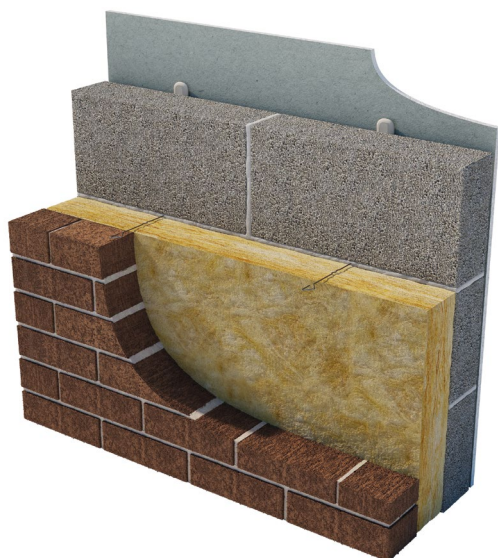


# Superwall 32 Cavity Batt.

November 2025 | Data Sheet



## Description.

Superglass Superwall 32 is a British Board of Agrément (BBA) approved, non-combustible glass mineral wool insulation cavity wall batt, manufactured with a water-repellent additive to resist moisture ingress. The flexible batt is supplied at 455mm wide to allow friction fitting between standard vertical wall tie spacings, reducing the need for on-site cutting and waste.

## Application.

Superglass Superwall 32 is designed to provide thermal insulation in full or partial fill in new external masonry cavity walls, up to 25 metres in height for full fill and without restriction for partial fill in buildings of a domestic and non-domestic nature. Additional requirements apply for buildings above 12 metres in height for full fill and above 25 metres in height for partial fill, please refer to the product BBA certificate for more information.

Superwall 32 is BBA approved for use in all UK exposure zones (subject to conditions detailed in the BBA Certificate).

## Performance.

### Thermal Conductivity:

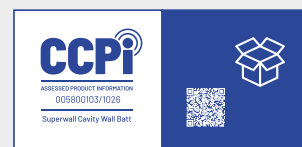
Declared thermal conductivity ( $\lambda$ ) value of 0.032W/mK.

### Fire Classification:

Deemed non-combustible with a fire classification of Euroclass A1 (the highest possible rating) when tested to BS EN 13501-1:2018 Reaction to Fire.



**Typical applications:**  
External masonry cavity walls.



Thermal  
Insulation



Non-  
combustible



Recycled  
Glass Content

intelligent environments  
**Superglass**  
by etex

[superglass.co.uk](http://superglass.co.uk)

# Superwall 32 Cavity Batt.

## Technical Characteristics.

### Product Specification.

Thickness (mm)	Length (mm)	Width (mm)	Batts per pack	Pack Area (m <sup>2</sup> )	Packs per pallet	Thermal Conductivity (W/mK)	Thermal Resistance (m <sup>2</sup> K/W)	Product Code
75	1200	455	8	4.368	30	0.032	2.30	2144313
85	1200	455	8	4.368	30	0.032	2.65	2144314
100	1200	455	6	3.276	30	0.032	3.10	2144315
125	1200	455	4	2.184	30	0.032	3.90	2144316
150	1200	455	4	2.184	30	0.032	4.65	2144449

Please note that all dimensions are nominal.

### Additional Information.

#### Vapour Resistivity.

The product has a nominal vapour resistivity of 5 MNs/gm.

#### Water Resistance.

Constructions incorporating the product and built in accordance with the Standards listed in section 4.4 of BBA Certificate 89/2231 Product Sheet 3, will resist the transfer of precipitation to the inner leaf and satisfy the national Building Regulations.

#### Below DPC level.

The product may be used in situations where it bridges the DPC in walls; dampness from the ground will not pass through to the inner leaf provided the wall is detailed in accordance with the requirements and provisions of the national Building Regulations. Please refer to product BBA certificate for more information.

#### Environmental Credentials.

- Our products and their pallets are wrapped in low-density polyethylene (LDPE4) plastic, which contains a minimum 30% recycled material and is fully recyclable. Before recycling, please consult your local authority for guidance.
- ISO 14001:2015 – Environmental Management Systems (EMS) certified. Certificate number: EMS 646508.
- Contains no ozone-depleting substances or greenhouse gases.
- Made from up to 84% recycled glass.
- Generic BRE Green Guide Rating of A+.

For more information, please refer to the Environmental Product Declaration (EPD).

#### Standards and Approvals.

Manufactured in accordance with:

- BS EN 13162:2012+A1:2015 Thermal insulation products for buildings – Factory made mineral wool (MW) products.
- BS EN 13172: 2012 Thermal insulation products – Evaluation of conformity.

- ISO 9001:2015 – Quality Management Systems (QMS). Certificate number: FM 02264.

#### Certifications.

- UKCA certified to BS EN 13162:2012+A1:2015. Certificate number: 0086 CPR 469699.
- CE marked to EN 13162:2012+A1:2015. Certificate number: 0751-CPR-399.0-01.
- BBA certified for full and partial fill applications. Certificate number: 89/2231.
- CCPI (Code for Construction Products Information) Assessment Mark. Certificate number: 005800103/1026.

A copy of the product Declaration of Performance (DoP) can be downloaded from the Superglass website.

#### EUCEB (European Certification Board of Mineral Wool Products).

All Superglass glass mineral wool products are made of non-classified fibres and are certified by EUCEB. EUCEB is a voluntary initiative by the mineral wool industry. It is an independent certification authority that guarantees that products are made of fibres which comply with the exonerated criteria for carcinogenicity (Note Q) of the Regulation (EC) 1272/2008. Certificate number: BEUC-511-27949-491-14462.

#### Handling & Storage.

The product should be stored properly and handled in such a way as to ensure that the product remains clean and undamaged.

The product is supplied compression packed in polythene to provide short term protection only. For long term protection, the product must be stored indoors, or under a waterproof covering and off the ground to protect from weather damage. The product should not be left permanently exposed to the elements.

All Superglass products are non-hygroscopic, will not rot, degrade, or sustain vermin and will not encourage the growth of mould, bacteria, or fungi.



Etex UK Insulation Limited | Thistle Industrial Estate | Kerse Road | Stirling | FK7 7QQ | UK

S3210  
November 2025

#### Technical

Hotline: 0808 1645 134

Email: [technical.stirling@etexgroup.com](mailto:technical.stirling@etexgroup.com)

#### Customer Services

Tel: 01786 451170

Email: [customerservice.stirling@etexgroup.com](mailto:customerservice.stirling@etexgroup.com)

#### Social

[superglass\\_uk](#)

[superglassuk/](#)

[superglassinsulationuk](#)