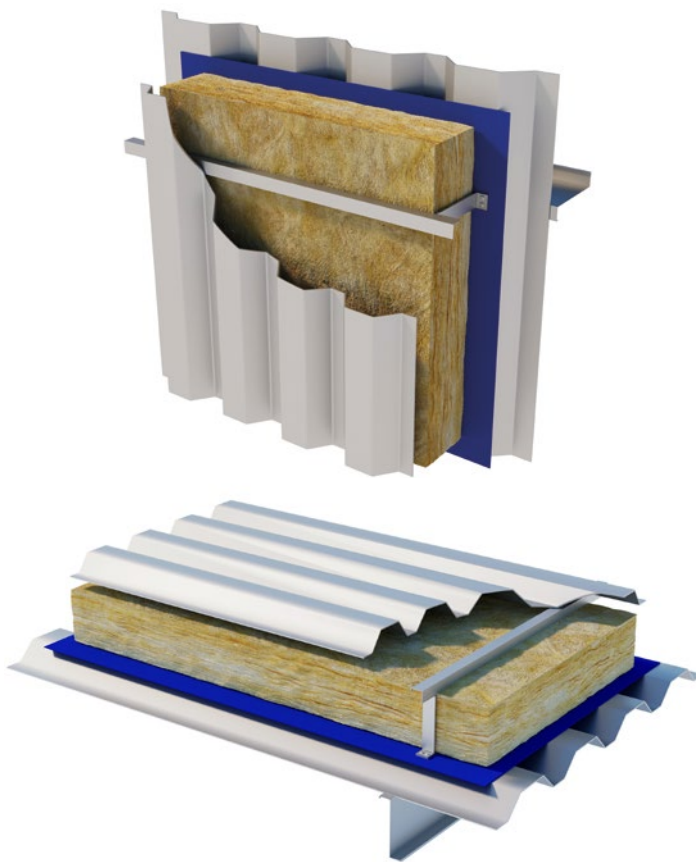


Cladding Mat 35.

August 2025 | Data Sheet



Description.

Superglass Cladding Mat 35 is a non-combustible glass mineral wool insulation roll. The roll is supplied 1200mm wide to suit commonly used rail and bracket systems.

Application.

Superglass Cladding Mat 35 is designed to provide thermal and acoustic insulation in the walls and roofs of twin skin profiled metal clad systems and portable & modular buildings.

Performance.

Thermal Conductivity:

Declared thermal conductivity (λ value) of 0.035W/mK.

Fire Classification:

Deemed non-combustible with a fire classification of Euroclass A1 (the highest possible rating) when tested to BS EN 13501-1:2018 Reaction to Fire.



Typical applications:

Twin skin profiled metal clad systems.



Thermal
Insulation



Non-
combustible



Recycled
Glass Content

intelligent environments
Superglass
by etex

superglass.co.uk

Cladding Mat 35.

Technical Characteristics.

Product Specification.

Thickness (mm)	Length (m)	Width (mm)	Pack Area (m²)	Packs per pallet	Thermal Conductivity (W/mK)	Thermal Resistance (m²K/W)	Product Code
60	9.60	1200	11.520	24	0.035	1.70	2144354
80	7.20	1200	8.640	24	0.035	2.25	2144355
90	6.30	1200	7.560	24	0.035	2.55	2144356
100	6.30	1200	7.560	24	0.035	2.85	2144431
120	5.00	1200	6.000	24	0.035	3.40	2144292
130	4.25	1200	5.100	24	0.035	3.70	2144613
140	4.00	1200	4.800	24	0.035	4.00	2144357
150	3.80	1200	4.560	24	0.035	4.25	2144358
160	3.60	1200	4.320	24	0.035	4.55	2144359
180	3.20	1200	3.840	24	0.035	5.10	2144360
200	2.90	1200	3.480	24	0.035	5.70	2144361

Please note that all dimensions are nominal.

Additional Information.

Vapour Resistivity.

The product has a nominal vapour resistivity of 5 MNs/gm.

Environmental Credentials.

- Our products and their pallets are wrapped in low-density polyethylene (LDPE4) plastic, which contains a minimum 30% recycled material and is fully recyclable. Before recycling, please consult your local authority for guidance.
- ISO 14001:2015 – Environmental Management Systems (EMS) certified. Certificate number: EMS 646508.
- Contains no ozone-depleting substances or greenhouse gases.
- Manufactured from up to 84% recycled glass.
- Generic BRE Green Guide Rating of A+.

For more information, please refer to the Environmental Product Declaration (EPD).

Standards and Approvals.

Manufactured in accordance with:

- BS EN 13162:2012+A1:2015 Thermal insulation products for buildings – Factory made mineral wool (MW) products.
- BS EN 13172: 2012 Thermal insulation products – Evaluation of conformity.
- ISO 9001:2015 – Quality Management Systems (QMS). Certificate number: FM 02264.

Certifications.

- UKCA certified to BS EN 13162:2012+A1:2015. Certificate number: 0086 CPR 469699.
- CE marked to EN 13162:2012+A1:2015. Certificate number: 0751-CPR-399.0-01.
- CCPI (Code for Construction Products Information) Assessment Mark. Certificate number: 005800128/0227.

A copy of the product Declaration of Performance (DoP) can be downloaded from the Superglass website.

EUCB (European Certification Board of Mineral Wool Products).

All Superglass glass mineral wool products are made of non-classified fibres and are certified by EUCB. EUCB is a voluntary initiative by the mineral wool industry. It is an independent certification authority that guarantees that products are made of fibres which comply with the exoneration criteria for carcinogenicity (Note Q) of the Regulation (EC) 1272/2008. Certificate number: BEUC-511-27949-491-14462.

Handling & Storage.

The product should be stored properly and handled in such a way as to ensure that the product remains clean and undamaged.

The product is supplied compression packed in polythene to provide short term protection only. For long term protection, the product must be stored indoors, or under a waterproof covering and off the ground to protect from weather damage. The product should not be left permanently exposed to the elements.

All Superglass products are non-hygroscopic, will not rot, degrade, or sustain vermin and will not encourage the growth of mould, bacteria, or fungi.



Etex UK Insulation Limited | Thistle Industrial Estate | Kerse Road | Stirling | FK7 7QQ | UK

CM3507
August 2025

Technical

Hotline: 0808 1645 134
Email: technical.stirling@etexgroup.com

Customer Services

Tel: 01786 451170
Email: customerservice.stirling@etexgroup.com

Social

✕ [superglass_uk](#) in [superglassuk/](#) f [superglassinsulationuk](#)