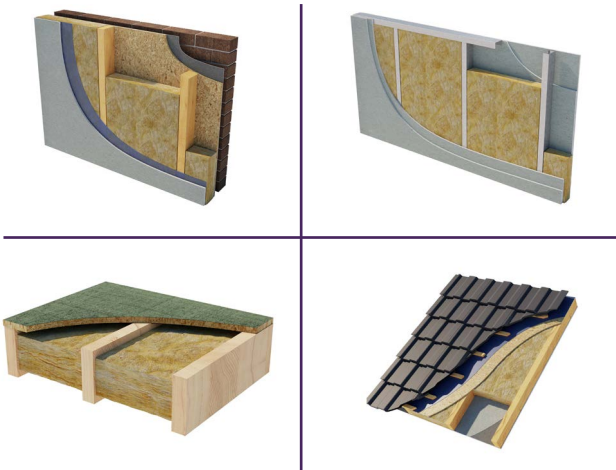


Adapt Slab 35.

March 2026 | Data Sheet

Typical Applications.



Description.

Superglass Adapt Slab 35 is a non-combustible glass mineral wool insulation slab. The flexible slab is supplied at 400mm & 600mm widths to allow friction fitting between common stud/joist spacings, minimising gaps at joints and reducing on-site cutting & waste.

Application.

Superglass Adapt Slab 35 is designed to provide both thermal and acoustic insulation for various applications, including:

- Light gauge steel framing systems (between studs only)
- Party & separating walls
- Internal partition walls
- External timber frame walls
- Internal & separating floors
- Suspended timber ground floors
- Warm pitched roofs.



Performance.

Thermal Conductivity:

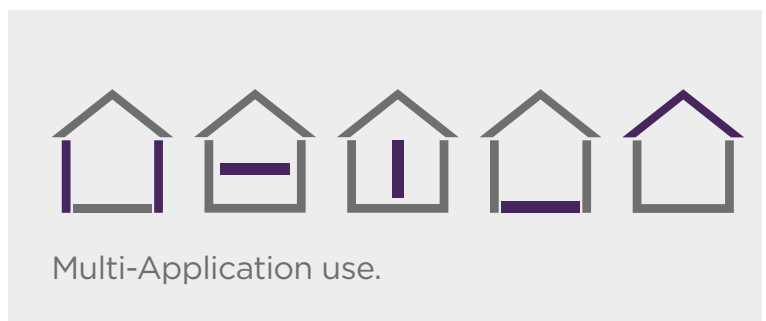
Declared thermal conductivity (lambda (λ) value) of 0.035W/mK.

Density:

Manufactured at a nominal density of 22kg/m³.

Fire Classification:

Deemed non-combustible with a fire classification of Euroclass A1 (the highest possible rating) when tested to EN 13501-1:2018 Reaction to Fire.



Acoustic
Insulation



Thermal
Insulation



Non-
combustible



Recycled
Glass Content

intelligent environments
Superglass
by etex

superglass.co.uk

Adapt Slab 35.

Technical Characteristics.

Product Specification.

Thickness (mm)	Length (mm)	Width (mm)	Slabs per pack	Pack Area (m ²)	Packs per pallet	Thermal Conductivity (W/mK)	Thermal Resistance (m ² K/W)	Product Code
50	1200	600	16	11.520	20	0.035	1.40	2144950
70	1200	600	12	8.640	20	0.035	2.00	2144961
90	1200	600	10	7.200	20	0.035	2.55	2144962
100	1200	600	8	5.760	20	0.035	2.85	2144963
140	1200	600	6	4.320	20	0.035	4.00	2144964
150	1200	600	6	4.320	20	0.035	4.25	2144965

Thickness (mm)	Length (mm)	Width (mm)	Slabs per pack	Pack Area (m ²)	Packs per pallet	Thermal Conductivity (W/mK)	Thermal Resistance (m ² K/W)	Product Code
70	1200	400	12	5.760	36	0.035	2.00	2145349
100	1200	400	8	3.840	36	0.035	2.85	2144966
140	1200	400	6	2.880	36	0.035	4.00	2144967

Please note that all dimensions are nominal.

Additional Information.

Vapour Resistivity.

The product has a nominal vapour resistivity of 5 MNs/gm.

Environmental Credentials.

- Our products and their pallets are wrapped in low-density polyethylene (LDPE4) plastic, which contains a minimum 30% recycled material and is fully recyclable. Before recycling, please consult your local authority for guidance.
- ISO 14001:2015 – Environmental Management Systems (EMS) certified. Certificate number: EMS 646508.
- Contains no ozone-depleting substances or greenhouse gases.
- Manufactured from up to 84% recycled glass.

Environmental Product Declarations (EPDs) for our products, detailing their overall environmental performance, are published and accessible on our website.

Standards and Approvals.

Manufactured in accordance with:

- BS EN 13162:2012+A1:2015 Thermal insulation products for buildings - Factory made mineral wool (MW) products.
- BS EN 13172: 2012 Thermal insulation products - Evaluation of conformity.
- ISO 9001:2015 - Quality Management Systems (QMS). Certificate number: FM 02264.

Certifications.

- UKCA certified to BS EN 13162:2012+A1:2015. Certificate number: 0086 CPR 469699.
- CE marked to EN 13162:2012+A1:2015. Certificate number: 0751-CPR-399.0-01.
- CCPI (Code for Construction Products Information) Assessment Mark. Certificate number: 005800130/0227.

EUCEB (European Certification Board of Mineral Wool Products).

All Superglass glass mineral wool products are made of non-classified fibres and are certified by EUCEB. EUCEB is a voluntary initiative by the mineral wool industry. It is an independent certification authority that guarantees that products are made of fibres which comply with the exoneration criteria for carcinogenicity (Note Q) of the Regulation (EC) 1272/2008. Certificate number: BEUC-511-27949-491-14462.

Handling & Storage.

The product must be stored and handled in a manner that ensures it remains clean and undamaged. It is supplied compression-packed in polythene, which provides short-term protection only. For long-term protection, store the product indoors or under a waterproof covering, raised off the ground, to prevent weather-related damage.

During construction, all exposed areas of the product must be covered at the end of each working day and during adverse weather conditions, including rain, wind, or snow. Use polythene sheeting or an equivalent protective cover to prevent water saturation. The product must not be left permanently exposed to the elements.

All Superglass products are non-hygroscopic, will not rot, degrade, or sustain vermin and will not encourage the growth of mould, bacteria, or fungi.



Etex UK Insulation Limited | Thistle Industrial Estate | Kerse Road | Stirling | FK7 7QQ | UK

ADD35008
March 2026

Technical

Hotline: 0808 1645 134
Email: technical.stirling@etexgroup.com

Customer Services

Tel: 01786 451170
Email: customerservice.stirling@etexgroup.com

Social

[superglass_uk](https://twitter.com/superglass_uk)
[superglassuk/](https://www.linkedin.com/company/superglassuk/)
[superglassinsulationuk](https://www.facebook.com/superglassinsulationuk)