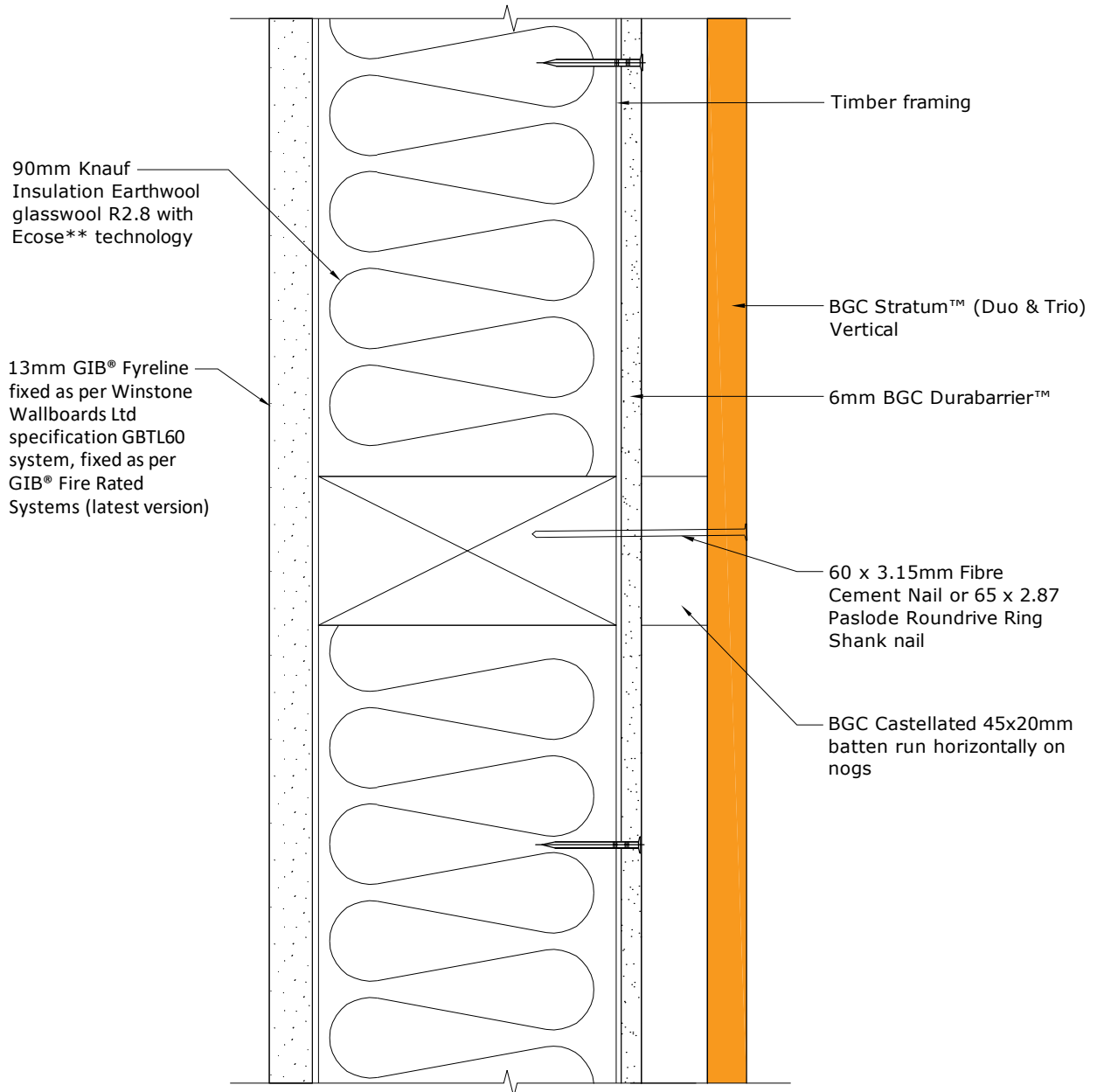


**BGC****Fibre Cement****Note:**

Timber Framing - Minimum 90mm x 45mm framing in accordance with NZS3604. Studs at maximum 600mm centres. Noggins at maximum 600 centres. Double or staggered studs may be used.

**Note:**

BGC Stratum™ Vertical must be fixed through the cavity batten to the framing when part of a 60 min FRR

BGC 60 min Fire Details are based on results from BRANZ Fire Test Report FR10189-001 and Fire Assessment FAR 10914-001

PROFILE

**BGC Stratum (Duo & Trio) Vertical**

DATE

**Feb 2019**

SCALE

**1:2 @ A4**

DETAIL

**60/60/60 Fire Rated Wall Detail  
(GIB® Fyreline) Cavity Construction**

DETAIL NO.

**FW-20e**