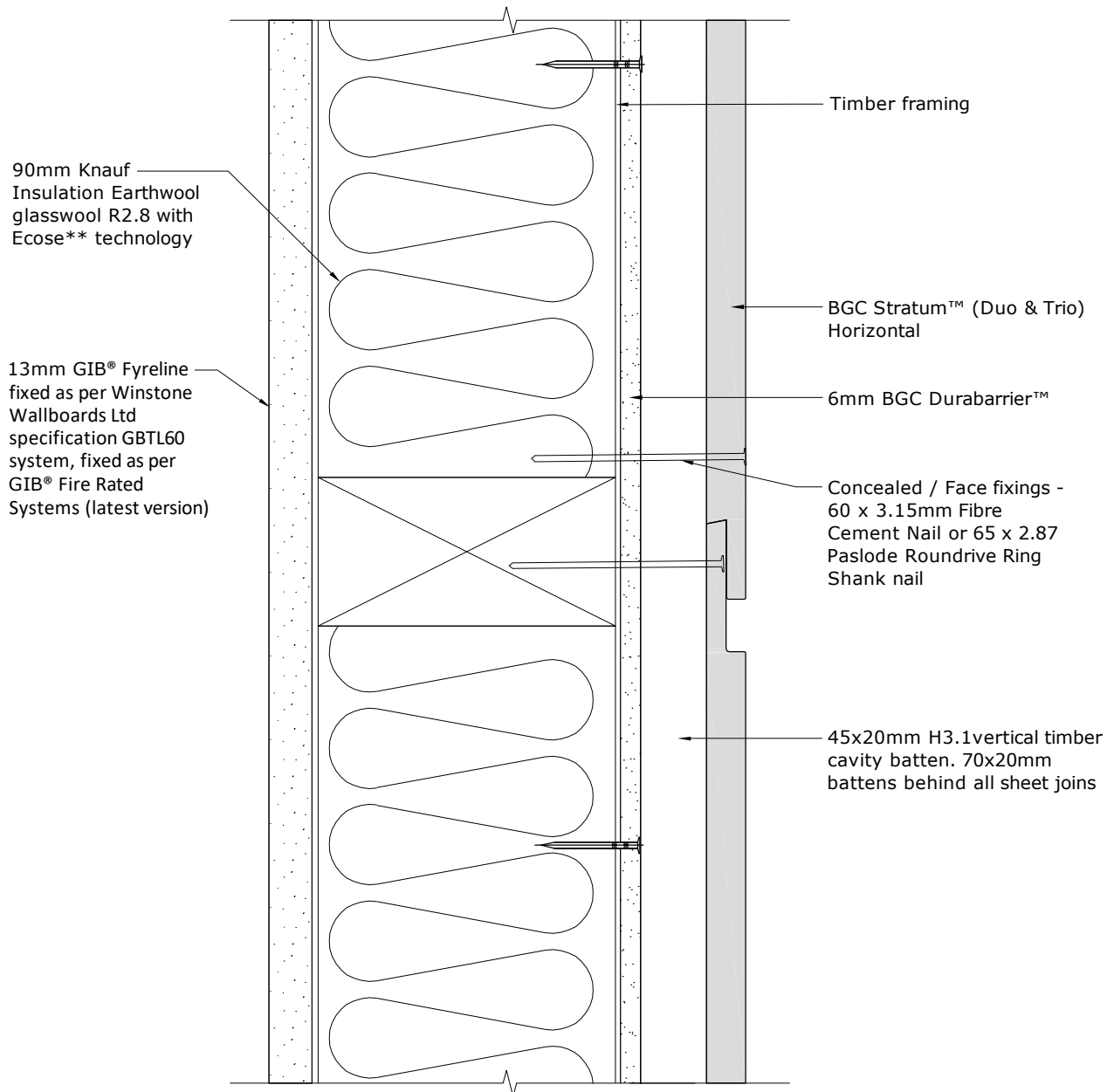


BGC**Fibre Cement****Note:**

Timber Framing - Minimum 90mm x 45mm framing in accordance with NZS3604. Studs at maximum 600mm centres. Noggins at maximum 800 centres. Double or staggered studs may be used.

Note:

BGC Stratum™ Horizontal must be fixed through the cavity batten to the framing when part of a 60 min FRR

BGC 60 min Fire Details are based on results from BRANZ Fire Test Report FR10189-001 and Fire Assessment FAR 10914-001

PROFILE **BGC Stratum (Duo & Trio) Horizontal**

DETAIL **60/60/60 Fire Rated Wall Detail
(GIB® Fyreline) Cavity Construction**

DATE **Feb 2019**

SCALE **1:2 @ A4**

DETAIL NO. **FW-20d**