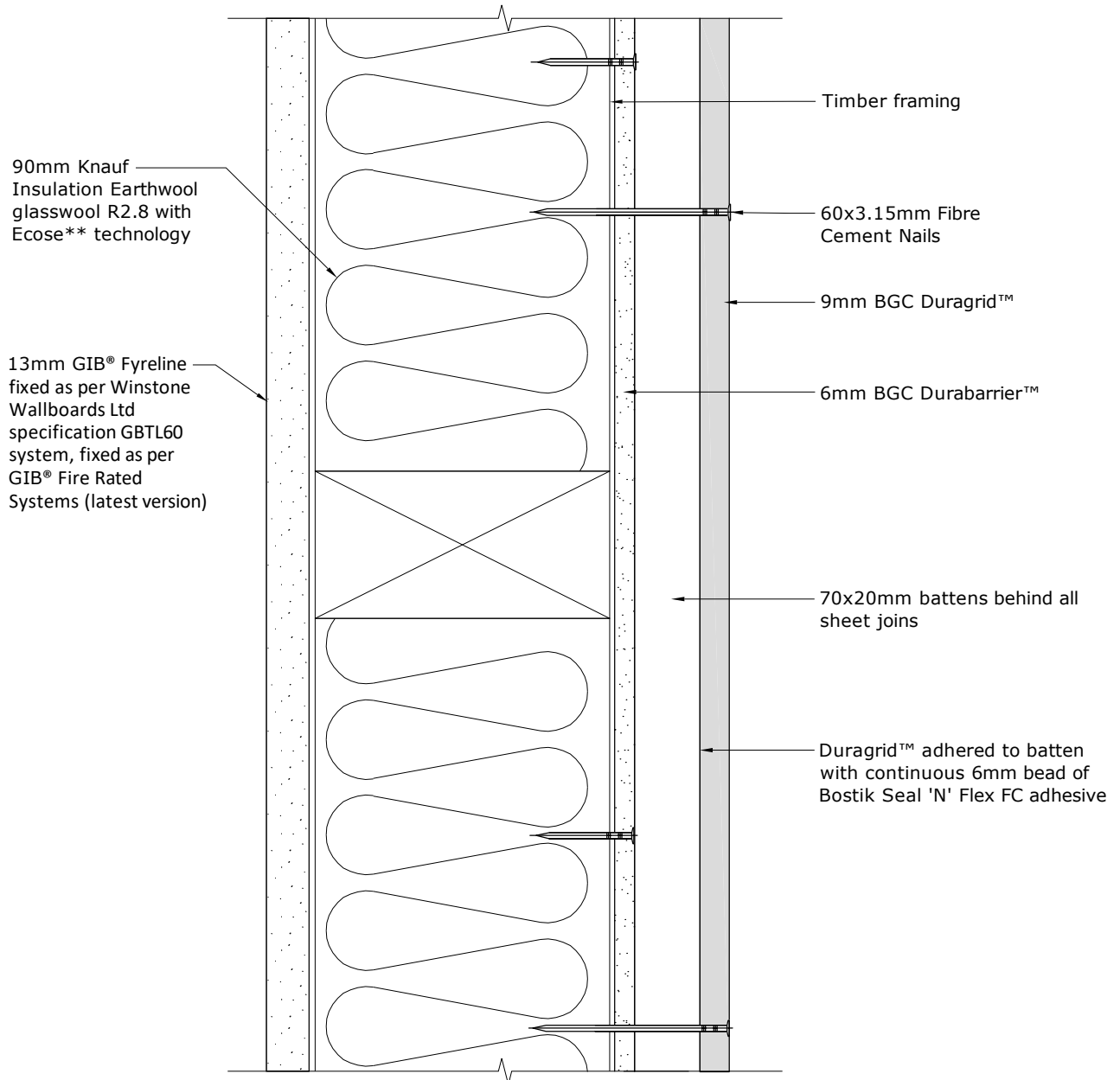


BGC**Fibre Cement****Note:**

Timber Framing - Minimum 90mm x 45mm framing in accordance with NZS3604. Studs at maximum 600mm centres. Noggins at maximum 800 centres. Double or staggered studs may be used.

Note:

BGC Aluminium Backing Strips must be used both horizontally and Vertically when part of a 60min FRR

BGC Duragrid™ must be fixed through the cavity batten to the framing when part of a 60 min FRR

BGC 60 min Fire Details are based on results from BRANZ Fire Test Report FR10189-001 and Fire Assessment FAR 10914-001

PROFILE

BGC Duragrid

DATE

Feb 2019

SCALE

1:2 @ A4

DETAIL

**60/60/60 Fire Rated Wall Detail
(GIB® Fyreline) Cavity Construction**

DETAIL NO.

FW-20c