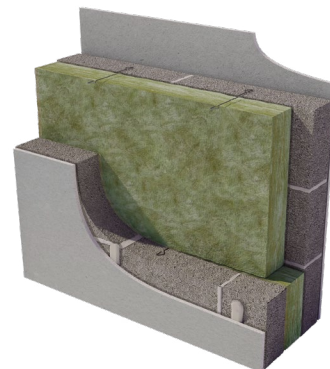


URSA PARTY WALL ROLL



Typical applications:

Masonry party/ separating walls.



Description.

URSA PARTY WALL ROLL is a non-combustible glass mineral wool insulation roll. The flexible roll is cut at 2x455mm widths to fit between standard wall ties, reducing the need for on-site cutting and waste.



Non-combustible



Thermal Insulation



Acoustic Insulation



Recycled Glass Content

Application.

URSA PARTY WALL ROLL is designed to provide thermal and acoustic insulation within masonry party/separating walls.

URSA PARTY WALL ROLL may be used as a component in several Robust Details Solutions. It may also be used in party wall systems which require on-site pre completion. The product can be used as part of a full fill solution to achieve a zero effective U-value.

Performance.

Thermal Conductivity:

Declared thermal conductivity (λ) value of 0.035 W/mK.

Density:

Manufactured at a nominal density of 22 kg/m³.

Fire Classification:

Deemed non-combustible with a fire classification of Euroclass A1 (the highest possible rating) when tested to EN 13501-1:2018 Reaction to Fire.

Technical Characteristics.

Product Specification.

Thickness (mm)	Length (mm)	Width (mm)	Pack Area (m²)	Packs per pallet	Pallet Area (m²)	Thermal Conductivity (W/mK)	Thermal Resistance (m²K/W)	Product Code
100	6000	2x455	5.46	18	98.28	0.035	2.85	2141341

Please note that all dimensions are nominal.

Additional Information.

CCPI (Code for Construction Products Information).

Holds CCPI Assessment Mark.
Certificate number: 005800185/1027.

Vapour Resistivity.

The product has a nominal vapour resistivity of 5 MNs/gm.

Environmental Credentials.

- The primary packaging on our products (rolls and slabs) and pallets (the shrink hood) are wrapped in low-density polyethylene (LDPE4) plastic, which contains a minimum 30% recycled material and is fully recyclable. The secondary packaging on our products (grouping rolls and slabs into modules of 3-6 packs) is low-density polyethylene (LDPE4) virgin plastic. Before recycling, please consult your local authority for guidance.
- ISO 14001:2015 – Environmental Management Systems (EMS) certified. Certificate number: BQA_EMS_C_2016673.
- Contains no ozone-depleting substances or greenhouse gases.
- Manufactured from up to 73% recycled glass.
- Generic BRE Green Guide Rating of A+.

Standards and Approvals.

Manufactured in accordance with:

- EN 13162:2012+A1:2015 Thermal insulation products for buildings – Factory made mineral wool (MW) products.
- EN 13172: 2012 Thermal insulation products – Evaluation of conformity.
- ISO 9001:2015 – Quality Management Systems (QMS). Certificate number: 01 100 1300949.

Certification.

- CE marked to EN 13162:2012+A1:2015. Certificate number: 1163-CPR-0051.

EUCEB (European Certification Board of Mineral Wool Products).

All URSA glass mineral wool products are made of non-classified fibres and are certified by EUCEB. EUCEB is a voluntary initiative by the mineral wool industry. It is an independent certification authority that guarantees that products are made of fibres which comply with the exoneration criteria for carcinogenicity (Note Q) of the Regulation (EC) 1272/2008.
Certificate number: BEUC-511-46-376-46.

Handling & Storage.

The product should be stored properly and handled in such a way as to ensure that the product remains clean and undamaged.

The product is supplied compression packed in polythene to provide short term protection only. For long term protection, the product must be stored indoors, or under a waterproof covering and off the ground to protect from weather damage. The product should not be left permanently exposed to the elements.

All URSA products are non-hygroscopic, will not rot, degrade, or sustain vermin and will not encourage the growth of mould, bacteria, or fungi.

URSA TERRA.

Developed in 2009, URSA TERRA showcases the latest in glass mineral wool technology. Our distinctive production methods and product formulation define the character of our extensive insulation product range.

Suitable for use in **robustdetails®** masonry party walls

URSA PARTY WALL ROLL can be used in the following Robust Details specifications:

Robust Detail	Block Type & Density (kg/m3)	Parge Coat Required	Wall Finish
E-WM-1	Dense Aggregate - 1850 to 2300	No	Wet Plaster
E-WM-2	Lightweight Aggregate - 1350 to 1600	No	Wet Plaster
E-WM-3	Dense Aggregate - 1850 to 2300	Yes	Render and gypsum-based board on dabs
E-WM-4	Lightweight Aggregate - 1350 to 1600	Yes	Render and gypsum-based board on dabs
E-WM-5	Besblock 'Star Performer' - 1528	Yes	Render and gypsum-based board on dabs
E-WM-6	Aircrete - 600 to 800	Yes	Render and gypsum-based board on dabs
E-WM-10	Aircrete - Thin Joint System - 600 to 800	Yes	Render and gypsum-based board on dabs
E-WM-11	Lightweight Aggregate - 1350 to 1600	Yes	Render and gypsum-based board on dabs
E-WM-12	Plasmor 'Aglite Ultima' - 1050	Yes	Render and gypsum-based board on dabs
E-WM-13	Aircrete - Thin Joint Untied System - 600 to 800	Yes	Render and gypsum-based board on dabs
E-WM-16	Dense Aggregate - 1850 to 2300	Yes	Render and gypsum-based board on dabs
E-WM-18	Dense Aggregate - 1850 to 2300	No	Wet Plaster
E-WM-19	"Dense or Lightweight Aggregate - 1350 to 1600 or 1850 to 2300"	Yes	Render and gypsum-based board on dabs
E-WM-21	Lightweight Aggregate - 1350 to 1600	No	Wet Plaster
E-WM-26	Besblock 'Star Performer' - 1528	No	Gypsum-based board on dabs
E-WM-29	Porotherm - Thin Joint - n/a	Yes	Ecoparge gypsum-based board on dabs
E-WM-31	H+H Celcon Elements - thin joint - 575	No	Gypsum-based board on dabs
E-WM-34	Plasmor 'Aglite Ultima' - 1050	No	Gypsum-based board on dabs

The requirements of the Robust Details Handbook should be strictly followed.

U-Values Achieved When Fully Filling The Party/Separating Wall Cavity

U-Value (W/m²K)	Party Wall Construction
0.0	Solid
0.5	Unfilled cavity with no effective edge sealing
0.2	Unfilled cavity with effective edge sealing around al exposed edges and in line with insulation layers in abutting elements
0.0*	Fully filled cavity and with effective edge sealing around all exposed edges and in line with insulation layers in abutting elements

* By either building a solid wall or fully filling a party wall cavity with mineral wool insulation results in a U-Value of 0.0W/m²k, i.e. zero heat loss.



NBS Source
PARTNER

Etex UK Insulation Limited. Thistle Industrial Estate, Kerse Road, Stirling, Scotland FK7 7QQ [ursa-uk.co.uk](https://www.ursa-uk.co.uk)

Technical: T. 0808 1645 134 | E. technicalursa.uk@etexgroup.com | Customer Services: T. 01786 451170 | E. customerservice.stirling@etexgroup.com