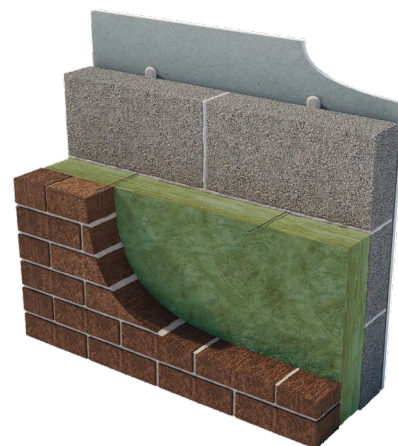


URSA CAVITY BATT 32



Typical applications:

External masonry cavity walls.



Description.

URSA CAVITY BATT 32 is a British Board of Agrément (BBA) approved, non-combustible glass mineral wool insulation cavity wall batt, manufactured with a water-repellent additive to resist moisture ingress. The flexible batt is supplied at 455mm wide to allow friction fitting between standard vertical wall tie spacings, reducing the need for on-site cutting and waste.



Non-combustible



Thermal Insulation



Recycled Glass Content

Application.

URSA CAVITY BATT 32 is designed to provide thermal insulation in full or partial fill in new external masonry cavity walls, up to 25 metres in height for full fill and without restriction for partial fill in buildings of a domestic and non-domestic nature. Additional requirements apply for buildings above 12 metres in height for full fill and above 25 metres in height for partial fill, please refer to the product BBA certificate for more information.

URSA CAVITY BATT 32 is BBA approved for use in all UK exposure zones (subject to conditions detailed in the BBA Certificate).

The product may also be used in masonry party/separating walls.

Performance.

Thermal Conductivity:

Declared thermal conductivity (lambda (λ) value) of 0.032 W/mK.

Density:

Manufactured at a nominal density of 32 kg/m³.

Fire Classification:

Deemed non-combustible with a fire classification of Euroclass A1 (the highest possible rating) when tested to EN 13501-1:2018 Reaction to Fire.



Technical Characteristics.

Product Specification.

Thickness (mm)	Length (mm)	Width (mm)	Batts per pack	Pack Area (m ²)	Packs per pallet	Pallet Area (m ²)	Thermal Conductivity (W/mK)	Thermal Resistance (m ² K/W)	Product Code
75	1350	455	7	4.30	25	107.49	0.032	2.30	2143381
85	1350	455	6	3.69	25	92.14	0.032	2.65	2143382
100	1350	455	5	3.07	25	76.78	0.032	3.10	2143383
125	1350	455	4	2.46	25	61.43	0.032	3.90	2143328
150	1350	455	4	2.46	20	49.14	0.032	4.65	2143384
175	1350	455	3	1.84	25	46.07	0.032	5.45	2143411
200	1350	455	3	1.84	20	36.86	0.032	6.25	2143412

Please note that all dimensions are nominal.

Additional Information.

CCPI (Code for Construction Products Information).

Holds CCPI Assessment Mark.
Certificate number: 005800185/1027.

Vapour Resistivity.

The product has a nominal vapour resistivity of 5 MNs/gm.

Water Resistance.

Constructions incorporating the product and built in accordance with the Standards listed in BBA Certificate 25/7449 will resist the transfer of precipitation to the inner leaf and satisfy the national Building Regulations.

Below DPC level.

The product may be used in situations where it bridges the DPC in walls; dampness from the ground will not pass through to the inner leaf provided the wall is detailed in accordance with the requirements and provisions of the national Building Regulations. Please refer to product BBA certificate for more information

Environmental Credentials.

- The primary packaging on our products (rolls and slabs) and pallets (the shrink hood) are wrapped in low-density polyethylene (LDPE4) plastic, which contains a minimum 30% recycled material and is fully recyclable. The secondary packaging on our products (grouping rolls and slabs into modules of 3-6 packs) is low-density polyethylene (LDPE4) virgin plastic. Before recycling, please consult your local authority for guidance.
- ISO 14001:2015+A1:2024 - Environmental Management Systems (EMS) certified. Certificate number: BQA_EMS_C_2016673.
- Contains no ozone-depleting substances or greenhouse gases.
- Manufactured from up to 73% recycled glass.
- Environmental Product Declarations (EPDs) for our products, detailing their overall environmental performance, are published and accessible on our website.

Standards and Approvals.

Manufactured in accordance with:

- EN 13162:2012+A1:2015 Thermal insulation products for buildings - Factory made mineral wool (MW) products.
- EN 13172: 2012 Thermal insulation products - Evaluation of conformity.
- ISO 9001:2015 - Quality Management Systems (QMS). Certificate number: 01 100 1300949.

Certification.

- CE marked to EN 13162:2012+A1:2015. Certificate number: 1163-CPR-0051.
- BBA certified for full and partial fill applications. Certificate number: 25/7449.

EUCEB (European Certification Board of Mineral Wool Products).

All URSA glass mineral wool products are made of non-classified fibres and are certified by EUCEB. EUCEB is a voluntary initiative by the mineral wool industry. It is an independent certification authority that guarantees that products are made of fibres which comply with the exoneration criteria for carcinogenicity (Note Q) of the Regulation (EC) 1272/2008.

Certificate number: BEUC-511-46-376-46.

Handling & Storage.

The product must be stored and handled in a manner that ensures it remains clean and undamaged. It is supplied compression-packed in polythene, which provides short-term protection only. For long-term protection, store the product indoors or under a waterproof covering, raised off the ground, to prevent weather-related damage.

During construction, all exposed areas of the product must be covered at the end of each working day and during adverse weather conditions, including rain, wind, or snow. Use polythene sheeting or an equivalent protective cover to prevent water saturation. The product must not be left permanently exposed to the elements.

All URSA products are non-hygroscopic, will not rot, degrade, or sustain vermin and will not encourage the growth of mould, bacteria, or fungi.

URSA TERRA.

Developed in 2009, URSA TERRA showcases the latest in glass mineral wool technology. Our distinctive production methods and product formulation define the character of our extensive insulation product range.



Etex UK Insulation Limited. Thistle Industrial Estate, Kerse Road, Stirling, Scotland FK7 7QQ ursa-uk.co.uk

Technical: T. 0808 1645 134 | E. technicalursa.uk@etexgroup.com | Customer Services: T. 01786 451170 | E. customerservice.stirling@etexgroup.com