

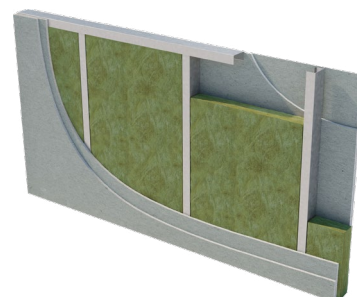
# URSA ACOUSTIC ROLL



**Typical applications:**



Internal walls and floors.



## Description.

URSA ACOUSTIC ROLL is a non-combustible glass mineral wool insulation roll. The roll is supplied at 1200mm & 2x600mm widths to allow friction fitting between common stud/joist spacings, minimising gaps at joints and reducing on-site cutting & waste.



Non-combustible



Thermal Insulation



Acoustic Insulation



Recycled Glass Content

## Application.

URSA ACOUSTIC ROLL is designed to provide both thermal and acoustic insulation for various applications, including:

- Internal walls and floors
- Timber frame party walls
- Timber and metal stud partitions
- Separating walls and floors
- Drylining systems

## Performance.

### Thermal Conductivity:

Declared thermal conductivity ( $\lambda$  value) of 0.035 W/mK.

### Density:

Manufactured at a nominal density of 22 kg/m<sup>3</sup>.

### Fire Classification:

Deemed non-combustible with a fire classification of Euroclass A1 (the highest possible rating) when tested to EN 13501-1:2018 Reaction to Fire.



# Technical Characteristics.

## Product Specification.

Thickness (mm)	Length (mm)	Width (mm)	Pack Area (m²)	Packs per pallet	Pallet Area (m²)	Thermal Conductivity (W/mK)	Thermal Resistance (m²K/W)	Product Code
25	20000	2x600	24.00	24	576.00	0.035	0.70	2138181
25	20000	1200	24.00	24	576.00	0.035	0.70	2138160
50	12000	2x600	14.40	24	345.60	0.035	1.40	2138183
60	10000	2x600	12.00	24	288.00	0.035	1.70	2138182
75	8000	2x600	9.60	24	230.40	0.035	2.10	2138184
100	6000	2x600	7.20	24	172.80	0.035	2.85	2138185

Please note that all dimensions are nominal.

## Additional Information.

### CCPI (Code for Construction Products Information).

Holds CCPI Assessment Mark.  
Certificate number: 005800185/1027.

### Vapour Resistivity.

The product has a nominal vapour resistivity of 5 MNs/gm.

### Environmental Credentials.

- The primary packaging on our products (rolls and slabs) and pallets (the shrink hood) are wrapped in low-density polyethylene (LDPE4) plastic, which contains a minimum 30% recycled material and is fully recyclable. The secondary packaging on our products (grouping rolls and slabs into modules of 3-6 packs) is low-density polyethylene (LDPE4) virgin plastic. Before recycling, please consult your local authority for guidance.
- ISO 14001:2015 – Environmental Management Systems (EMS) certified. Certificate number: BQA\_EMS\_C\_2016673.
- Contains no ozone-depleting substances or greenhouse gases.
- Manufactured from up to 73% recycled glass.
- Generic BRE Green Guide Rating of A+.

### Standards and Approvals.

Manufactured in accordance with:

- EN 13162:2012+A1:2015 Thermal insulation products for buildings – Factory made mineral wool (MW) products.
- EN 13172: 2012 Thermal insulation products – Evaluation of conformity.
- ISO 9001:2015 – Quality Management Systems (QMS).  
Certificate number: Q1 100 1300949.

### Certification.

- CE marked to EN 13162:2012+A1:2015.  
Certificate number: 1163-CPR-0051.

### EUCEB (European Certification Board of Mineral Wool Products).

All URSA glass mineral wool products are made of non-classified fibres and are certified by EUCEB. EUCEB is a voluntary initiative by the mineral wool industry. It is an independent certification authority that guarantees that products are made of fibres which comply with the exoneration criteria for carcinogenicity (Note Q) of the Regulation (EC) 1272/2008.  
Certificate number: BEUC-511-46-376-46.

### Handling & Storage.

The product should be stored properly and handled in such a way as to ensure that the product remains clean and undamaged.

The product is supplied compression packed in polythene to provide short term protection only. For long term protection, the product must be stored indoors, or under a waterproof covering and off the ground to protect from weather damage. The product should not be left permanently exposed to the elements.

All URSA products are non-hygroscopic, will not rot, degrade, or sustain vermin and will not encourage the growth of mould, bacteria, or fungi.

### URSA TERRA.

Developed in 2009, URSA TERRA showcases the latest in glass mineral wool technology. Our distinctive production methods and product formulation define the character of our extensive insulation product range.



Etex UK Insulation Limited. Thistle Industrial Estate, Kerse Road, Stirling, Scotland FK7 7QQ [ursa-uk.co.uk](http://ursa-uk.co.uk)

Technical: T. 0808 1645 134 | E. [technicalursa.uk@etexgroup.com](mailto:technicalursa.uk@etexgroup.com) | Customer Services: T. 01786 451170 | E. [customerservice.stirling@etexgroup.com](mailto:customerservice.stirling@etexgroup.com)