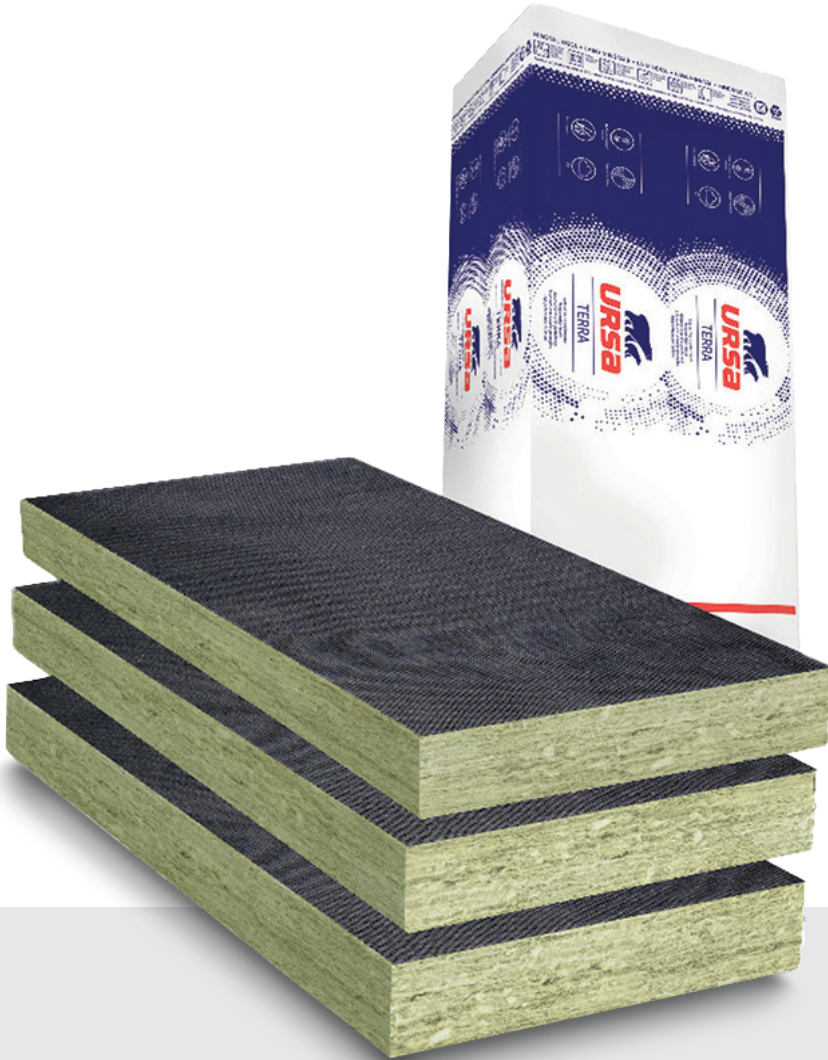


# URSAPAN BLACK



## Description.

URSAPAN BLACK is a non-combustible British Board of Agrément (BBA) approved glass mineral wool insulation slab.

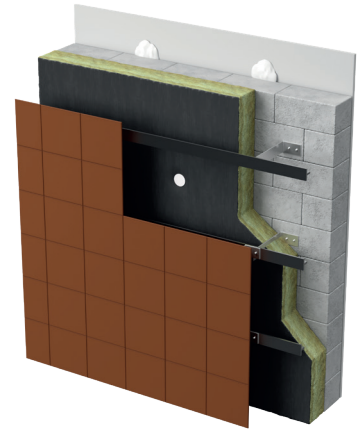
It is treated with a silicone-based water repellent and features a black glass fibre tissue facing on one side which is applied during the manufacturing process.

The black tissue facing provides an aesthetic solution, allowing the product to be used behind open joint cladding without being visible.



## Typical applications:

New build and refurbishment rainscreen cladding.



## Application.

URSAPAN BLACK is used as thermal and acoustic insulation on timber frame, steel frame or masonry backgrounds with ventilated rainscreen façade systems or a masonry outer leaf. In ventilated façade systems it can be used on buildings of any height; with a masonry outer leaf buildings above 25m are subject to additional design guidance (see BBA Certificate). It is suitable for both new and existing domestic and non-domestic buildings. Additionally, it can be used as soffit insulation.

Please refer to the Design & Installation Guides for more information.

## Performance.

### Thermal Conductivity:

Declared thermal conductivity (lambda ( $\lambda$ ) value) of 0.035 W/mK.

### Density:

Manufactured at a nominal density of 22 kg/m<sup>3</sup>.

### Fire Classification:

Deemed non-combustible with a fire classification of Euroclass A1 (the highest possible rating) when tested to EN 13501-1:2018 Reaction to Fire.



Non-combustible



Thermal Insulation



Recycled Glass Content



# Technical Characteristics.

## Product Specification.

Thickness (mm)	Length (mm)	Width (mm)	Slabs per pack	Pack Area (m <sup>2</sup> )	Packs per pallet	Pallet Area (m <sup>2</sup> )	Thermal Conductivity (W/mK)	Thermal Resistance (m <sup>2</sup> K/W)	Product Code
90	1350	600	7	5.67	24	136.08	0.035	2.55	2144903
100	1350	600	7	5.67	20	113.40	0.035	2.85	2143735
120	1350	600	5	4.05	24	97.20	0.035	3.40	2143736
130	1350	600	5	4.05	24	97.20	0.035	3.70	2144474
140	1350	600	5	4.05	20	81.00	0.035	4.00	2143738
150	1350	600	5	4.05	20	81.00	0.035	4.25	2143739
160	1350	600	4	3.24	24	77.76	0.035	4.55	2143740
180	1350	600	4	3.24	20	64.80	0.035	5.10	2143741
200	1350	600	3	2.43	24	58.32	0.035	5.70	2143742
220	1350	600	3	2.43	24	58.32	0.035	6.25	2143743
240	1350	600	3	2.43	20	48.60	0.035	6.85	2143744

Please note that all dimensions are nominal.

## Additional Information.

### CCPI (Code for Construction Products Information)

Holds CCPI Assessment Mark.  
Certificate number: 005800174/0727.

### Vapour Resistivity.

The product has a nominal vapour resistivity of 5 MNs/gm.

### Durability.

URSA has undertaken both in-house and independent testing to assess the durability of URSAPAN BLACK against wind driven rain and high winds. This involved leaving the slabs exposed on a test wall for several months and testing to EN 12865:2001. This test assesses external wall systems resistance to driving rain under pulsating air pressure; it is intended for the complete wall system so is very onerous onto the insulation alone. Wind speeds up to 31 m/s (70mph) did not damage the slabs and rain at a pressure of 1200 Pa gave surface wetting only and did not result in water penetration through the slabs.

All URSA products are non-hygroscopic, will not rot, degrade, or sustain vermin and will not encourage the growth of mould, bacteria, or fungi.

### Environmental Credentials.

- The primary packaging on our products (rolls and slabs) and pallets (the shrink hood) are wrapped in low-density polyethylene (LDPE4) plastic, which contains a minimum 30% recycled material and is fully recyclable. The secondary packaging on our products (grouping rolls and slabs into modules of 3-6 packs) is low-density polyethylene (LDPE4) virgin plastic. Before recycling, please consult your local authority for guidance.
- ISO 14001:2015 - Environmental Management Systems (EMS) certified. Certificate number: BQA\_EMS\_C\_2016673.
- Contains no ozone-depleting substances or greenhouse gases.
- Manufactured from up to 73% recycled glass.
- Generic BRE Green Guide Rating of A+.

### Standards and Approvals.

Manufactured in accordance with:

- EN 13162:2012+A1:2015 Thermal insulation products for buildings - Factory made mineral wool (MW) products.
- EN 13172: 2012 Thermal insulation products - Evaluation of conformity.
- ISO 9001:2015 - Quality Management Systems (QMS). Certificate number: 01 100 1300949.

### Certification.

- CE Marked to EN 13162:2012+A1:2015. Certificate number: 1163-CPR-0041.
- British Board of Agrément (BBA) certified for use behind rainscreen and masonry cladding. Certificate number: 20/5832.

### EUCEB

#### (European Certification Board of Mineral Wool Products)

All URSA glass mineral wool products are made of non-classified fibres and are certified by EUCEB. EUCEB is a voluntary initiative by the mineral wool industry. It is an independent certification authority that guarantees that products are made of fibres which comply with the exoneration criteria for carcinogenicity (Note Q) of the Regulation (EC) 1272/2008.

Certificate number: BEUC-511-46-376-46.

### Handling & Storage.

The product should be stored properly and handled in such a way as to ensure that the product remains clean and undamaged.

The product is supplied compression packed in polythene to provide short term protection only. For long term protection, the product must be stored indoors, or under a waterproof covering and off the ground to protect from weather damage. The product should not be left permanently exposed to the elements.

### URSA TERRA.

Developed in 2009, URSA TERRA showcases the latest in glass mineral wool technology. Our distinctive production methods and product formulation define the character of our extensive insulation product range.



Etex UK Insulation Limited. Thistle Industrial Estate, Kerse Road, Stirling, Scotland FK7 7QQ [ursa-uk.co.uk](http://ursa-uk.co.uk)

Technical: T. 0808 1645 134 | E. [technicalursa.uk@etexgroup.com](mailto:technicalursa.uk@etexgroup.com) | Customer Services: T. 01786 451170 | E. [customerservice.stirling@etexgroup.com](mailto:customerservice.stirling@etexgroup.com)