

Single Sided Access Guidance Note

Introduction

Technical guidance notes serve to validate and elaborate on the proven fire stop systems offered by FSi Limited. These notes offer valuable advice to specifiers, designers, and installers, focusing on specific applications, configurations, and aspects relating to fire stopping systems and materials. The document provides guidance on practical and effective recommendations, aiding in the selection criteria for a project. Furthermore, this insightful advice is instrumental for building owners and individuals responsible for the maintenance and installation of fire stop systems.

The purpose of this document is to address the specific scenarios within projects, wherein the installation of the Stopseal Batt system is constrained to a single side of the substrate. Typically, fire stopping systems and details necessitate a symmetrical installation, requiring access from both sides of the substrate.

FSi Promat Guidance

The fundamental requirement for installing the Stopseal Batt system is to ensure a comprehensive seal on both sides, which is achieved through the application of Pyrocoustic Sealant to all joints, cuts, and edges, with an additional bead of sealant applied to the perimeter of the seal. In situations where access is limited, a viable solution involves installing an extra layer of Stopseal Batt from the accessible side of the substrate. This supplementary layer will serve as a sacrificial element and should be generously coated with Pyrocoustic Sealant on all cuts, joints, edges and the face of the seal. Please see Annexure A at the bottom of this guidance document for a visual representation.

It would be the opinion of FSi that adopting a single-sided application approach to our fire stopping systems, by including a sacrificial layer of Stopseal Batt, would meet the specified fire resistance levels as outlined in the relevant third-party certification, if the seal was tested according to the BS EN 1366-3 test standard for service penetrations.

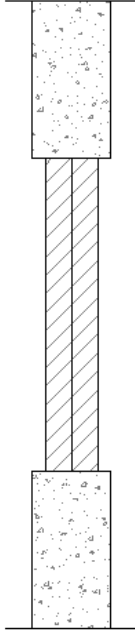
Guidance Notes

The Best Practice in Design and Installation document for the Firestopping of Service Penetrations created by a collaboration of BESA and ASFP identifies the issues relating to remedial works and single sided applications. They identify that where a single batt is required for the fire performance of a system, a double layer may be installed.

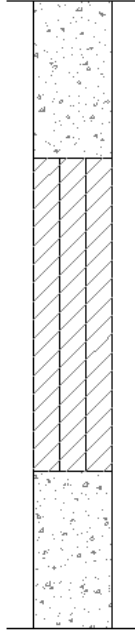
[Firestopping of Service Penetrations - FIS \(thefis.org\)](https://www.thefis.org)

Annexure A

Tested Installed from both sides



Single sided Installation



Single sided Installation

