

Technical Details

Supporting Test Data: WF 517975

Test Standard: EN 1366-3

Fire Resistance Performance:

110mm PVC BY 4.8mm WT	EBD
-----------------------	-----

Supporting Construction:

Flexible Floors $\geq 255\text{mm}$ - *The supporting construction must meet the fire resistance requirement of the proposed firestopping detail. Supporting construction must be installed and apertures formed in line with manufacturer's guidance*

Service Supports:

$\leq 400\text{mm}$
Service supports must be appropriately fire resistant Installed to the unexposed face of the substrate . (Top Side)

Installation:

FSi Ltd. recommend installation of FSi Ltd. products is carried out by 3rd party certified installers.

The substrate must be clean, dry, sound and homogeneous, free from oils, grease, dust and loose particles.

Adequate space and accessibility should be provided for applying and tooling the boards and sealant.

Measure the size of the opening and cut the Stopseal Batt to the correct size allowing an additional 100mm to all four sides .

Using a trowel or pallet knife apply a thick layer of Pyrocoastic Sealant to all areas of contact around the opening prior to installing the Stopseal Batt. Apply a similar thickness of Pyrocoastic Sealant to the cut Stopseal Batt and around the services.

Push/Fix the Stopseal Batt into place and seal with Pyrocoastic Sealant, ensuring no gaps are present.

Utilise steel toggle fixings 6 mm minimum diameter installing one to the corner of each cut section of Stopseal batt .

Open Pipebloc PCP and wrap around the service, close the Pipebloc PCP firmly and push against Batt. Fix Pipebloc PCP using Steel pigtail screws .

Competence records should be kept for all Individuals in

Penetration Service Details:

See 'Fire resistance table' above

Minimum Separation Between Penetration Services:

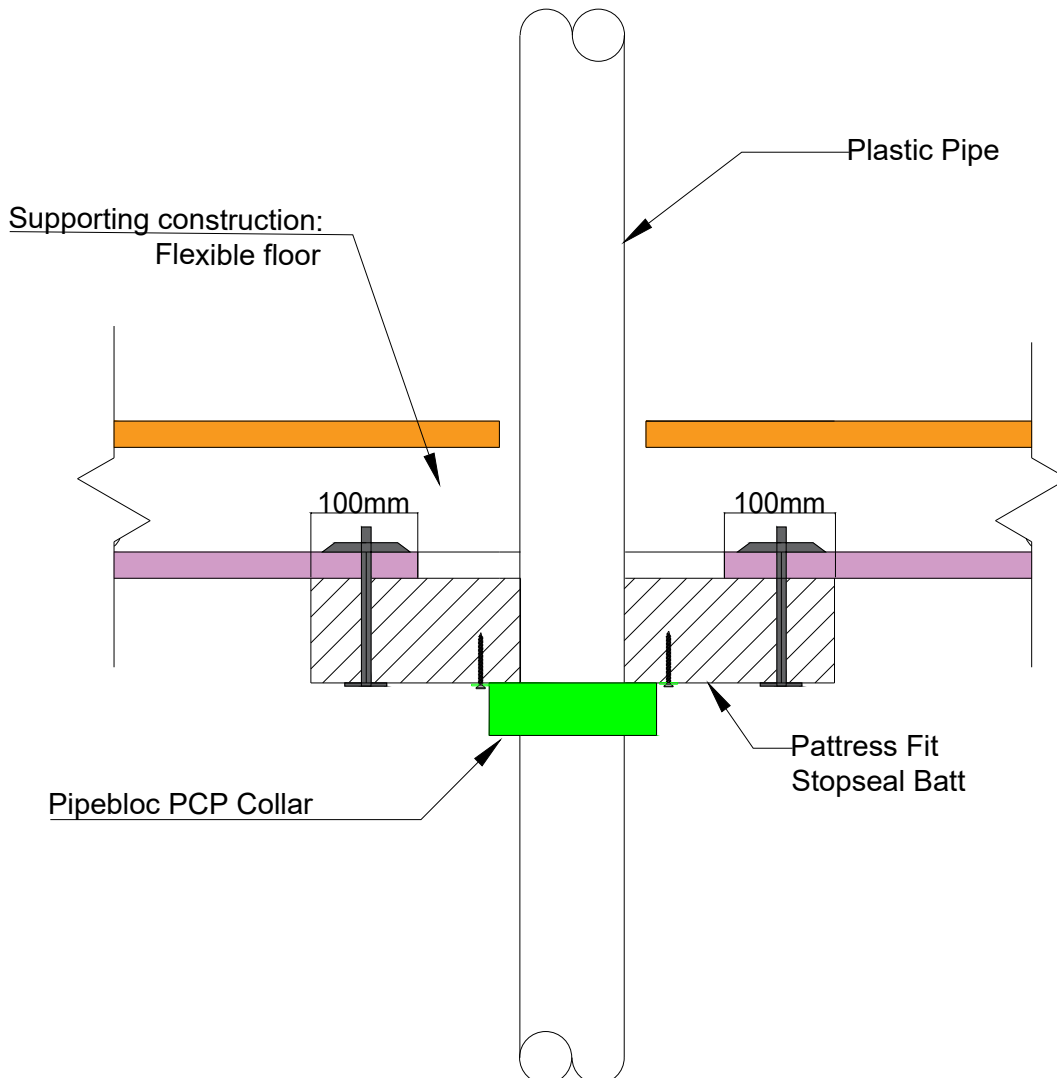
$\geq 50\text{mm}$

Maximum Opening Size:

400 x 400mm

Minimum Distance to Edge:

50mm



TESTED DETAIL

Drawing Title: Pattress Stopseal Batt with Pipebloc PCP for Plastic Pipes up to 110mm in Flexible Floors $>255\text{mm}$

Notes :
 Due to the lack of consideration for these substrate types within the EN1366-3-2021 test standard the systems tested would require prior approval from the authority having jurisdiction on the project to determine the appropriateness of the tested systems . It would need to be determined the site conditions and project requirements are appropriate considering the specific test parameters and conditions.

Scale : NTS
 Drawn by : FSi Limited
 Reviewed by : N/A

FSi Limited
 Westminster Industrial Estate
 Tamworth Road
 Measham
 Leicestershire
 DE12 7DS


FSi Ltd. products are manufactured to rigid standards of quality. Any product which has been applied in accordance with FSi Ltd.'s written instructions and in any application recommended by FSi Ltd., but which is proved to be defective in product quality, will be replaced free of charge. No liability can be accepted for the information provided in this document although it is published in good faith and believed to be correct at time of issue. Any drawings provided are for illustrative purposes only. FSi Ltd. reserves the right to alter product specifications without prior notice, in line with our Company policy of continuous development and improvement. Changes due to new findings are possible, errors and misprints are not excluded. No liability whatsoever will be accepted for any loss, damage or injury arising from the use of the information given.

FSi Ltd. have no control over the methods of installation, competence of operatives or suitability of site conditions, no warranties, expressed or implied, are intended to be given as to the actual performance of the product/system mentioned within this document.

Issue No.	Drawing Reference	Date
01	STOP-060P	12/10/2022