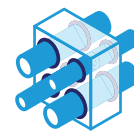


Promat



Penetration seal

PROMASEAL[®] – A Spray

Fire stopping system

Technical brochure

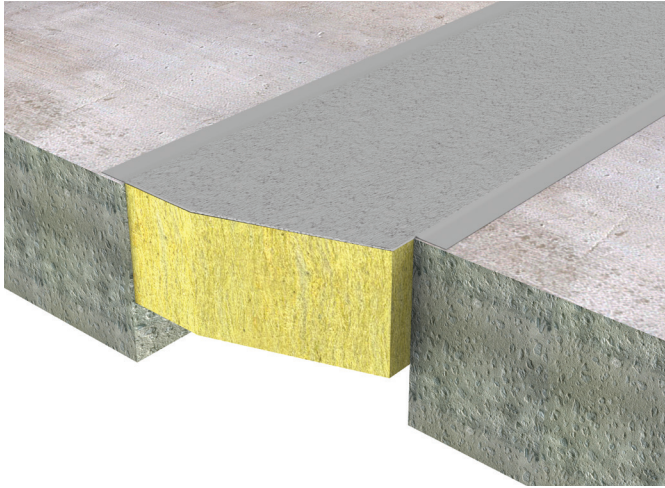


www.promat.com

etex inspiring ways
of living

PROMASEAL[®]-A Spray

Fire stop acrylic sprayable



Coating on mineral wool

Product	Dry-film thickness	Wet-film thickness	Consumption
PROMASEAL [®] -A spray	1mm	1.4mm	1.90kg/m ²

Product description

PROMASEAL[®]-A Spray is an acrylic based, single component fire stopping sealant. It forms a flexible seal once dry, is very suitable for accommodating movement and is also resistant to moisture.

General information

- Storage and transport temperature 3°C - 35°C;
- Stir PROMASEAL[®]-A Spray well (we recommend a mechanical mixer);
- PROMASEAL[®]-A Spray can be diluted (maximum 0.5 litre clean water to each 12kg bucket);
- PROMASEAL[®]-A Spray can be applied with a brush, roller, spatula or airless device;
- Once opened containers should be fully used as soon as possible. Reseal containers properly after use;
- Drying time: approx. 8 hours at 20°C and a relative humidity of 65% for 1mm,
- Clean tools with water after use;
- 1mm dry-film thickness is equivalent to 1.4mm wet-film thickness (approx. 1900g/m²);
- Over painting is possible; adhesion and compatibility must be checked.
- Minimum +5°C, maximum +40°C for both substrate and ambient temperature;
- Substrate must be free of oil, grease and dust;
- Use water to dampen or water-diluted PROMASEAL[®]-A Spray and act as a primer for absorbant substrates.

System installation details

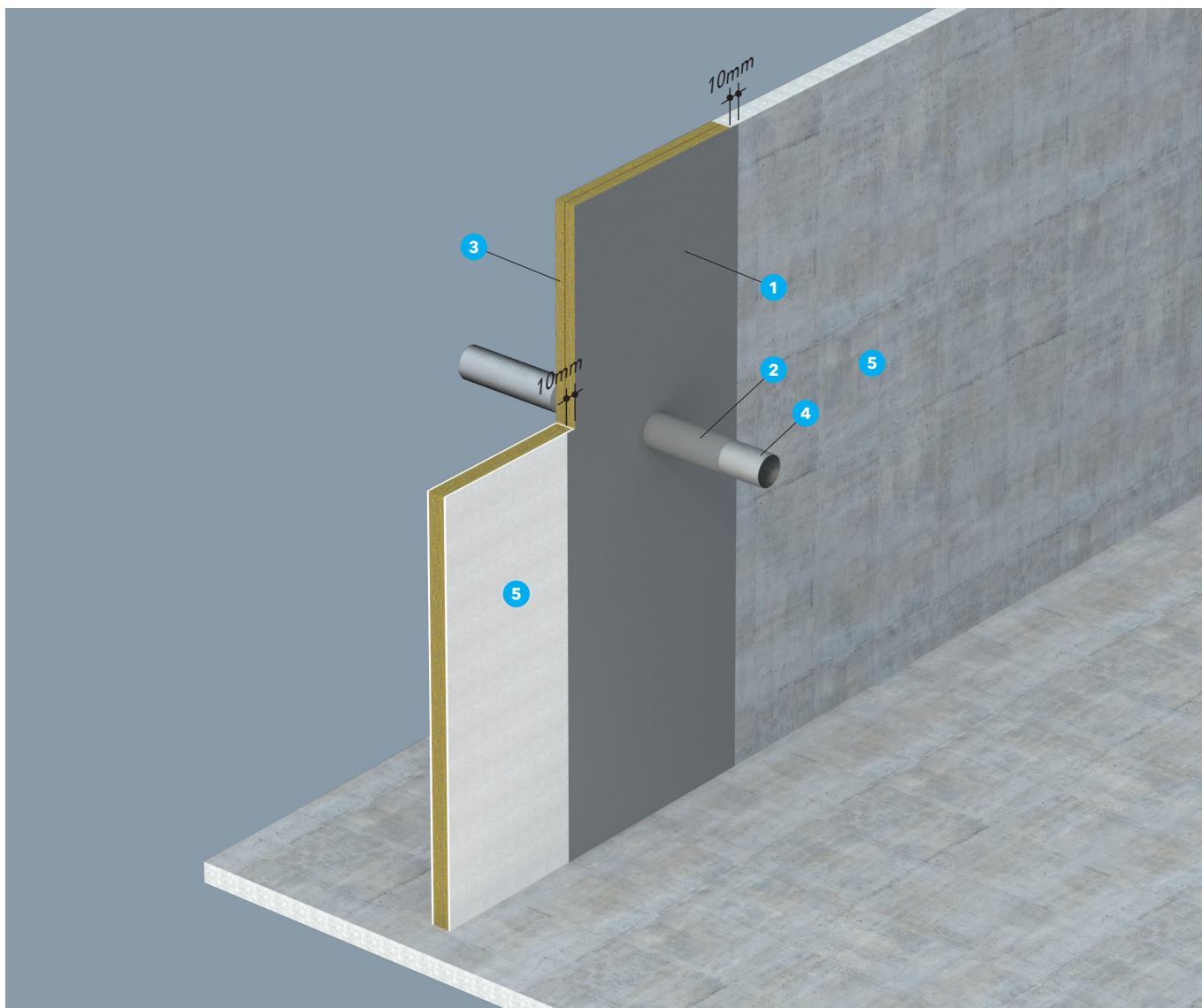
Please refer to ETA, classification report or Handbook for installation details on joints.

Safety information

Safety data sheet available on request.

PROMASEAL®-A Spray – 2-hour fire stopping system

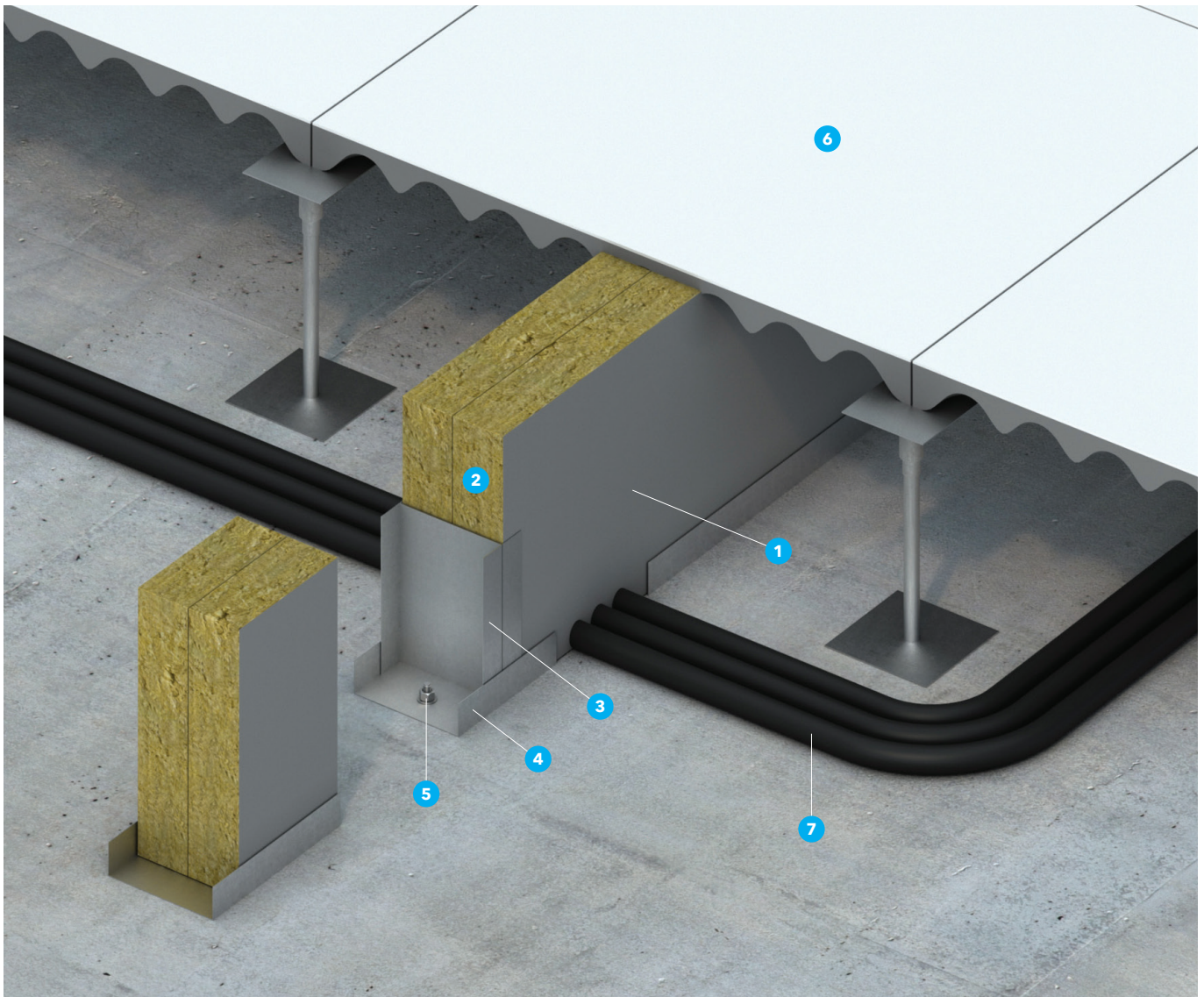
FRL	-/120/120	Model number: SL-AS.80.12 EN	Standard	EN 1366: Part 3
------------	-----------	------------------------------	-----------------	-----------------



1. PROMASEAL®-A Spray: Minimum 1mm dry film thickness coated on both surfaces of the panels with minimum 10mm overlap into adjoining slab surface.
2. PROMASEAL®-A Spray coating on steel pipe. Minimum 2mm dry film thickness.
3. Mineral stonewool 2 x 50mm x 160kg/m³ density tightly fitted into openings.
4. Steel pipe.
5. Dry wall/Masonry wall.

PROMASEAL®-A Spray – 2-hour fire stop within concealed space beneath raised floor system

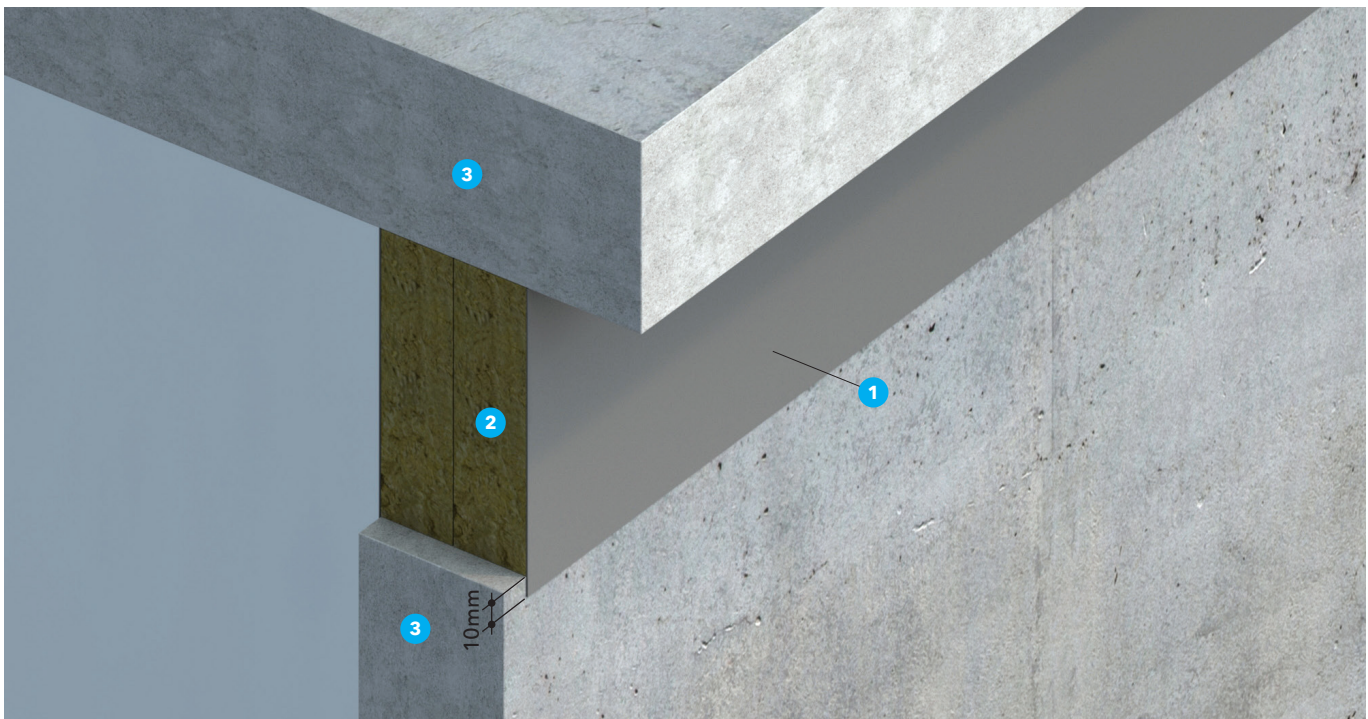
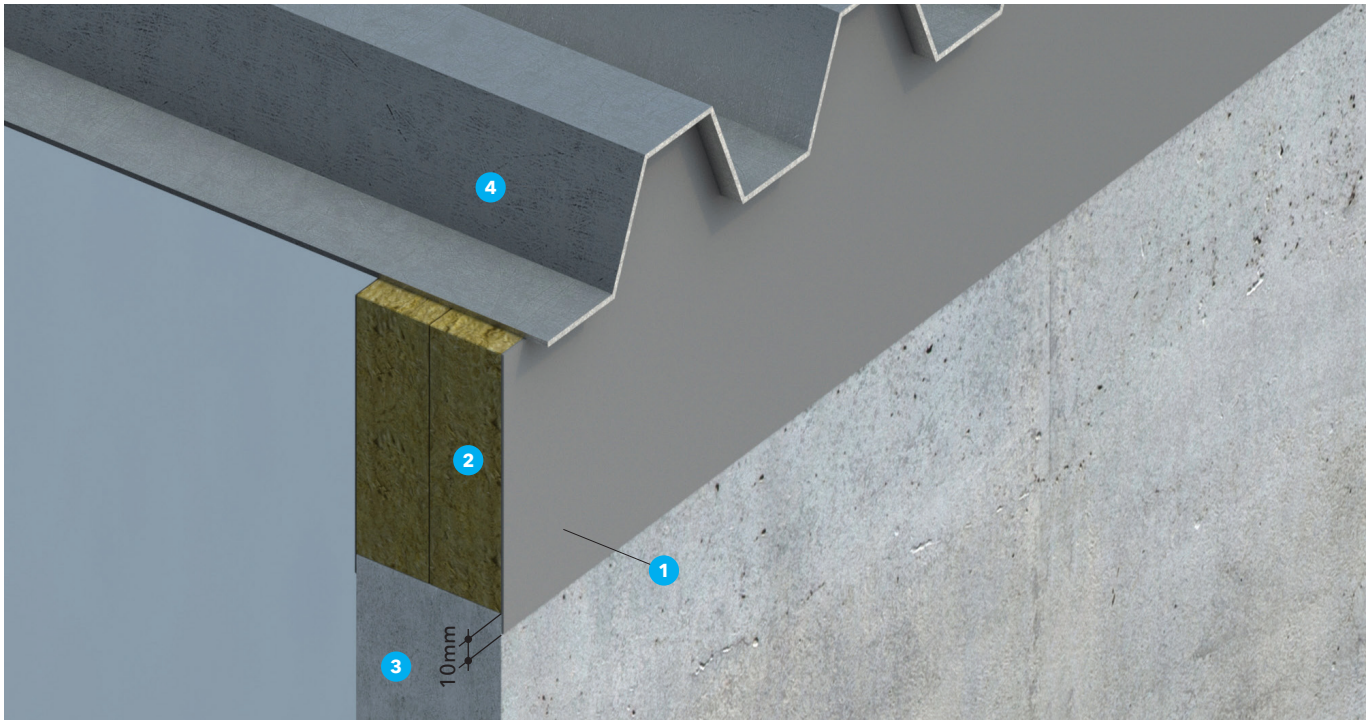
FRL	-/120/120	Model number: SL-AS.83.12 EN	Standard	EN 1366: Part 4
------------	-----------	------------------------------	-----------------	-----------------



1. PROMASEAL®-A Spray coating on both surfaces of the panels. Minimum 1mm dry film thickness.
2. Mineral stonewool 2 x 50mm x 60kg/m³ density tightly fitted into openings.
3. Steel channel U-100mm x 25mm x 0.6mm at 1200mm centres.
4. Steel Channel track U-100mm x 25mm x 0.6mm
5. M6 steel anchors at 600mm centres.
6. Raised floor.
7. Cables.

PROMASEAL®-A Spray – 2-hour fire rated for deflection head application

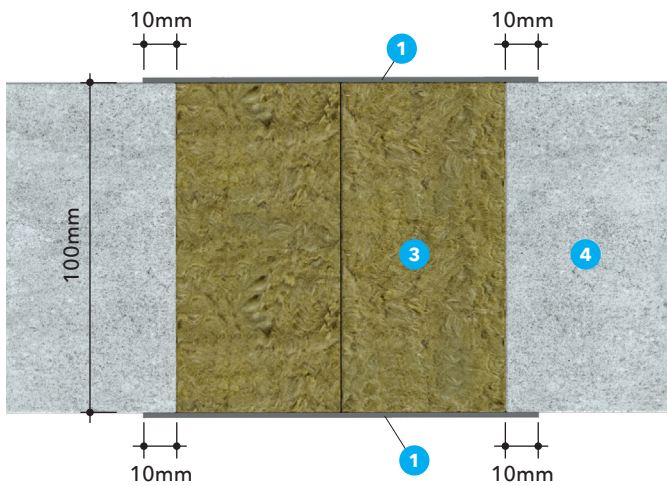
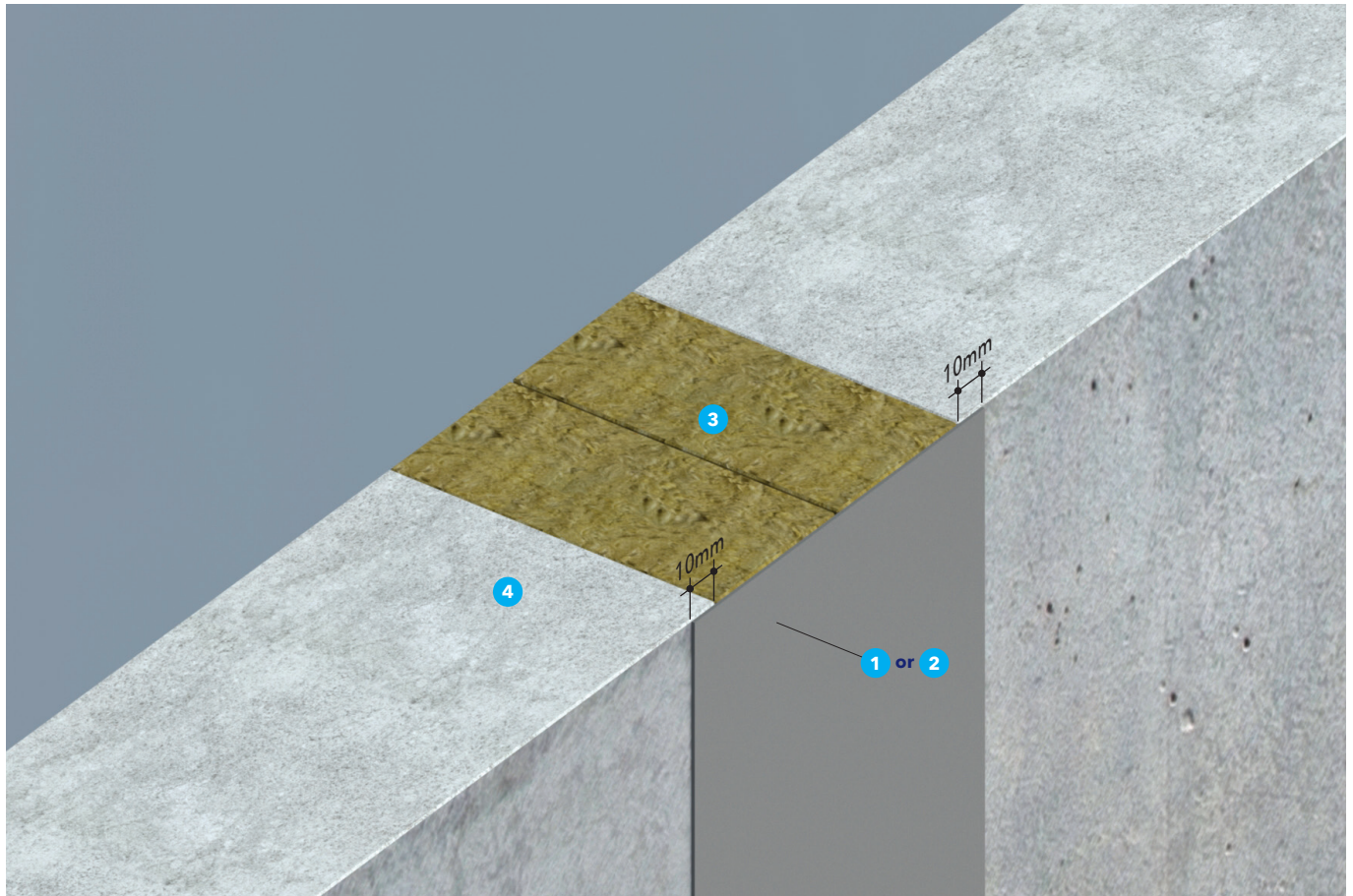
FRL	-/120/120	Model number: SL-AS.83.12 EN	Standard	EN 1366: Part 4
------------	-----------	------------------------------	-----------------	-----------------



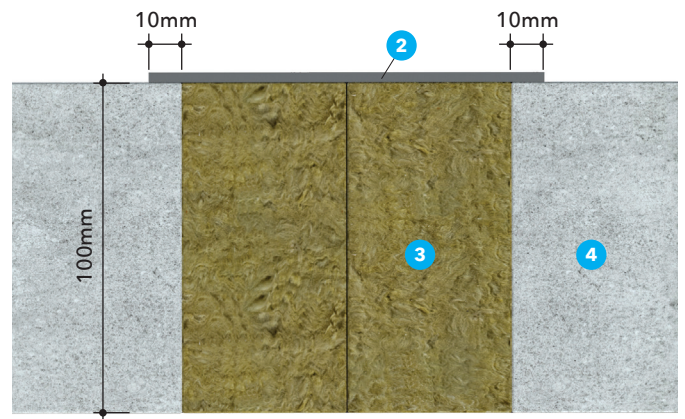
1. PROMASEAL®-A Spray: Minimum 1mm dry film thickness coated on both surfaces of the panels with minimum 10mm overlap into adjoining slab surface.
2. Mineral stonewool 2 x 50mm x 60kg/m³ density tightly fitted into openings.
3. Concrete wall/slab.
4. Steel roofing by others.

PROMASEAL®-A Spray – Up to 2-hour fire rated for linear joint

FRL	-/120/120	Model number: SL-AS.83.12 EN	Standard	EN 1366: Part 4
------------	-----------	------------------------------	-----------------	-----------------



Plan view (Option 1)

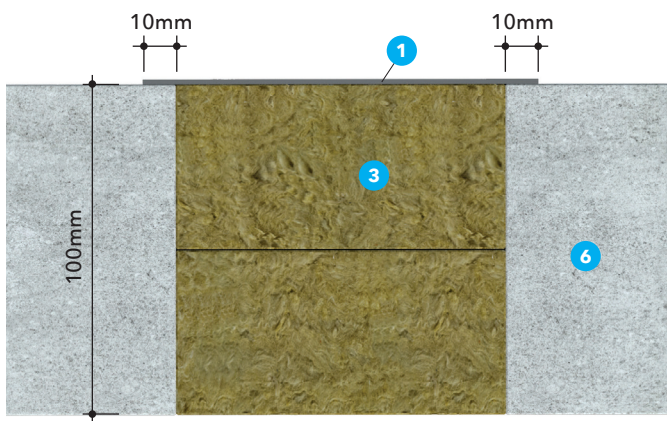
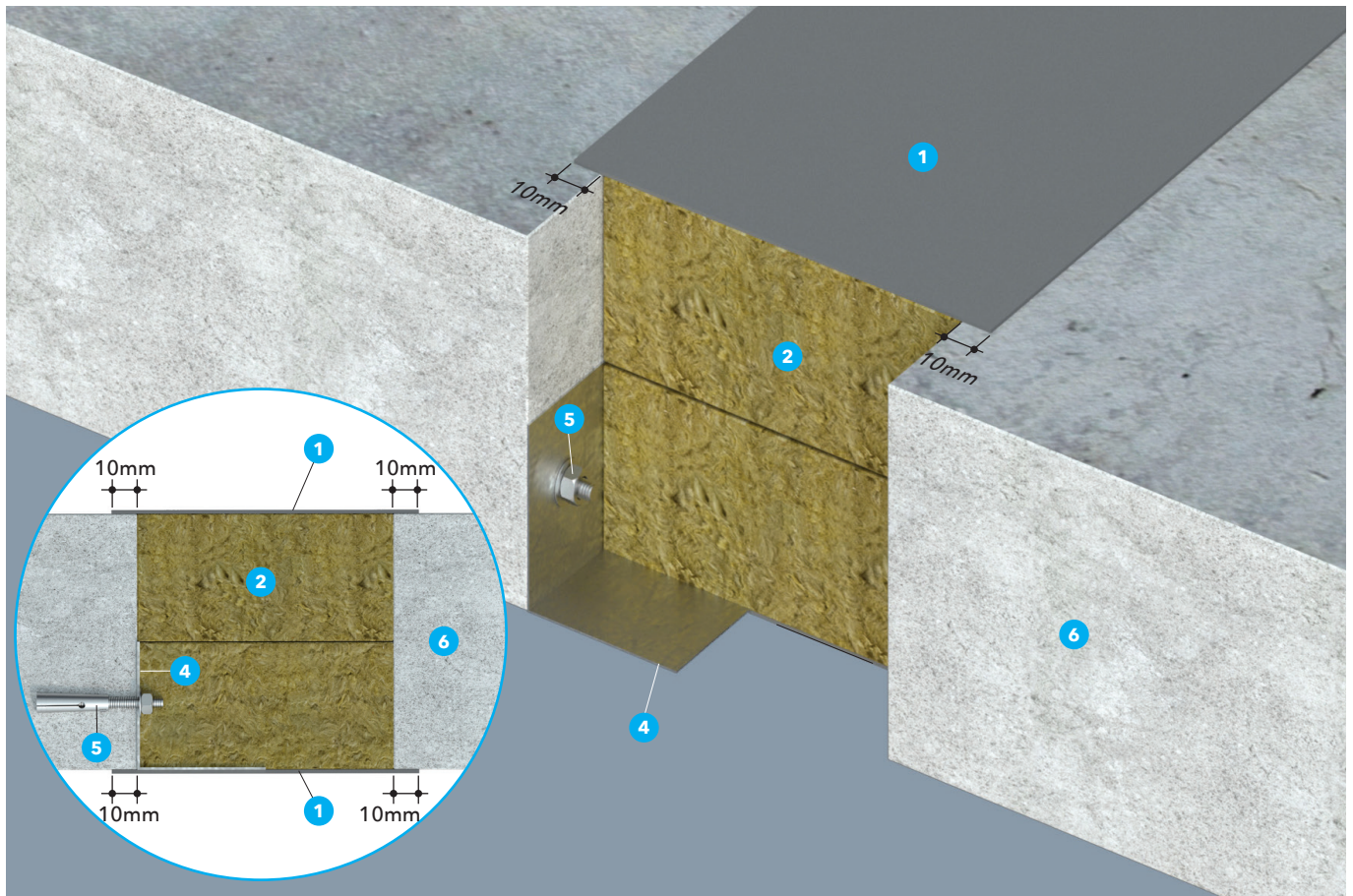


Plan view (Option 2)

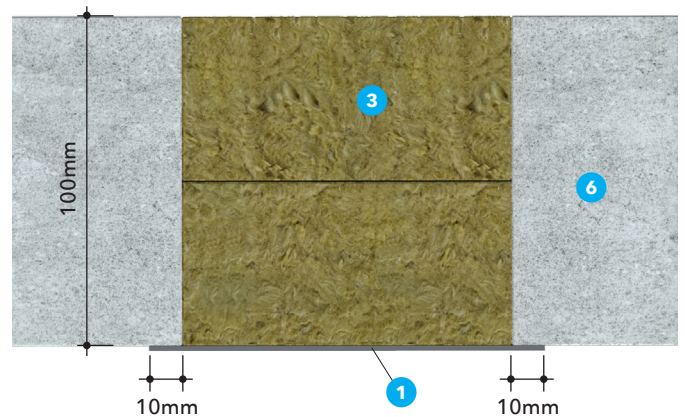
1. PROMASEAL®-A Spray: 1mm dry film thickness coated on both surfaces of the mineral wool with minimum 10mm overlap into adjoining slab surface.
2. PROMASEAL®-A Spray: 2mm dry film thickness coated on one surface of the mineral wool with minimum 10mm overlap into adjoining slab surface.
3. Mineral wool 100mm x 40kg/m³ tightly fitted into openings.
4. Masonry wall.

PROMASEAL®-A Spray – Up to 4-hour fire rated for movement joint

FRL	-/240/240	Model number: SL-AS.83.24 EN	Standard	EN 1366: Part 4
------------	-----------	------------------------------	-----------------	-----------------



Plan view (Option 1)



Plan view (Option 2)

1. PROMASEAL®-A Spray: Up to 2mm dry film thickness coated on both surfaces of the mineral wool with minimum 10mm overlap into adjoining slab surface.
2. Mineral wool 2 x 80mm x 38kg/m³ tightly fitted into openings.
3. Mineral wool 2 x 80mm x 100kg/m³ tightly fitted into openings.

4. Steel angle L-50 x 50 x 0.6mm thick
5. M6 steel anchor bolt at 500mm centre.
6. Masonry floor.

Promat

Australia

Promat Australia Pty Ltd

South Australia office

1 Scotland Road
SA 5031 Mile End South
☎ 1800 Promat (776 628)
☎ +61 8 8352 1014
✉ PAPL.mail@etexgroup.com

New South Wales office

Unit 1, 175 Briens Road
Northmead, NSW 2152
☎ 1800 Promat (776 628)
☎ +61 2 9630 0258
✉ PAPL.mail@etexgroup.com

Victoria office

Unit 1, 355 Grieve Parade
Altona North, VIC 3025
☎ 1800 Promat (776 628)
☎ 1800 334 598
✉ PAPL.mail@etexgroup.com

Queensland office

80 Stradbroke St
Heathwood QLD 4110
☎ 1800 011 376
☎ 1800 334 598
✉ PAPL.mail@etexgroup.com

China

Promat Shanghai Ltd

No.2, Tai Hua Street
Yonghe Economic District
Guangzhou City
Guangdong Province 511356
☎ +86 20 8136 1167
✉ promat.cn@etexgroup.com

Hong Kong

Promat International (Asia Pacific) Ltd

Room 1010, C.C. Wu Building
302-308 Hennessy Road
Wanchai
☎ +852 2836 3692
✉ promat.hk@etexgroup.com

Malaysia

Etex Malaysia Sdn Bhd

(Formerly known as Promat (Malaysia) Sdn. Bhd.)
Unit 19-02-01, Level 2, Wisma Tune
19 Lorong Dungun, Damansara Heights
50490 Kuala Lumpur
☎ +60 3 2095 8555
✉ promat.my@etexgroup.com

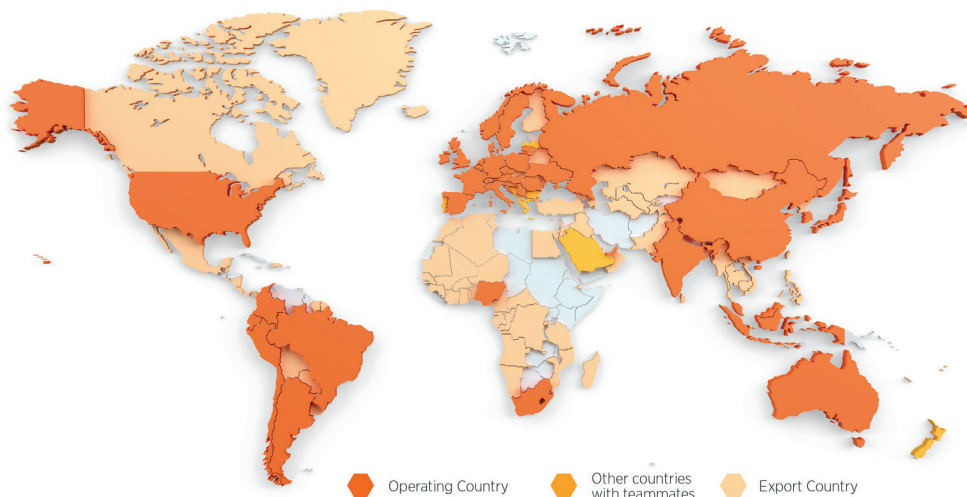
Singapore

Promat Building System Pte Ltd

10 Science Park Road, #03-02 The Alpha
Singapore Science Park II
117684 Singapore
☎ +65 6776 7635
✉ promat.sg@etexgroup.com

www.promat.com

- The technical data provided in this publication is based on mean values prevalent at time of publication and is thus subject to fluctuation. It should not be regarded as a guarantee to system performance.
- All data contained herein conforms to and frequently surpasses generally accepted fire protection standards recognised by most professional fire science practitioners and regulatory authorities worldwide. The same general principle is equally applicable to all Promat products and systems. Promat has access to a considerable body of test authentication data and this can be provided on a complimentary basis upon request. It should be noted however that this publication replaces all previous editions in its entirety.
- This document is protected by International copyright laws. Reproduction and distribution in whole or in part without prior written permission is strictly prohibited. PROMAT, PROMASEAL and logo are registered trademark of Etex NV or an affiliate thereof in Asia Pacific and/or other countries. Any use without authorisation is prohibited and may violate trademark laws.



About Etex

Etex is a global building material manufacturer and pioneer in lightweight construction. Etex wants to inspire people around the world to build living spaces that are ever more safe, sustainable, smart and beautiful.

Founded in 1905, headquartered in Zaventem, Belgium, Etex is a family-owned company with more than 13,500 employees globally. It operates more than 140 sites in 45 countries and recorded a revenue of EUR 3.0 billion and a REBITDA of EUR 570 million in 2021. Etex fosters a collaborative and caring culture, a pioneering spirit and a passion to always do better for its customers.

Etex has five R&D centres supporting five global divisions:

- Building Performance: dry construction solutions including plasterboards and fibre cement boards, plasters and formulated products, passive fire protection and associated products.
- Exteriors: a range of aesthetic fibre cement materials for use in agriculture, architectural and residential exteriors.
- Industry: fire protection and high-performance insulation products for the construction and OEM (Original Equipment Manufacturer) industries.
- Insulation: glass mineral wool and extruded polystyrene (XPS) for thermal and acoustic insulation.
- New Ways: high-tech offsite modular solutions based on wood and steel framing.

Etex's global portfolio includes leading commercial brands such as Promat, Kalsi, Siniat, Equitone, Eternit, Cedral, Durlock, Gyplac, Pladur, Superboard and URSA.

Etex is Inspiring Ways of Living, for more information, please visit our website: www.etexgroup.com