

## PROMASTOP®-M Fire stop mortar Product handling guideline

Penetration seal



### PROMASTOP®-M Fire stop mortar



PROMASTOP®-M is a cement based fire stopping mortar, which binds without cracks.

#### General information

- Cement based mortar for external use;
- Installation manual or by machine
- Recommended mixing ratio -
  - **manual installation:**
    - mortar : water = 5 : 2.4 (=20 kg mortar powder will produce up to 23 litres fresh mortar);
  - **machine installation:**
    - depending on machine settings;
- The consistency of PROMASTOP®-M is very sticky and can therefore even be applied overhead in small areas.
- Pre-drilling for screws not required;
- Ensure enough space around the services to install a fire stopping penetration seal. Otherwise the necessary space has to be created.
- Clean application tools immediately after use with water;
- PROMASTOP®-M will reach its final hardness after 28 days
- Use category
- Minimum +5 °C, maximum +35 °C substrate and surrounding temperature
- For use within absorbent substrates, pre-moisten with clean water
- Once opened bags should be used as soon as possible. Reseal bags properly after use;
- Store bags under dry conditions

#### System installation details

Please refer to ETA, classification report or Handbook for installation details on cable, pipes and ducts.

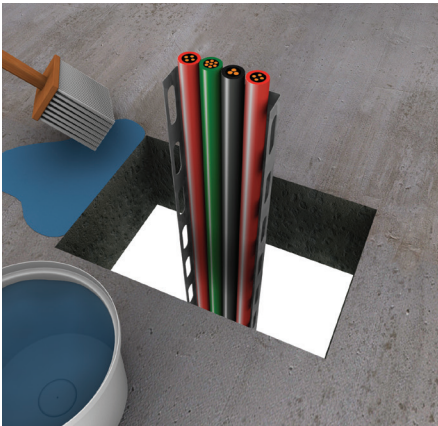
#### Safety information

Safety data sheet available on request.

Theoretical consumption data for 100 mm thickness and 1 m<sup>2</sup> penetration

	1M <sup>2</sup>	10 % cable capacity	20 % cable capacity	30 % cable capacity	40 % cable capacity
PROMASTOP®-M	kg	100	90	80	70
PROMASEAL®-AG	pc.	2.5	5	7.5	10

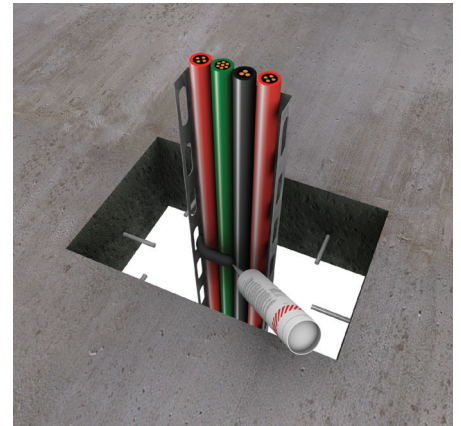
### Installation guideline



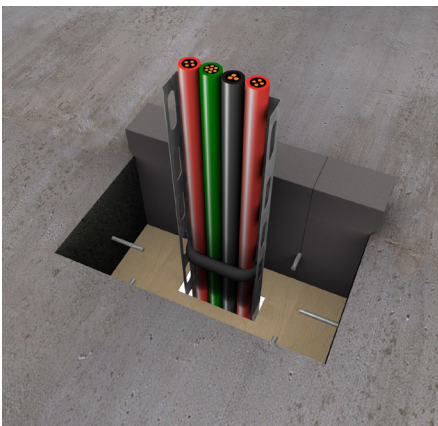
1. Clean opening with water



2. For building penetration seals in floors, install 100 mm plugirons. These plug irons should be installed central of mortar penetration seal every 300 mm, but minimum one plug iron on each side and should be inserted the floor 50 mm and covered by 50 mm with PROMASTOP®-M. No plug irons required for wall application.



3. Apply PROMASEAL®-AG for cables and cable bundles



4. Where necessary fix form work for lining (eg mineral wool, wood or other shuttering) or framing (eg PROMATECT® boards, fire resistance gypsum boards), depending on size of penetration; Wall: install PROMASTOP®-M symmetrically (25 or 50 mm on both sides outside a 100 mm wall), also install PROMASTOP®-B symmetrically; Floor: install PROMASTOP®-M and PROMASTOP®-B asymmetrically (50 mm outside on upper side of a 150 mm floor);



5. Close remaining opening with PROMASTOP®-M. Consider that mortar is sagging in bigger penetration sizes, which requires a work over to reach correct thickness or height;



6. Smoothen the surface;  
Fix identification label

**For more installation details on cables, pipes and ducts refer to classification report.**

## Headquarters – Belgium

### Etex Building Performance NV

Bormstraat 24, 2830 Tisselt  
T +32 15 718 100  
F +32 15 718 109  
E [info@promat-international.com](mailto:info@promat-international.com)  
[info@promat.be](mailto:info@promat.be)  
[www.promat-international.com](http://www.promat-international.com)  
[www.promat.be](http://www.promat.be)

## Australia

### Promat Australia Pty Ltd

1 Scotland Road  
SA 5031 Mile End South  
T 1800 Promat (776 628)  
F +61 8 8352 1014  
E [mail@promat.com.au](mailto:mail@promat.com.au)  
[www.promat.com.au](http://www.promat.com.au)

## Austria

### Etex Building Performance GmbH

St.-Peter-Straße 25 / Bau 39  
4021 Linz/Austria  
T +43 732 6912-0  
F +43 732 6912 3740  
E [info.at@etexgroup.com](mailto:info.at@etexgroup.com)  
[www.promat.at](http://www.promat.at)  
DVR-Nr.: 4011276

## Chile

### Promat Chile SA

Camino a Melipilla, Maipú  
10803 Santiago  
T +56 2 2391 2200  
E [contacto@promat.cl](mailto:contacto@promat.cl)  
[www.promat.cl](http://www.promat.cl)

## China

### Promat Shanghai Ltd

Room 506, Block A, Qi Lin Plaza  
13-35 Pan Fu Road  
510180 Guangzhou  
T +86 20 8136 1167  
F +86 20 8136 1372  
E [info@promat.com.cn](mailto:info@promat.com.cn)  
[www.promat.com.cn](http://www.promat.com.cn)

## Colombia

### Promat Colombia

Av. Kra 19 No. 120-71 Suite 506  
110111 Bogotá D.C.  
T +57 1 355 3500  
F +57 1 355 1785  
E [info@promat.com.co](mailto:info@promat.com.co)  
[www.promat.com.co](http://www.promat.com.co)

## Czech Republic

### Promat sro

Kkalova 22/784  
16000 Praha 6 - Bubeneč  
T +420 2 2439 0811  
F +420 2 3333 3576  
E [promat@promatpraha.cz](mailto:promat@promatpraha.cz)  
[www.promatpraha.cz](http://www.promatpraha.cz)

## Denmark

### Promat Nordic

Kometvej 36, 6230 Røddekro  
T +45 7366 1999  
F +45 7466 1020  
E [info@promat.nu](mailto:info@promat.nu)  
[www.promat.nu](http://www.promat.nu)

## France

### Promat SAS

Rue de l'Amandier, B.P. 66  
78540 Vernouillet  
T +33 1 3979 6160  
F +33 1 3971 1660  
E [info@promat.fr](mailto:info@promat.fr)  
[www.promat.fr](http://www.promat.fr)

## Germany

### Promat GmbH

Scheifenkamp 16  
40878 Ratingen  
T +49 2102 493 0  
F +49 2102 493 111  
E [mail@promat.de](mailto:mail@promat.de)  
[www.promat.de](http://www.promat.de)

## Hong Kong

### Promat International (Asia Pacific) Ltd

Room 1010, C.C. Wu Building  
302-308 Hennessy Road, Wanchai  
T +852 2836 3692  
F +852 2834 4313  
E [apromath@promat.com.hk](mailto:apromath@promat.com.hk)  
[www.promat.com.hk](http://www.promat.com.hk)

## Hungary

### Promat Hungary

(Division of Promat doo)  
Pirosrozsa u. 32  
1163 Budapest  
T +36 1 317 5891  
E [info.hu@promat-see.com](mailto:info.hu@promat-see.com)  
[www.promat-see.com](http://www.promat-see.com)

## India

### Promat Fire & Insulation Pte Ltd

Unit 605, 6th Floor, Tower B  
Global Business Park  
Mehrauli Gurgaon Road  
Sector 26, Gurgaon  
122002 Haryana  
T +91 12 4434 6865  
E [info@promat-india.com](mailto:info@promat-india.com)  
[www.promat-india.com](http://www.promat-india.com)

## Ireland

### Promat Fire Protection

43 Fitzwilliam Square West  
Dublin 2  
T +353 1 676 5788  
[www.promat.ie](http://www.promat.ie)

## Italy

### Promat SpA

Via Perlasca 14  
27010 Vellezzo Bellini (PV)  
T +39 0382 457 51  
F +39 0382 926 900  
E [info@promat.it](mailto:info@promat.it)  
[www.promat.it](http://www.promat.it)

## Japan

### Promat Japan Corporation

Pacific Marks Shinjuku  
4-15-7 Nishi-Shinjuku, Shinjuku-Ku  
160-0023 Tokyo  
T +81 3 3377 2821  
F +81 3 3378 2821  
E [sales@promat.jp](mailto:sales@promat.jp)

## Kazakhstan

### Promat Kazakhstan

(Representative office of SEIES Swiss  
Eastern Investment Economical  
Systems AG)  
Prospekt Sheltoqsan 37, Office 200a  
050004 Almaty  
T +41 71 666 6210  
F +41 71 666 6211  
[www.promat.kz](http://www.promat.kz)

## Malaysia

### Promat (Malaysia) Sdn Bhd

Unit 19-02-01, Level 2, Wisma Tune  
19 Lorong Dungun, Damansara Heights  
50490 Kuala Lumpur  
T +60 3 2095 5111  
F +60 3 2095 6111  
E [info@promat.com.my](mailto:info@promat.com.my)  
[www.promat.com.my](http://www.promat.com.my)

## Netherlands

### Promat BV

Vleugelboot 22  
3991 CL Houten  
T +31 30 241 0770  
F +31 30 241 0771  
E [info@promat.nl](mailto:info@promat.nl)  
[www.promat.nl](http://www.promat.nl)

## Peru

### Promat Peru

Jr. Republica del Ecuador 448  
15079 Cercado de Lima  
T +51 619 6400  
E [contacto@promat.pe](mailto:contacto@promat.pe)  
[www.promat.pe](http://www.promat.pe)

## Poland

### Promat TOP Sp zoo

Przeclawska 8  
03-879 Warszawa  
T +48 22 212 2280  
F +48 22 212 2290  
E [top@promatop.pl](mailto:top@promatop.pl)  
[www.promatop.pl](http://www.promatop.pl)

## Russia

### Promat A+B

65/1 Profsouznay Street  
117342 Moscow  
T +7 495 246 0101  
F +7 495 246 0192  
E [salesite@promat.ru](mailto:salesite@promat.ru)  
[www.promat.ru](http://www.promat.ru)

## Singapore

### Promat Building System Pte Ltd

10 Science Park Road, #03-14 The  
Alpha  
Singapore Science Park II  
117684 Singapore  
T +65 6776 7635  
F +65 6776 7624  
E [info@promat.com.sg](mailto:info@promat.com.sg)  
[www.promat-ap.com](http://www.promat-ap.com)

## Slovenia

### Promat doo

Kidričeva 56b  
4220 Škofja Loka  
T +386 4515 1451  
F +386 4515 1450  
E [info@promat-see.com](mailto:info@promat-see.com)  
[www.promat-see.com](http://www.promat-see.com)

## South Korea

### Promat International (Asia Pacific) Ltd

(Korea Branch Office)  
#1104 Dong-a Building  
117 Namdaemun-ro, Jung-gu  
04522 Seoul  
T +82 70 7794 8216  
F +82 2 779 5566  
E [info@promat-ap.com](mailto:info@promat-ap.com)  
[www.promat-ap.com](http://www.promat-ap.com)

## Spain

### Promat Ibérica SA

C/ Velazquez, 41-2, Planta  
28001 Madrid  
T +34 91 781 1550  
F +34 91 575 1597  
E [info@promat.es](mailto:info@promat.es)  
[www.promat.es](http://www.promat.es)

## Switzerland

### Promat AG

Stationsstrasse 1  
8544 Rickenbach - Attikon  
T +41 52 320 9400  
F +41 52 320 9402  
E [office@promat.ch](mailto:office@promat.ch)  
[www.promat.ch](http://www.promat.ch)

## UAE

### Promat Fire Protection LLC

Plot no. 597-921  
Dubai Investment Park 2  
PO Box 123945, Dubai  
T +971 4 885 3070  
F +971 4 885 3588  
E [info@promatfp.ae](mailto:info@promatfp.ae)  
[www.promatfp.ae](http://www.promatfp.ae)

## UK

### Promat UK Ltd

Gordano House  
Marsh Lane, Easton-in-Gordano  
BS20 ONE Bristol  
T +44 800 373 636  
F +44 1275 379 037  
E [marketinguk@promat.co.uk](mailto:marketinguk@promat.co.uk)  
[www.promat.co.uk](http://www.promat.co.uk)

## USA

### Promat Inc

1731 Fred Lawson Drive  
TN 37801 Maryville  
T +1 865 681 0155  
F +1 865 681 0016  
E [sales@promat.us](mailto:sales@promat.us)  
[www.promat.us](http://www.promat.us)