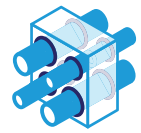


Promat

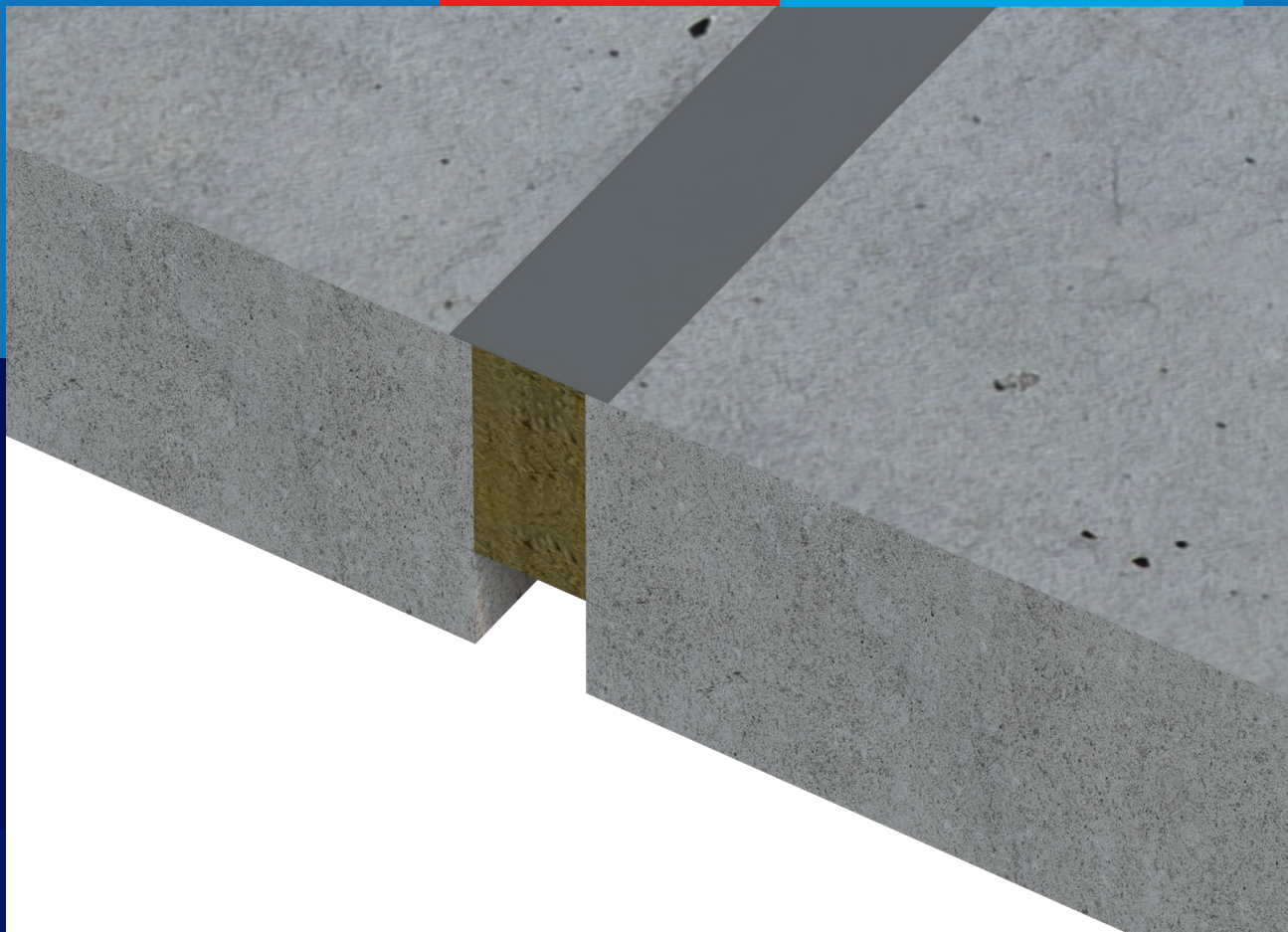


Penetration seal

PROMASEAL[®] – A Spray

Fire stopping acrylic sprayable

Installation Guide

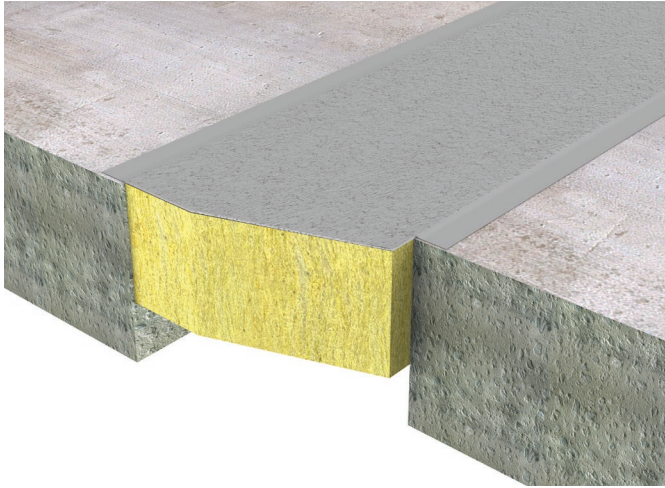


www.promat.com

etex inspiring ways
of living

PROMASEAL®-A Spray

Fire stop acrylic sprayable



Coating on mineral wool

Product	Dry-film thickness	Wet-film thickness	Consumption
PROMASEAL®-A spray	1mm	1.4mm	1.90kg/m ²

Product description

PROMASEAL®-A Spray is an acrylic based, single component fire stopping sealant. It forms a flexible seal once dry, is very suitable for accommodating movement and is also resistant to moisture.

General information

- Storage and transport temperature 3°C - 35°C;
- Stir PROMASEAL®-A Spray well (we recommend a mechanical mixer);
- PROMASEAL®-A Spray can be diluted (maximum 0.5 litre clean water to each 12kg bucket);
- PROMASEAL®-A Spray can be applied with a brush, roller, spatula or airless device;
- Once opened containers should be fully used as soon as possible. Reseal containers properly after use;
- Drying time: approx. 8 hours at 20°C and a relative humidity of 65% for 1mm,
- Clean tools with water after use;
- 1mm dry-film thickness is equivalent to 1.4mm wet-film thickness (approx. 1900g/m²);
- Over painting is possible; adhesion and compatibility must be checked.
- Minimum +5°C, maximum +40°C for both substrate and ambient temperature;
- Substrate must be free of oil, grease and dust;
- Use water to dampen or water-diluted PROMASEAL®-A Spray and act as a primer for absorbant substrates.

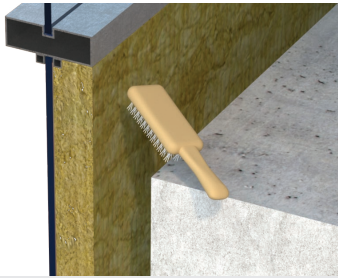
System installation details

Please refer to ETA, classification report or Handbook for installation details on joints.

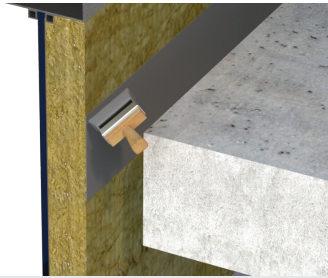
Safety information

Safety data sheet available on request.

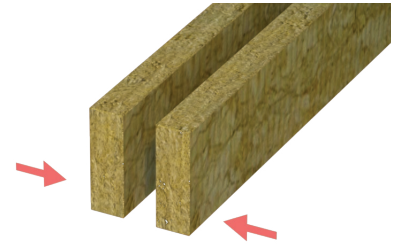
Installation guideline: Curtain wall



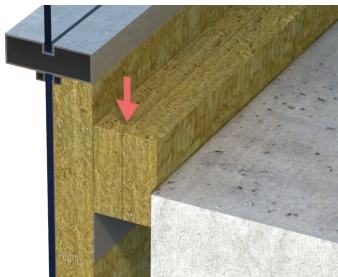
1. Clean aperture opening and dampen with water if required



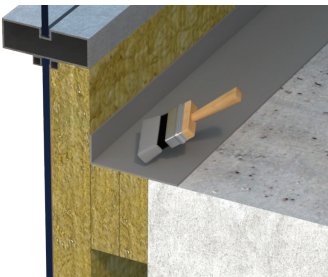
2. Coat the aperture opening



3. Depending on joint width use correct amount of mineral wool boards, level of mineral wool compression at least 12.5%.



4. Compress mineral wool and insert in the joint



5. Apply correct thickness of PROMASEAL®-A spray onto the mineral wool with overlapping on the vertical facade insulation and the floor

The products must be applied in accordance with regulations for construction material in general and fire stopping in particular, with the applicable national test certificates and approvals and in accordance with applicable national building regulations. Products may only be applied by trained professionals with adequate knowledge and only after thorough review of the installation guidelines, safety data sheets, national test certificates and approvals. For additional information on how and where to use this product please refer to the Promat handbook or contact your local Promat office. All the relevant documents can be obtained free of charge from the local Promat office.

Australia

Promat Australia Pty Ltd

South Australia office

1 Scotland Road
SA 5031 Mile End South
☎ 1800 Promat (776 628)
☎ +61 8 8352 1014
✉ PAPL.mail@etexgroup.com

New South Wales office

Unit 1, 175 Briens Road
Northmead, NSW 2152
☎ 1800 Promat (776 628)
☎ +61 2 9630 0258
✉ PAPL.mail@etexgroup.com

Victoria office

Suite 205, 198 Harbour Esplanade
Docklands, VIC 3008
☎ 1800 Promat (776 628)
☎ 1800 334 598
✉ PAPL.mail@etexgroup.com

Queensland office

☎ 1800 011 376
☎ 1800 334 598
✉ PAPL.mail@etexgroup.com

China

Promat Shanghai Ltd

No.2, Tai Hua Street
Yonghe Economic District
Guangzhou City
Guangdong Province 511356
☎ +86 20 8136 1167
✉ promat.cn@etexgroup.com

Hong Kong

Promat International (Asia Pacific) Ltd

Room 1010, C.C. Wu Building
302-308 Hennessy Road
Wanchai
☎ +852 2836 3692
✉ promat.hk@etexgroup.com

Malaysia

Etex Malaysia Sdn Bhd

(Formerly known as Promat (Malaysia) Sdn. Bhd.)
Unit 19-02-01, Level 2, Wisma Tune
19 Lorong Dungun, Damansara Heights
50490 Kuala Lumpur
☎ +60 3 2095 8555
✉ promat.my@etexgroup.com

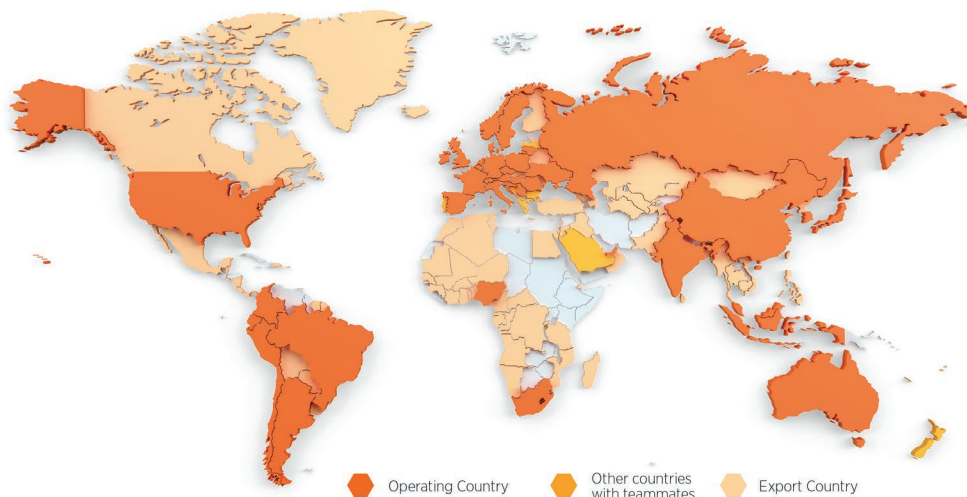
Singapore

Promat Building System Pte Ltd

10 Science Park Road, #03-14 The Alpha
Singapore Science Park II
117684 Singapore
☎ +65 6776 7635
✉ promat.sg@etexgroup.com

www.promat.com

- The technical data provided in this publication is based on mean values prevalent at time of publication and is thus subject to fluctuation. It should not be regarded as a guarantee to system performance.
- All data contained herein conforms to and frequently surpasses generally accepted fire protection standards recognised by most professional fire science practitioners and regulatory authorities worldwide. The same general principle is equally applicable to all Promat products and systems. Promat has access to a considerable body of test authentication data and this can be provided on a complimentary basis upon request. It should be noted however that this publication replaces all previous editions in its entirety.
- This document is protected by International copyright laws. Reproduction and distribution in whole or in part without prior written permission is strictly prohibited. PROMAT, PROMASEAL and logo are registered trademark of Etex NV or an affiliate thereof in Asia Pacific and/or other countries. Any use without authorisation is prohibited and may violate trademark laws.



About Etex

Etex is an international building materials specialist; the company wants to inspire people around the world to build living spaces that are ever more safe, sustainable, smart and beautiful. Founded since 1905 and headquartered in Belgium, Etex currently operates more than 110 sites including plants, quarries and offices in 42 countries with over 11,000 employees globally.

Etex fosters a collaborative and caring culture, a pioneering spirit and a passion to always do better for its customers. Building on its experience and global market needs, the company strives to improve its customers quality of living with ever more effective lightweight solutions.

Its three R&D centres support four global sales divisions:

- Building Performance: Leader in plasterboards and fibre cement boards, and the global reference in passive fire protection solutions for the residential and commercial segments.
- Exteriors: Provider of innovative, durable, high performance and beautiful fibre cement exterior materials for architectural, residential and agricultural projects.
- Industry: Front runner of engineering expertise to drive the future of high performance thermal and acoustic insulation as well as passive fire protection in the industrial, aerospace and energy sectors.
- New Ways: New Ways offers high-tech, lightweight, factory-assembled panel and modular solutions based on timber and steel framing.

Etex is Inspiring Ways of Living, for more information, please visit our website: www.etexgroup.com