

# Promat

## Promat Australia Pty. Ltd.

# SYSTEM CERTIFICATE\*

This is to certify that

## PROMATECT® 100

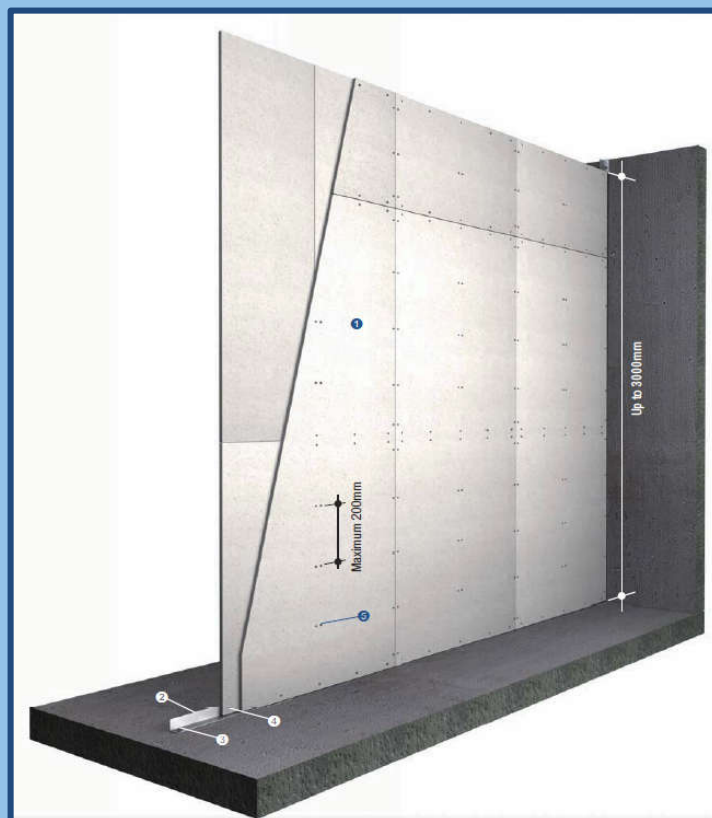
has been tested/approved for solid laminated partitions in accordance with

“Australian Standard 1530: Part 4

Methods for fire tests on building materials, components and structures”

For walls up to 3.0m high for an FRL of -/60/60 ( 2 x 15mm)

(Approval No. WFRA 41099as.1)



\* This is NOT a test certificate. For installation instructions or further information please contact Promat Australia Pty. Ltd.

Dial: 1800 PROMAT (776 628) Email: [PAPL.Mail@etexgroup.com](mailto:PAPL.Mail@etexgroup.com) Visit: [www.promat.com](http://www.promat.com)

**Head Office**  
**New South Wales Office**  
**Victoria Office**  
**Queensland Office**

1 Scotland Road, Mile End South, SA 5031 AUSTRALIA  
 Unit 1, 175 Briens Road, Northmead, NSW 2152 AUSTRALIA  
 Suite 205, 198 Harbour Esplanade, Docklands, VIC 3008 AUSTRALIA  
 433 Logan Road, Stones Corner, QLD 4120 AUSTRALIA

an **etex** company