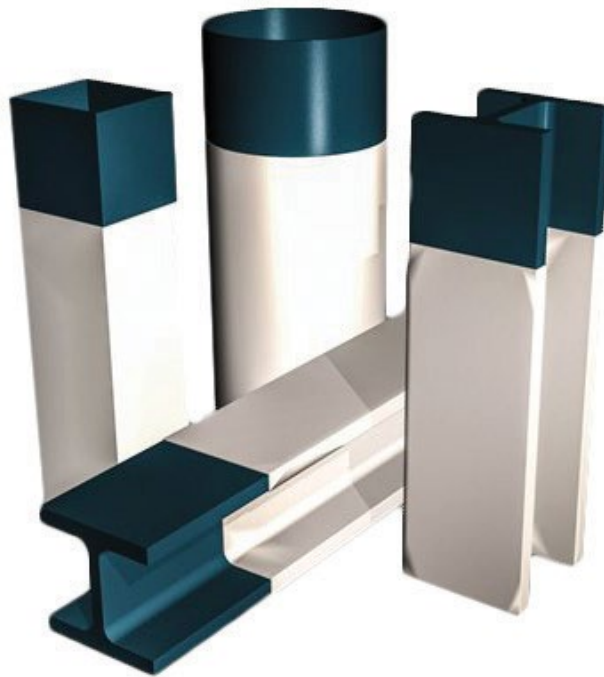


Promat

PROMAPAIN[®]-SC4 Reactive fire protective coating



www.promat-see.com





General description

PROMAPAIN[®]-SC4 is a single component intumescent paint in water emulsion consisting of synthetic resin especially formulated for fire protection of steel structures.

Fields of application

- inside of buildings
- in open halls

System advantages / customer benefits

- aesthetic surface (thin and seamless result)
- easy to apply
- can be repainted
- both open and hollow steel sections
- suitable for galvanized steel structures
- fire resistance up to R 120

Test certificate / approval

PROMAPAIN[®]-SC4 is approved by ETA and is tested for steel structures according to European standards. The coated steel components achieve fire resistance classes from R 15 to R 120.

Processing

PROMAPAIN[®]-SC4 may only be applied by trained professionals. Not for use in components that are constantly in highly humid areas or are exposed to aggressive gases. Surface must be free from grease, oil, rust, dirt or any other contaminant that may inhibit the bonding of PROMAPAIN[®]-SC4 to the primer. Stir well before use. Apply PROMAPAIN[®]-SC4 with a roller, brush or airless spray. Maximum dry film thickness (DFT) of one applied layer should be approximately 750 µm, which is approximately 1.100 µm of wet film thickness (WFT). When using a roller or brush, the maximum DFT of one applied layer should be approximately 350 µm (approx. 515 µm WFT). The processing temperature must be between +10°C and +35°C.

Packaging

- 25 kg sheet metal containers
 - 900 kg per pallet
- Subject to change.

Storage requirements

Store in a cool, dry place. Shelf-life at least 18 months in original sealed containers.

Safety instructions

PROMAPAIN[®]-SC4 is a technical paint, no mixing with conventional paints is allowed. Individual layers should be applied with care. Check compliance with the required layer thickness. Only tested and approved primers and topcoats should be used. Product details available on request at Promat.

Technical data and properties

Colour	white
Consistency	liquid
Density	1.300 kg/m ³ ± 50 kg/m ³
Solid content	68 % ± 2%
Expansion ratio	high expansion
Viscosity	~30 Pas at 20°C
Consumption	~1,95 kg/m ² [1 mm DFT*]
Curing time between layers (for the same product)	~1000 µm after 8 hours (20°C, 50% RH)
Working temperature	+10°C up to +35°C
Storage temperature	+5°C up to +40°C
VOC-content	< 2,2 g/l
Dilution	water - max. 5%
Use category (according to ETAG 018-2)	without topcoat: type Z ₂ with suitable protective topcoat: type X, Y and Z ₁

* Dry film thickness

Slovenia, SEE Management**Promat d.o.o.**

Kidričeva 56b
4220 Škofja Loka
T + 386 4 51 51 451
F + 385 4 51 51 450
E info@promat-see.com
www.promat-see.com

Romania**Branch office of Promat d.o.o. Slovenia**

Str. Vulturilor Nr. 98, 5th Floor
030857 Bucharest
T +40 31 224 01 00
F +40 31 224 01 01
E info.ro@promat-see.com
www.promat-see.com

Bulgaria**Branch office of Promat d.o.o. Slovenia**

Aleksandar Zhendov 6
1113 Sofia
M +359 888 14 38 85
M +359 878 81 51 05
E info.bg@promat-see.com
www.promat-see.com

Serbia, Macedonia, Montenegro,**Albania, Kosovo****Branch office of Promat d.o.o. Slovenia**

Kopaonička 18
18000 Niš
T +381 18 4 530 297
M +381 64 61 39 763
F +381 18 4 230 570
E info.rs@promat-see.com
www.promat-see.com

Croatia, Bosnia and Herzegovina**Branch office of Promat d.o.o. Slovenia**

Samoborska 91
10090 Zagreb
T +385 1 349 63 24
F +385 1 379 41 54
E info.hr@promat-see.com
www.promat-see.com

Slovakia**Branch office of Promat d.o.o. Slovenia**

Pražská 2
949 11 Nitra
T +421 377 729 165
E info.sk@promat-see.com
www.promat-see.com

Hungary**Branch office of Promat d.o.o. Slovenia**

Pirosrózsa u. 32.
1163 Budapest
T +36 1 317 58 91
E info.hu@promat-see.com
www.promat-see.com

For all other Promat addresses, please visit www.promat-international.com.