



EQUITONE
Fibre cement facade materials

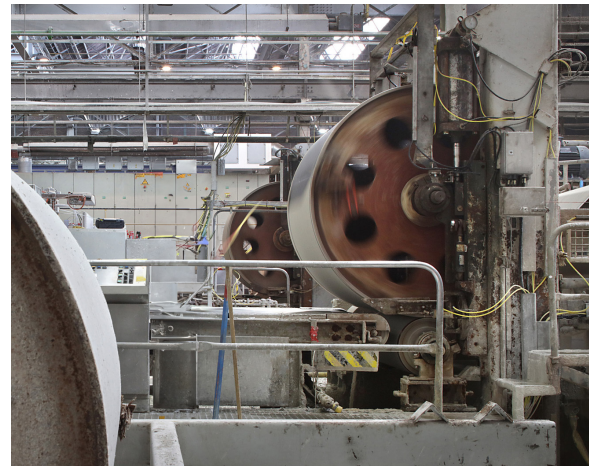
RAINSCREEN FACADE SOLUTIONS

Arch: DOMUS Studio Project SC Sieniawski & Sieniawski



EQUITONE

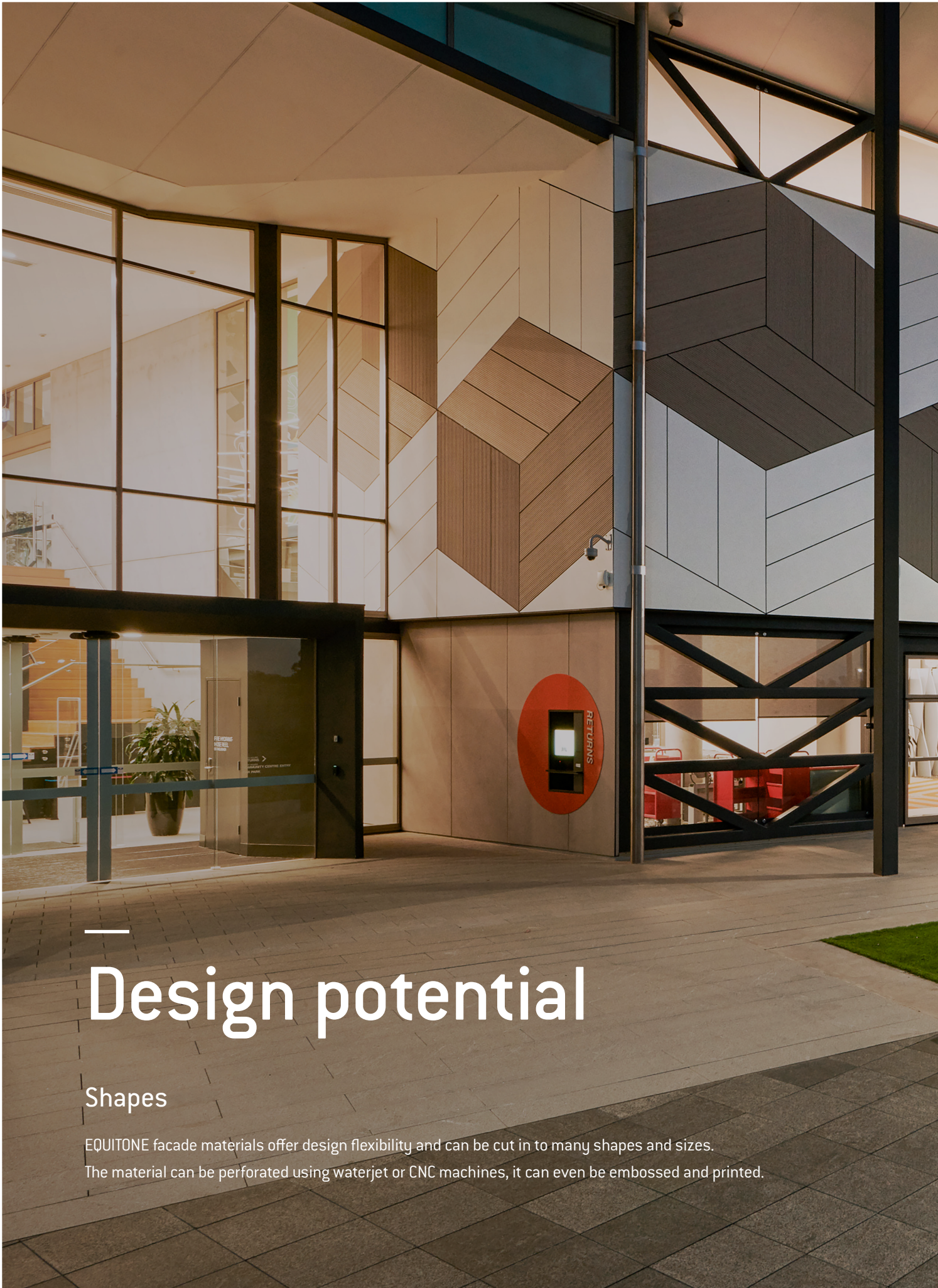
fibre cement facade materials



When Ludwig Hatschek invented fibre cement in the late 19th century, he combined the basic elements of the earth: mineral materials, water, air and fire (heat) in a simple filtration process. He named the resulting material “Eternit”, hinting at the superior durability of this new material. Our parent company, Etex, has been manufacturing fibre cement materials since 1905. The most prestigious incarnation in this proud heritage of unique materials is the EQUITONE facade material range. The Hatschek production process makes each EQUITONE facade panel unique with an individual fibre cement texture.

In the 1950s leading architects such as Walter Gropius pioneered the use of coated fibre cement panels using the ventilated facade (rainscreen) system. Designer Willy Guhl created the famous “loop chair” from 1 piece of fibre cement in 1954. This design still bears witness to the core qualities of the fibre cement base material: thin, light, durable and beautiful. In 1987, Herzog & De Meuron designed the Ricola storage building in Laufen using uncoated fibre cement panels. The resulting shutter facade, which is a reference to the cardboard boxes inside, inspired our company to start the industrial development of raw untreated fibre cement materials.

Today, EQUITONE has a range of through-coloured, untreated fibre cement materials. Leading architects of our time are exploring and transforming the EQUITONE material in remarkable facade designs.



Design potential

Shapes

EQUITONE facade materials offer design flexibility and can be cut in to many shapes and sizes. The material can be perforated using waterjet or CNC machines, it can even be embossed and printed.



EQUITONE

[linea]



[linea]

[tectiva]

[lunara]

[natura]

[pictura]



EQUITONE [linea]

Design

Unique 3D shaped, through-coloured facade material that plays with light and shadow.

Finish

The linear surface highlights the raw inner texture of the core fibre cement material.*

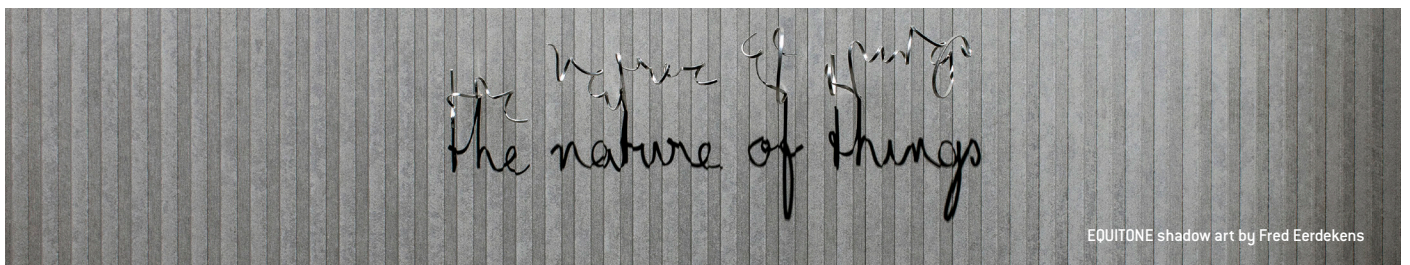
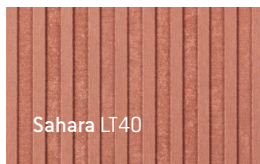
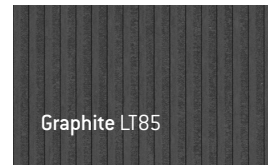
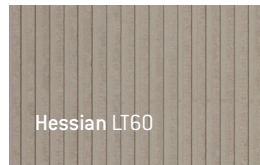
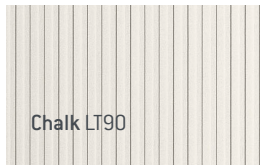
Expression

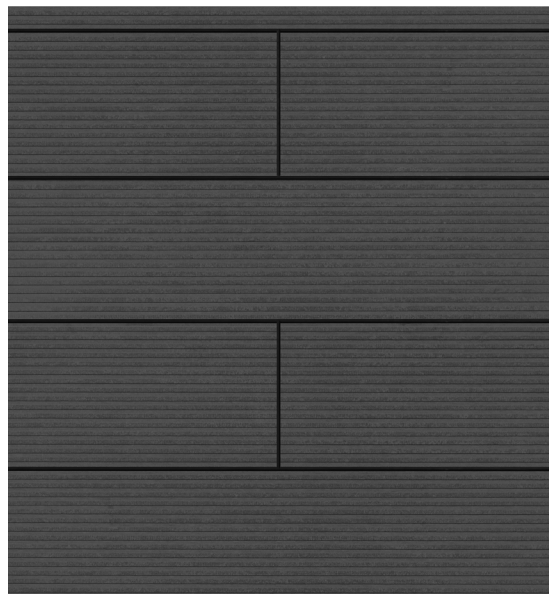
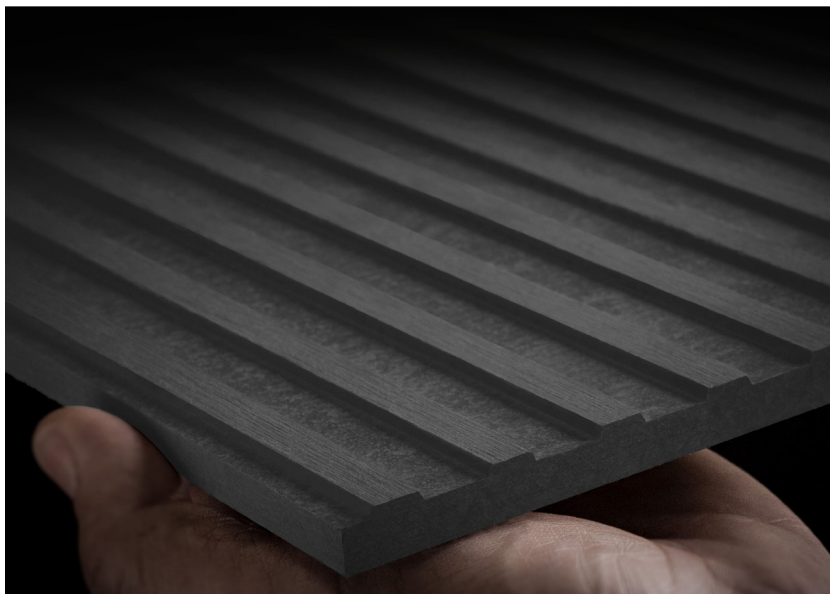
Every moment of the day, the changing angle of the daylight gives the facade material a different aspect.

Thickness	Sheet sizes	Nominal weight	Fire performance classification
10mm	2500 x 1220, 3050 x 1220 mm	16.8kg/m ²	A2-s1,d0

* Naturally occurring white flecks may be visible which adds to the aesthetics of the material

Available in 9 colours





Discover the [linea] range

Scan the QR code for more details and technical specifications

==EQUITONE

[tectiva]





[linea]

[tectiva]

[lunara]

[natura]

[pictura]

EQUITONE [tectiva]

Authenticity

Original through-coloured material with highly expressive fibre cement structure.

Individuality

The production process makes each panel unique in colour, texture and surface.*

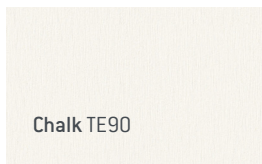
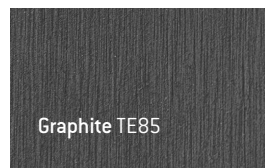
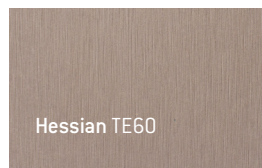
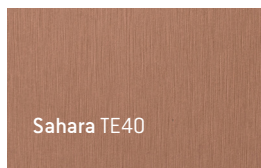
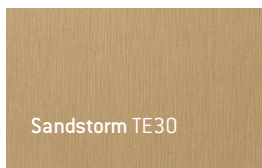
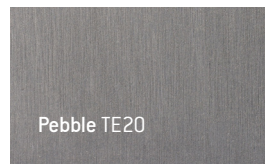
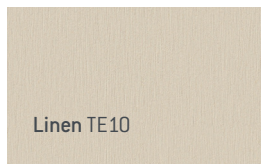
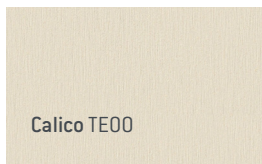
Tactility

Rough, unpolished fibre cement surface with delicate linen touch.

Thickness	Sheet sizes	Nominal weight	Fire performance classification
8mm	2500 x 1220, 3050 x 1220mm	14.9kg/m ²	A2-s1,d0

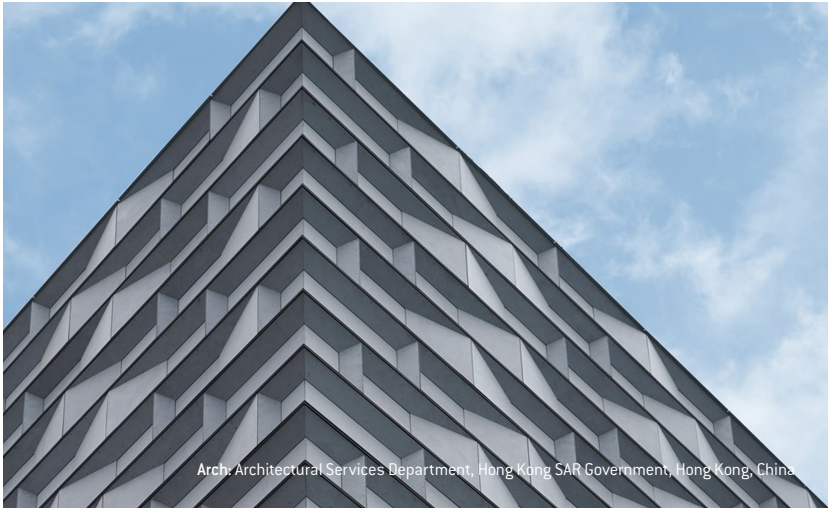
* Naturally occurring white flecks may be visible which adds to the aesthetics of the material

Available in 9 colours

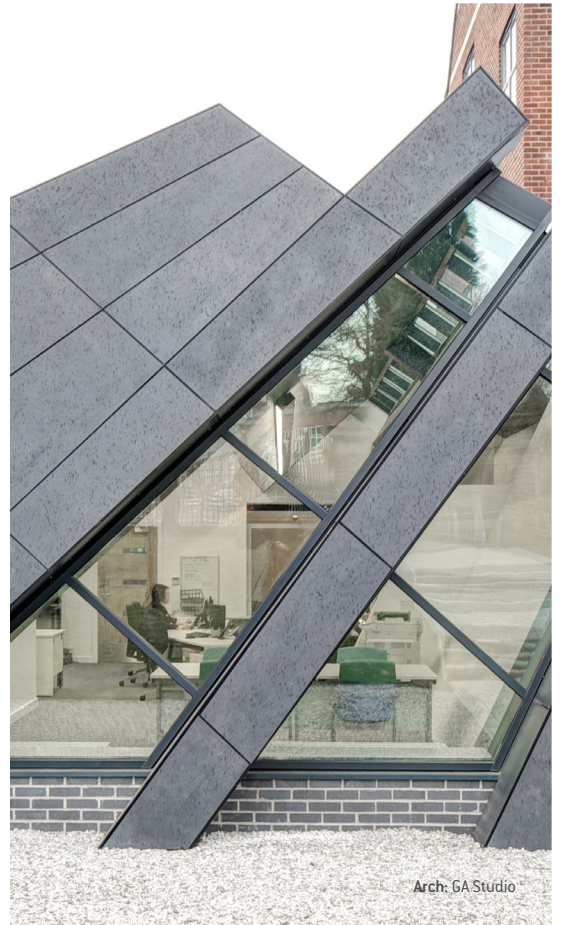




Arch: Pick Everard



Arch: Architectural Services Department, Hong Kong SAR Government, Hong Kong, China



Arch: GA Studio



Arch: Stride Treglown



Discover the [tectiva] range

Scan the QR code for more details and technical specifications

EQUITONE

[lunara]





[linea]

[tectiva]

[lunara]

[natura]

[pictura]

EQUITONE [lunara]

Authentic appearance

EQUITONE [lunara] is a through-coloured fibre cement panel with a surface resembling a lunar landscape that demonstrates the natural quality of fibre cement as a material

Individual interface

The special production process makes each panel unique in terms of its colour, texture and surface, with a pattern that is not repeated.*

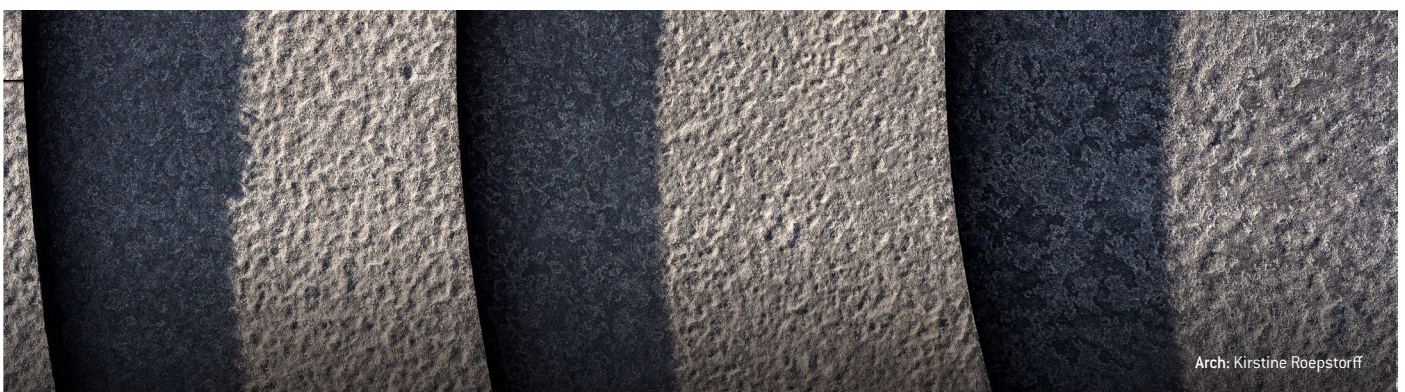
Natural feel

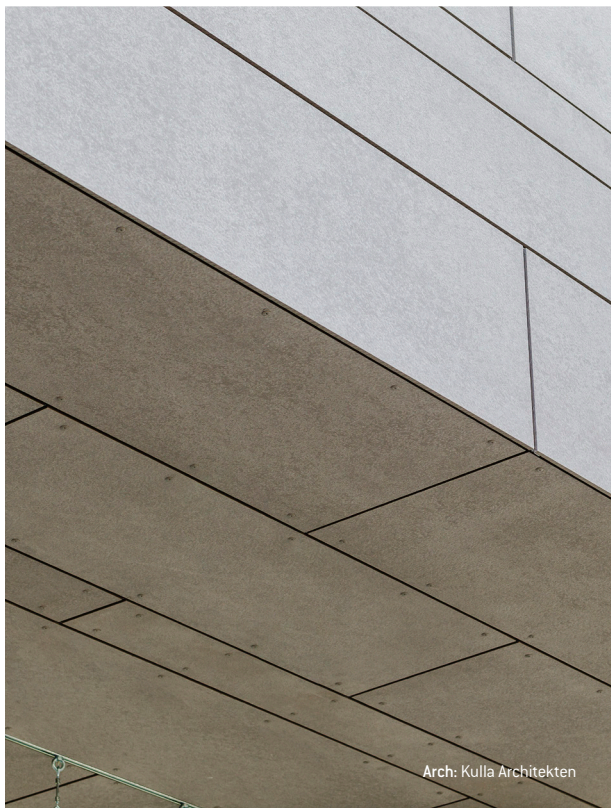
The rough, unpolished surface looks as if it was created naturally and invites you to touch it.

Thickness	Sheet sizes	Nominal weight	Fire performance classification
10mm	2500 x 1220, 3050 x 1220mm	18.6kg/m ²	A2-s1,d0

* The surface may show variations in tone and appearance which adds to the aesthetics of the material.

Available in 2 colours





Discover the [lunara] range

Scan the QR code for more details and technical specifications

EQUITONE

[natura]





[linea]

[tectiva]

[lunara]

[natura]

[pictura]

EQUITONE [natura]

Sophistication

Natural material with clearly visible yet subtle fibre cement matrix, in a range of through-colours.

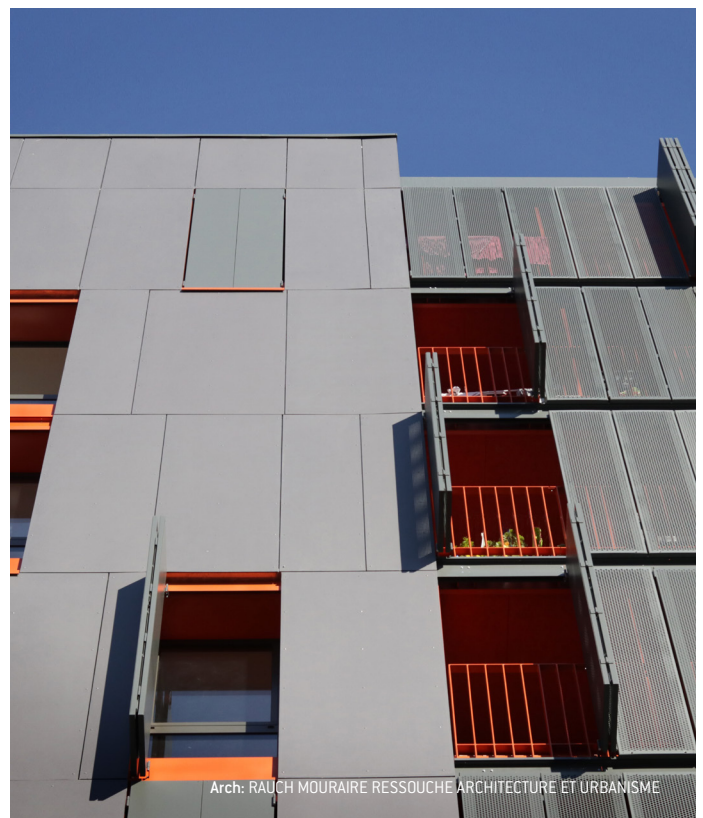
Soft touch

Matt, silk smooth surface finish.

Protection

Transparent protective layer. EQUITONE "PRO" anti-graffiti protection also available.

Thickness	Sheet sizes	Nominal weight	Fire performance classification
8mm	2500 x 1250, 3100 x 1250 mm	15.4kg/m ²	A2-s1,d0
12mm	2500 x 1250, 3100 x 1250 mm	22.8kg/m ²	A2-s1,d0



Available in 27 colours



Discover the [natura] range

Scan the QR code for more details and technical specifications

==EQUITONE

[pictura]





[linea]

[tectiva]

[lunara]

[natura]

[pictura]

EQUITONE [pictura]

Colour

EQUITONE [pictura] offers a selection of contemporary colour coatings.*

Matt surface

Smooth and ultra-matt finish for high class architectural look.

Anti-graffiti

EQUITONE [pictura] is treated with the EQUITONE "PRO" UV coating for everlasting anti-graffiti protection.

Thickness	Sheet sizes	Nominal weight	Fire performance classification
8mm	2500 x 1250, 3100 x 1250mm	15.4kg/m ²	A2-s1,d0
12mm	2500 x 1250, 3100 x 1250mm	22.8kg/m ²	A2-s1,d0

* Also available to order in most RAL colours.





Available in 20 colours

Porcelain PW141	Gunmetal Grey PG241	Matt Black PA041	Parchment PW841
Moonstone PG243	Espresso PA944	Volcanic Red PG341	Deep Purple PG342
Sky Blue PG442	Regency Blue PG443	Navy Blue PG444	Olive PG542
Bright Green PG544	Autumn Green PG545	Teal PG546	Powder Yellow PG641
Antique Yellow PG642	Pale Orange PG742	Fawn Grey PG843	Mocha PG844



Discover the [pictura] range

Scan the QR code for more details and technical specifications



Ventilated facade

Originated in Scandinavia centuries ago, the ventilated facade (rainscreen) technique is now very prominent in areas with demanding climatic conditions.

In the rainscreen system, the outer panel deflects rain and solar heat away from the building. The ventilation space allows air to freely circulate behind the panel, creating a well ventilated and comfortable inner building.

Versatility

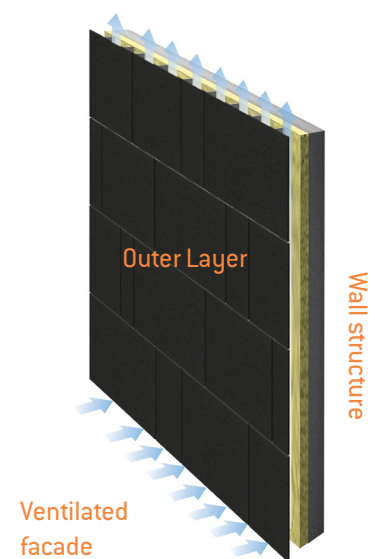
The ventilated facade construction principle combines the capability of curtain wall construction with the creative versatility and adaptability offered by traditional building techniques

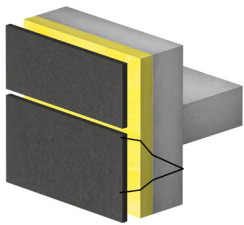
Less is more

A ventilated facade system has minimal thickness and weight, yet it offers maximum performance.

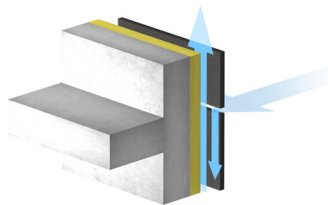
Healthy

The ventilated facade construction principle avoids cold bridges, eliminating condensation and mould growth.

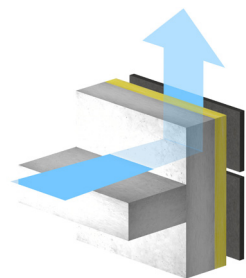




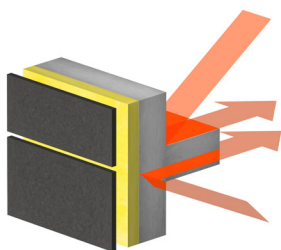
Insulation



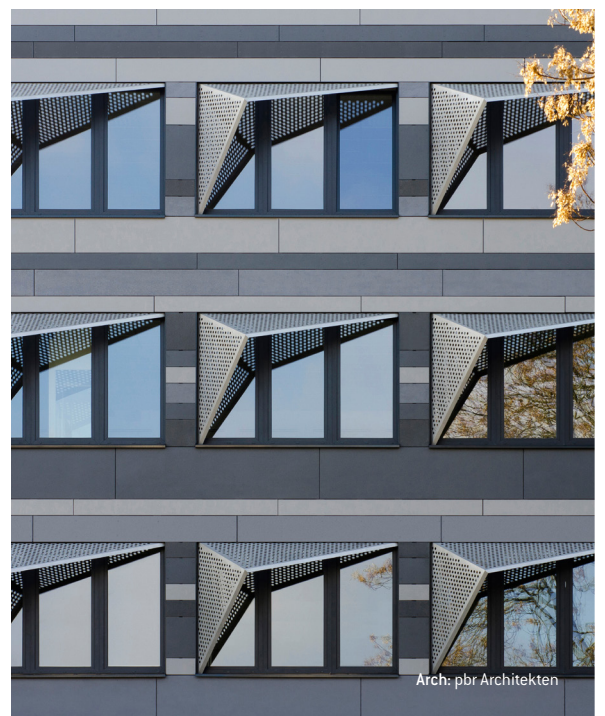
Rainwater removal



Removal of interstitial condensation



Minimisation of thermal bridging



Arch: pbr Architekten



Arch: Stride Treglown

A range of fixing systems are available to meet the variety of EQUITONE facade materials.

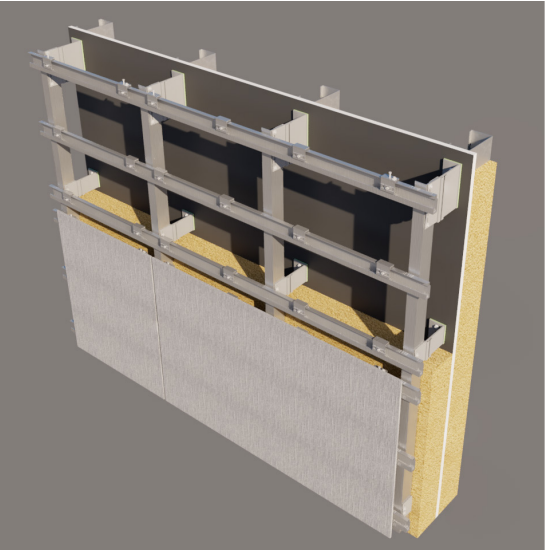
Secret fix systems

The fixing method chosen can have a fundamental and dramatic effect upon the final appearance of the facade. Employing a secret fix method will result in a sheer, smooth facade unobstructed by fixings. In practice, many versions of secret fixing exist, including infill or composite panels.



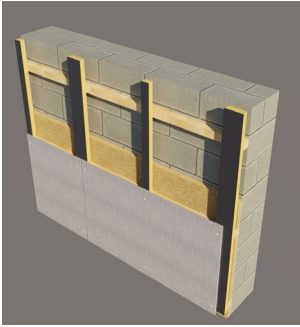
Mechanical secret fix

For facade applications where a smooth unbroken surface is required, a concealed mechanical fixing system can be used. EQUITONE supply specially designed anchors that are fixed to the rear face of the EQUITONE panels. This fixing method is available for all EQUITONE materials.



Arch: TP Bennett

Face fix systems



Timber battens

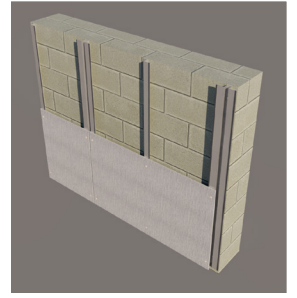
An economical method of application for EQUITONE facade panels is that of mounting on a timber framework using colour coded Uni-screws.

Unless specific fire performance requirements or irregularities to the substrate are encountered (where other adjustable systems are employed), timber battens will provide an economical and speedy installation.



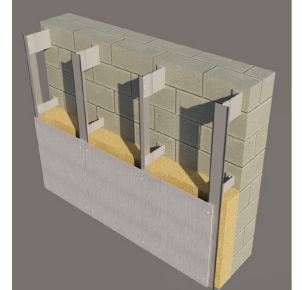
Omega and Zed

As an alternative to timber battens, particularly where there is a specific requirement for non-combustible frameworks, a lightweight aluminium framework can be used. These can be fixed either directly to a concrete, brick or block wall, or to a purpose-designed rail system. EQUITONE facade materials can then be rivet-fixed to the Omega and Zeds.



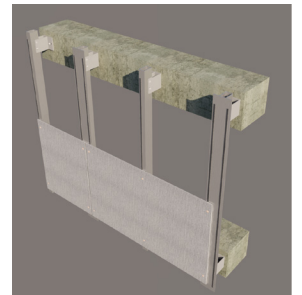
Helping Hand

An aluminium frame fixing system able to provide adjustable void depths to accommodate insulation, and able to overcome irregularities in the supporting substrate.



Floor Spanning System

A highly adjustable system allowing for irregularities in substrate surface, and is ideal where poor quality infill material on existing buildings dictates that fixings can only be secured at floor slab positions.





This publication is based on the latest data available at the time of printing. Due to product changes, improvements and other factors, the Company reserves the right to change or withdraw information contained herein without prior notice. For specific applications users should refer to the Technical Advisory Team and relevant Standards and Codes of Practice for guidance.

The photography shown in the document should not necessarily be taken as recommendations of good practice. The printing process restricts the exact representation of colours. For true colour reference, please request product samples.



Arch: Stride Treglown








 **EQUITONE**
Fibre cement facade materials


equitone.co.uk

+44 (0)1283 501555

infouk@etexgroup.com

Etex [Exteriors] UK, Wellington Road, Burton-upon-Trent,
Staffordshire, DE14 2AP

 @equitoneuk

 equitone uk

Contact Us Today



Arch: euroterra GmbH architekten ingenieure