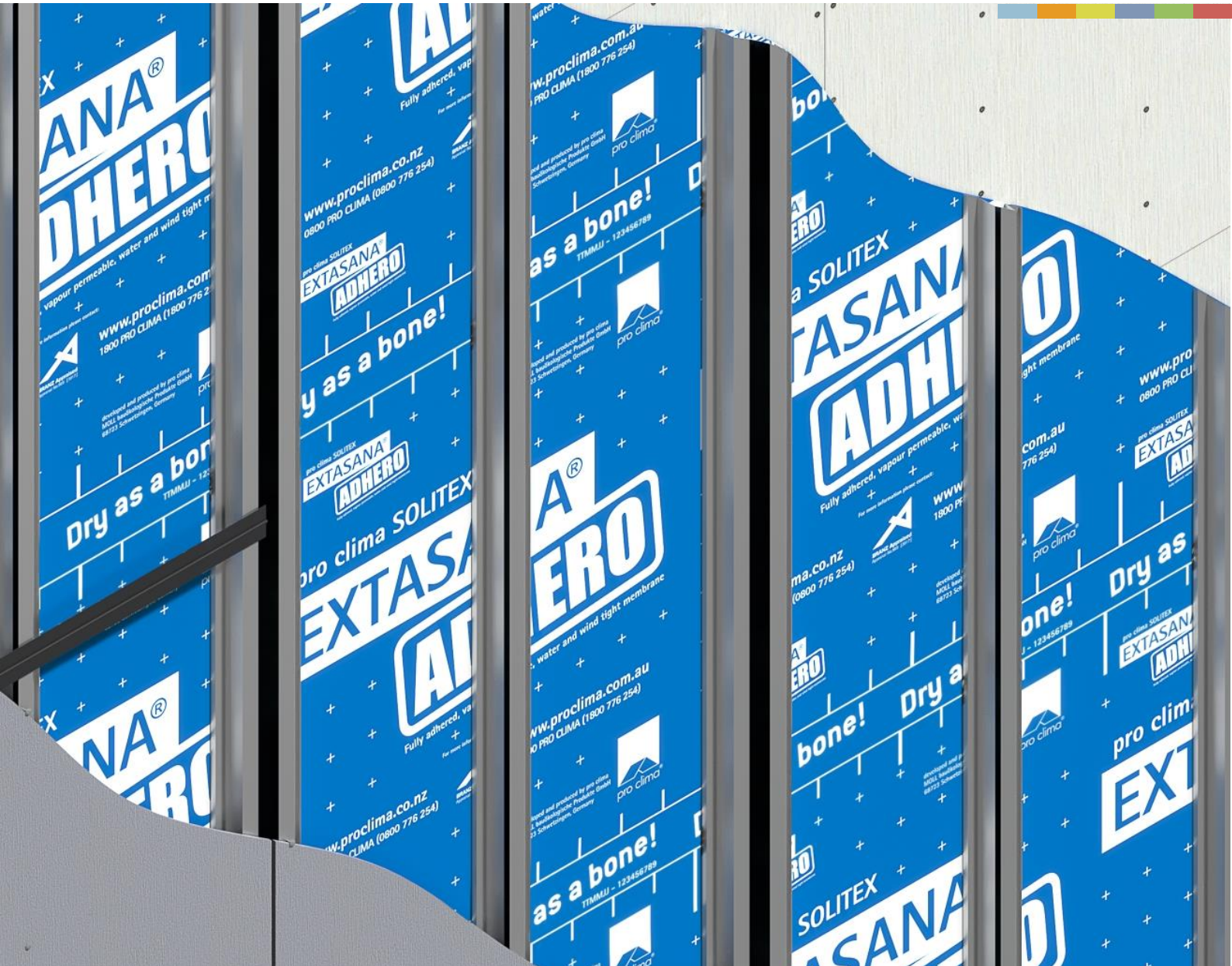




SOLITEX EXTASANA ADHERO®

Application Guide – EQUITONE & CEDRAL



Self-Adhesive Weather Resistive Barrier for EQUITONE & CEDRAL Façade System





IMPORTANT

The release film is split into two parts that are 250 mm and 1250 mm wide. The 250 mm-wide application zone is stuck in place first. To ensure that the wider release film can be removed more easily later on, pull off a corner of this film and fold it over. This will then be easier to grip later on.



PRESSFIX XL
A large malleable plastic tool for applying pressure to pro clima SOLITEX EXTASANA ADHERO® to ensure long term durable bonding.



1
Check Substrate
Check substrate to ensure it is even and free from any protrusions, nails, screws etc. This will not be able to be rectified easily after membrane adhesion.



2
Calculate and Mark Guideline
Decide on the position of the first membrane and mark this on the wall. Determine the membrane length.



3
Line the Internal Corners
For interior corners, cut a strip of ADHERO that is at least 400 mm in width and adhere it in place with equal parts on each of the walls.



4
Line the External Corners (if necessary)
If necessary, repeat for exterior corners. Alternatively, TESCON EXTORA® can also be used at internal or external corners.



5
Cut The Membrane and Roll Out
Cut the membranes down to required length. Markings make your work easier. Roll out the cut strips such that the release film faces outward.



6
Remove Split Release Film
The 250 mm-wide application zone is stuck in place first. Pull off a corner of this film and fold it over. This will then be easier to grip later.

SYSTEM

Weather Resistive Barrier

Wall



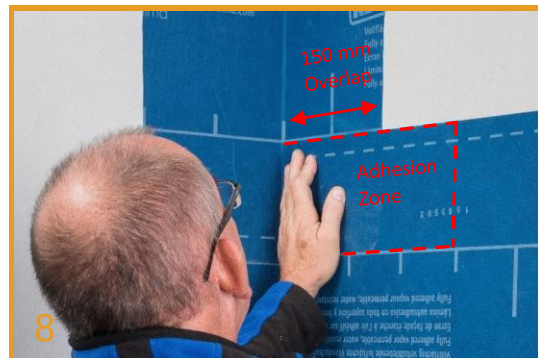
IMPORTANT

Air bubbles and voids should be avoided during application by using the PRESSFIX XL to smooth the SOLITEX EXTASANA ADHERO® into place working progressively along the membrane.

In some cases if the substrate material heats up in the sun it is possible that the substrate off gases causes small bubbles to appear even through the membrane was installed smooth. This does not affect the functionality, longevity or durability of the product.



Apply Membrane to Align With Internal Corner
Remove approx.. 200 – 300 mm of the release film of the upper application zone. Position the membrane at the marking (on the wall) and attach to the wall.



Overlap Corner Strip
Adhere only the 200 – 300mm released part of the application zone. Ensure that the membrane covers at least 150 mm of the corner strip.



Apply Membrane Without Internal Corner
To form the corner, guide at least 150 mm of the membrane around the corner. Apply pressure and smooth ADHERO using PRESSFIX XL.



Apply Membrane Without External Corner
Wrap the SOLITEX EXTASANA ADHERO® at least 150 mm around external corners. Apply pressure and smooth the SOLITEX ADHERO using PRESSFIX XL.



Roll Out the Membrane
Continue rolling out the first membrane aligning with the marked line. Gradually remove the release film of the application zone and adhere in place.



Remove Film
Grip the wide release film by the previously folded corner and pull it off. Smooth the tape firmly into place using PRESSFIX XL.



IMPORTANT

TESCON EXTONSEAL® is required to be stretched at the window corners. Overstretching TESCON EXTONSEAL® can lead to thinning and tearing.



TESCON EXTONSEAL® APPLICAITON



PRESSFIX is a malleable plastic tool for applying pressure to pro clima Adhesive TESCON® Tapes to ensure long term durable bonding.



13 Adhere the Entire Section
Smooth the membrane into place using PRESSFIX XL adhering the membrane to the substrate, avoiding air bubbles and folds. Apply pressure for good adhesion.



14 Overlap the Membrane Layers
Apply all the remaining membranes - one by one - horizontally in an overlapping, waterproof manner. The minimum overlap for membranes is 150 mm.



15 Alternative: Vertical Application
Attach ADHERO at the highest point. Gradually remove the release film strips by pulling them downward. Apply pressure using PRESSFIX XL.



16 Cut Out Window Openings
The membrane is first adhered over any window openings. To cut out the opening, cut the membranes as indicated with the red line using a cutter.



17 Stick Membrane to Reveal
Once ADHERO has been cut out, fold it onto the reveal and adhere it in place. Smooth the membrane firmly into place using PRESSFIX XL.



18 Apply Sub Sill Flashing - TESCON EXTONSEAL®
TESCON EXTONSEAL® Sill Tape should extend minimum 100 mm up the jambs. The corners of the TESCON EXTONSEAL® are stretched & adhered into place.

SYSTEM

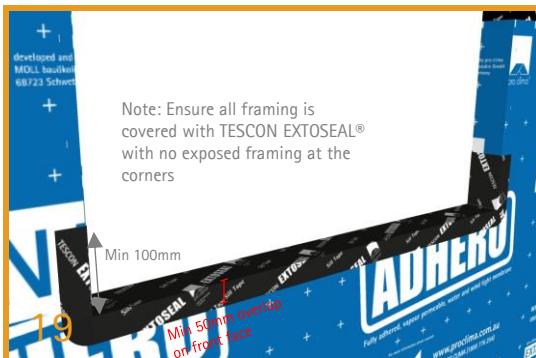
Weather Resistive Barrier

Wall



IMPORTANT

Avoid hollows or bubbles in TESCON EXTONSEAL® by using PRESSFIX. Stretch the tape sufficiently in the corners and adhere in place in a manner free of tension. Too much tension can result in pull back over time.



Applying TESCON EXTONSEAL® Sill Tape

TESCON EXTONSEAL® Sill Tape should extend minimum 100mm up the jambs. The corners of the TESCON EXTONSEAL® are stretched and adhered into place.



TESCON EXTONSEAL® - Corner Application

Allow TESCON EXTONSEAL® to protrude by at least 50 mm at the front of the wall and adhere at least 150 mm of this tape into the reveals.



TESCON® ADHISO WS ensures a surface suitable for adhesion of sealants compatible with aluminum.



Window Corner Seal With TESCON EXTONSEAL®

At corners TESCON EXTONSEAL® should extend at least 100mm in each direction. For wider frames the 200mm wide TESCON EXTONSEAL® should be used.



Window Wet Seals – Front Seal

TESCON® ADHISO WS is applied to the jambs and header to align with the back and front seals according to the window opening detailing.



Continuous TESCON® AHISO WS Back Seal

TESCON® ADHISO WS back seal should be continuous around the entire window. The front seal will be continuous on the jambs and header only.



Repair Abrasions Using TESCON EXTORA

Adhere TESCON EXTORA® tape in a suitable width to cover any defects in ADHERO. Smooth adhesive joints firmly using a PRESSFIX.



IMPORTANT
 ORCON® CLASSIC is required when sealing to uneven masonry surfaces. If the masonry surface is clean and smooth then the SOLITEX EXTASANA ADHERO® can be directly adhered and pressure applied using the PRESSIFIX.

For slab / soffit junctions, TESCON® EXTORA flashing tape may alternatively be used for sealing to these interfaces. A minimum 30 mm overlap with concrete as well as SOLITEX EXTASANA ADHERO® is required.



Repair Using SOLITEX EXTASANA ADHERO®
 As an alternative, defects can also be repaired by adhering a piece of ADHERO onto them. Smooth adhesive joints firmly using a PRESSIFIX.



Connect to Foundation
 When sealing to rough substrates like concrete, apply a bead of ORCON® CLASSIC at a thickness of at least 5 mm. Do not press the adhesive completely flat.



Connect to Straight Slab Edges
 ADHERO is finished by adhering it onto the concrete edge. Use ORCON® CLASSIC if necessary as per step 26..



Slab Step Down - Edge Base Detail Connection
 ADHERO is finished by adhering onto the concrete edge (using ORCON® CLASSIC if necessary). The flashing is fixed with a self-taper and over taped.



Preparing The Soffit
 Porous concrete or masonry may need to be primed with TECON® PRIMER RP using a brush.



Weatherproof Seal to Soffit
 SOLITEX EXTASANA ADHERO® is applied to overlap onto the soffit by at least 30mm ensuring it does not protrude past the proposed finished cladding surface.

SYSTEM

Weather Resistive Barrier

Wall



IMPORTANT

ROFLEX grommets come in various sizes and it is important the correct size for the pipe is selected and installed to ensure a weathertight seal.



Cutting for Penetrations

Cut a hole of suitable size to fit the diameter of the pipe.



Push Pipe Through

The pipe is pushed through hole with sufficient length to fit ROFLEX over.



Fit ROFLEX Over The Pipe

Place ROFLEX over the pipe in a diamond orientation. It should be a tight fit over the pipe. The pipe should be smooth and clean.



Start TESCON EXTORA® Application at Bottom

Start to apply TESCON EXTORA® 60 mm width at the bottom edge and apply pressure with the PRESSFIX tool.



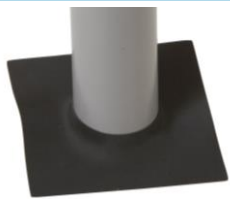
TESCON EXTORA® Application Anti-Clockwise

Apply TESCON EXTORA® around the whole grommet working anti-clockwise to ensure the top layers overlap the lower layers.



TESCON EXTORA® Overlap

At the TESCON EXTORA® tape overlaps ensure the top layer fully covers the end of the TESCON EXTORA® layer below for optimum weathertightness.



ROFLEX

Sealing grommet made of strong and highly flexible EPDM for rapid and permanent weathertight feedthroughs for pipes.



IMPORTANT

TESCON® NAIDECK is a butyl self-sealing strip. Sealing material is pulled into the hole created when a screw is fitted. This is particularly important for high pressure systems using timber battens over the studs.



TESCON® NAIDECK self-sealing strip for superior weather-tightness when using timber battens over the studs.

		SOLITEX EXTASANA ADHERO	TESCON EXTORA®	TESCON EXTORA® PROFIL	TESCON EXTOSEAL®	ORCON® NAIDECK	CONTEGA® CLASSIC	KAPLEX® mono/duo	KAPLEX® post	ROFLEX	DUPLIX	TESCON® PRIMER RP
Timber, OSB, Plywood	dirty			✓								✓
	clean	✓	✓	✓	✓	✓						✓
Plaster board	clean	✓	✓	✓	✓	✓						✓
Paint primers		✓	✓	✓	✓	✓	✓					✓
AEROSANA® VISCONN	dry / clean	✓	✓	✓	✓	✓	✓	✓	✓	✓	✓	✓
PIR Polysiocanurate	on foil	✓	✓	✓	✓	✓	✓	✓	✓	✓	✓	✓
	on PIR											
XPS Extruded Polystyrene	clean	✓	✓	✓	✓	✓		✓	✓	✓	✓	✓
EPS Expanded Polystyrene	clean	✓	✓	✓	✓	✓		✓	✓	✓	✓	✓
Expanding foams	dry											
Cement/Gypsum plaster	smooth	✓	✓	✓	✓		✓	✓	✓	✓	✓	✓
	rough						✓					✓
	friable											✓
Acrylic plaster	smooth	✓	✓	✓	✓		✓	✓	✓	✓	✓	✓
	rough						✓					✓
Steel	galvanized	✓	✓	✓	✓		✓					✓
	bright	✓	✓	✓	✓		✓					✓
	painted	✓	✓	✓	✓		✓					✓
Aluminium	clean	✓	✓	✓	✓		✓				✓	
Brickwork	rough						✓					✓
	friable											✓
Dampcourse	aluminium						✓					✓
	polyethene						✓					✓
Chemical tremite barrier	blue	✓	✓	✓	✓		✓	✓				✓
	orange	✓	✓	✓	✓		✓	✓				✓
Concrete	smooth	✓	✓	✓	✓		✓	✓	✓	✓	✓	✓
	rough						✓					✓
Fibre cement	clean	✓	✓	✓	✓	✓	✓	✓	✓	✓	✓	✓
	friable											✓
Window Frames	aluminium	✓	✓	✓	✓		✓	✓				✓
	PVC	✓	✓	✓	✓		✓	✓				✓
	timber	✓	✓	✓	✓		✓	✓				✓
Cables	flat	✓	✓	✓	✓		✓		✓			✓
	round	✓	✓	✓	✓		✓		✓			✓
Pipes / ductings		✓	✓	✓	✓		✓			✓		

Notes:

- Surface should always be dry.
- TESCON® PRIMER RP is always recommended for mineralic surfaces.

37

pro clima SOLITEX EXTASANA ADHERO® Adhesion Matrix

SOLITEX EXTASANA ADHERO® is compatible with all pro clima Adhesive Tapes and Sealants. Optimum weatherproofing is achieved when wind tight connections are made between SOLITEX EXTASANA ADHERO® and other building materials and components. The table above provides guidance on the use of pro clima Adhesive Products when used to connect the SOLITEX EXTASANA ADHERO® system with other common building materials.



TESCON EXTORA®
Pressure sensitive adhesive tape for connections, details and patching the SOLITEX EXTASANA ADHERO® system.



TESCON EXTOSEAL®
Flexible flashing tape for use around window and door openings as part of the SOLITEX EXTASANA ADHERO® system.



TESCON® NAIDECK mono patch
Sealing patches for use at bracket mounts and point fixings.



TESCON® ADHISO WS
Pure aluminium tape for wet seal connections to TESCON EXTOSEAL® and SOLITEX EXTASANA ADHERO®.



Sealing Cable Penetrations

Place a KAFLEX sealing gasket over cables and adhere it to the membrane. Smooth adhesive joints firmly with a PRESSFIX.



Nail/Screw Sealing

If brackets or similar parts are to be attached to the wall, use TESCON EXTOSEAL® patches for nail/screw sealing.

Recommendations and requirements

- SOLITEX EXTASANA ADHERO®, TESCON EXTORA® and TESCON EXTOSEAL® form a continuous system. Any damage or tears should be patched.
- Although SOLITEX EXTASANA ADHERO® provides a level of weather protection prior to cladding it is not intended as an early close in system and is designed and tested in combination with EQUITONE / CEDRAL cladding systems to provide weathertightness up to the pressure thresholds specified by Etex Exteriors ANZ.
- The SOLITEX EXTASANA ADHERO® has up to 180 days UV exposure limit prior to cladding.

Certification



NZ ONLY



Your local support

Pro Clima New Zealand
04 589 8460 | 09 892 9900 | 03 327 4925
Technical: support@proclima.co.nz
General: welcome@proclima.co.nz
www.proclima.co.nz

Etex Exteriors ANZ
[+61 3 9988 2290](tel:+61399882290)
info.australia@equitone.com
www.equitone.com
info.anz@cedral.world
www.cedral.world

