



 **EQUITONE**®  
Fibre cement facade materials



# EQUITONE fibre cement facade materials

When Ludwig Hatschek invented fibre cement in the late 19th century, he combined the basic elements of the earth: mineral materials, water, air and fire (heat) in a simple filtration process. Our mother company, Etex, has been manufacturing fibre cement materials since 1905. The most prestigious incarnation in this proud heritage of unique materials is the EQUITONE® facade material range. The Hatschek production process makes each EQUITONE facade panel unique with an individual fibre cement texture. Most EQUITONE facade materials are through-coloured with a raw, unfinished character.

In the 1950s leading architects such as Walter Gropius pioneered the use of coated fibre cement panels using the ventilated facade (rainscreen) system. Designer Willy Guhl created the famous "loop chair" from a single piece of fibre cement in 1954. This design still bears witness to the core qualities of the fibre cement base material: thin, light, durable and beautiful. In 1987, Herzog & De Meuron designed the Ricola storage building in Laufen using uncoated fibre cement panels. The resulting shutter facade, which is a reference to the cardboard boxes inside, inspired our company to start the industrial development of raw untreated fibre cement materials.

Today, EQUITONE materials offer a palette of possibilities. Leading architects of our time are exploring and transforming the EQUITONE materials in remarkable facade designs.





# Giving material a second life

## Our 2030 ambitions

At EQUITONE, we dedicate ourselves to reuse and recycle all our materials, giving them a second life. With your help, we want to take it one step further and rethink the way they are designed and used, reducing our natural resource consumption and cutting out waste.

### Light-impact materials

Minimising their environmental footprint throughout their entire life cycle.

### Zero waste to landfill

Keeping our materials in use and out of landfill.

## The circular potential of fibre cement cladding

Made of water, Portland cement, cellulose and natural minerals, our materials are the perfect building blocks for a circular construction industry.



Recyclable



Low maintenance



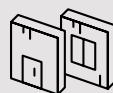
Lightweight



Low material usage/m<sup>2</sup>



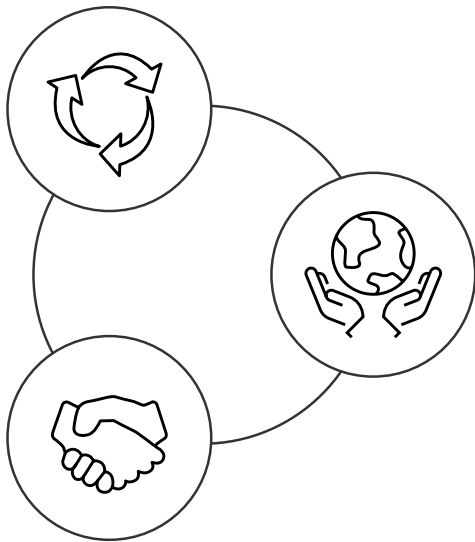
Durable (+50 years)



Modular

## Our 3 areas of focus:

How we want to go from long life and lightweight to light impact and circular by design.



### Circular design

Designing our materials as a modular system that is easy to dismantle, repair and rebuild – making sure they can be reused and recycled over and over again.

### Light-impact construction

Reducing our footprint across the value chain to create materials that are built to be light-impact.

### Radical collaboration for lasting change

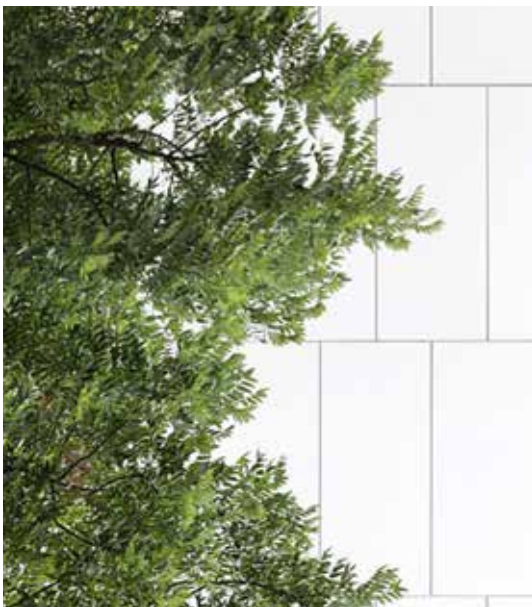
Breaking down industry silos to eliminate the total footprint of our materials – not just in production but throughout their entire life cycle.



180 grad Architekten, Heerbrugg, Switzerland

# Five compelling reasons to opt for EQUITONE rainscreen facade solutions

Discover why EQUITONE is your premier partner for innovative ventilated facade projects. From enduring durability to unmatched design flexibility, expert services, sustainability, and safety, each aspect reflects a commitment to responsible excellence, transforming your architectural aspirations into enduring realities.



Brewster Hjorth Architects, Sydney, Australia





## Sustainability

EQUITONE takes the lead in environmental excellence, offering a sustainable framework that will contribute to the success of your future projects:



- > Cradle to Cradle Certified® Bronze\*\*
- > 100% recyclable
- > Low material usage/m<sup>2</sup>
- > Modular design
- > Lightweight construction
- > Ease of disassembly
- > Low maintenance
- > No harmful gas emissions



## Durability

Designed for strength and reliability, EQUITONE panels, seamlessly installed on the facade using a rear-ventilated curtain system, offer:

- > Over 50 years of longevity
- > Anti-graffiti protection\*
- > Resistance to extreme temperatures and frost
- > Exceptional water resistance
- > Chemical resistance
- > Complies with AS/NZS2908.2



## Design flexibility

Empower your design journey with EQUITONE's flexible solutions:

- > Customizable sizes and shapes
- > Perforation, milling, and printing options
- > Resilience against various living organisms
- > Accommodating special applications, including curved walls, roofs, interiors, and brise soleil
- > Vertical, horizontal, or angled layouts
- > Random or staggered patterns



## Expert services

Ease through your daily challenges at every stage of your architectural project with the expert services offered by EQUITONE:

- > Over 120 years of experience
- > Expert consultations available at every project stage
- > Access to online technical resources
- > BIM object support
- > Regular workshops with architects to enhance your experience



## Safety

Experience peace of mind and unparalleled safety with EQUITONE, where every detail is crafted to meet and exceed the highest industry standards:

- > EN 13501 fire reaction standard at A2-s1,d0 level
- > EN 12467 Class 4 strength classification
- > No harmful gas emissions
- > Deemed non combustible (C2D10(6)(d) and H3D2(1)(d) of the NCC 2022 Volume 1 and 2, respectively)
- > Classified as Type 'A' cladding material in accordance with the Verification Method C/VM2 of the NZBC
- > Classified as Group 1 and Group 1-S material for internal wall and ceiling linings as per NCC and NZBC, respectively

\* Applicable to: natura PRO, pictura and inspira.

\*\* Applicable to: natura, natura PRO, tectiva, lunara, lines, pictura.

# Design potential

EQUITONE facade materials offer unparalleled design flexibility. The fibre cement material is through-coloured, which means the surface displays the inner texture and colour of the core fibre cement material. No matter what facade design options you explore, the through-coloured materials can be transformed into crisp, monolithic facade details.

EQUITONE facade materials come in a maximum panel size of 1.22 x 3.05m and 1.25 x 3.10 m depending on the finish and can be transformed into any size or shape using standard tools in the workshop or on site. The material can be transformed into any size or shape using standard tools in the workshop or on site. The material can be perforated using waterjet or CNC machines: large or very small cuts can be made: it can even be embossed and printed. Some designers have used it for interiors or furniture. The through-coloured material allows you to achieve flawless intricate details.



AR-TE, Leuven, Belgium



Regina Schineis, Augsburg, Germany





Broissin, Mexico City, Mexico



Noma Studio, Perth, Australia



WAstrid Bornheim, Berlin, Germany



1100 Architekten Riehm + Piscuskas BDA  
Frankfurt am Main, Germany

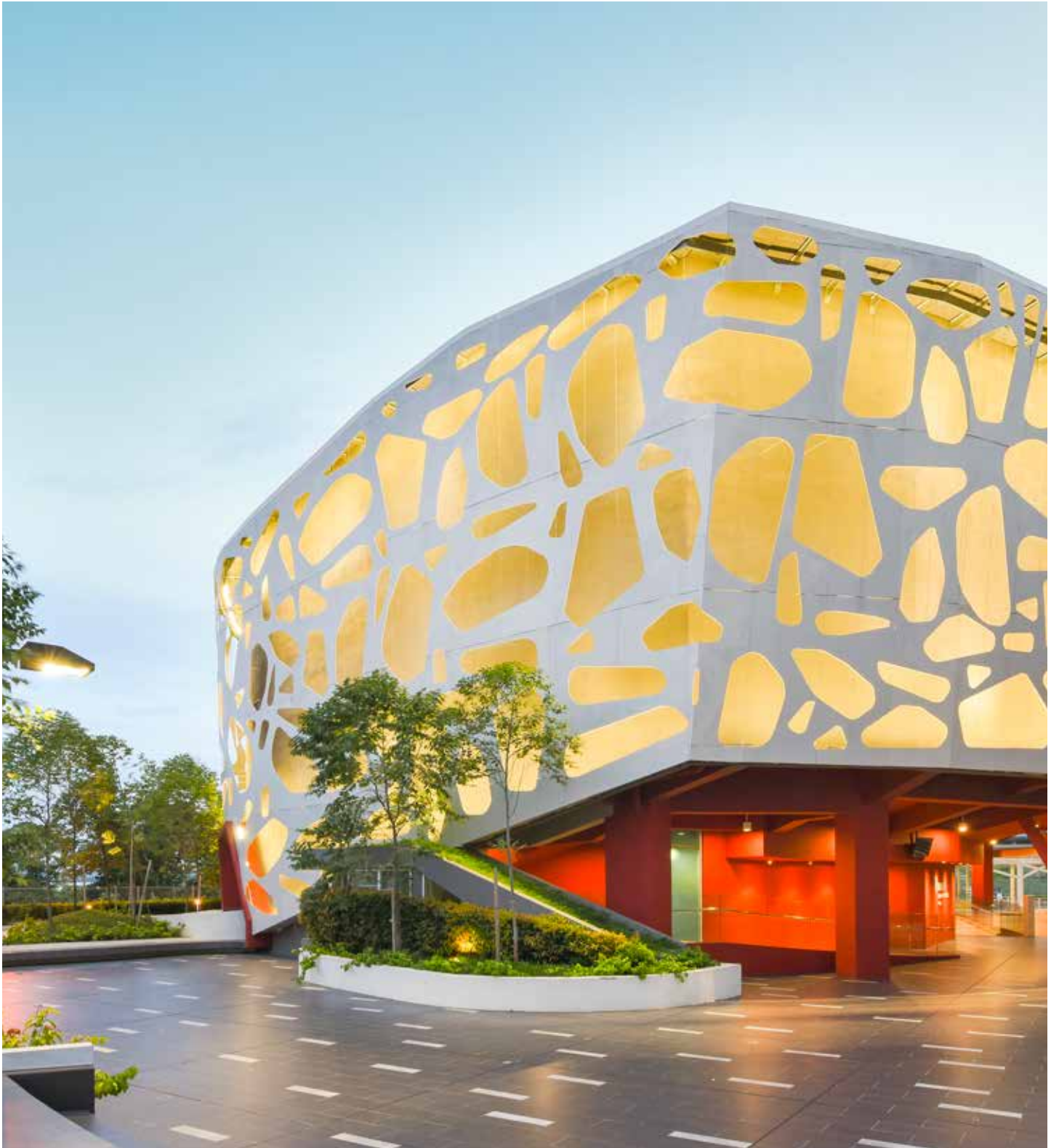


Architectural Services Department,  
Hong Kong SAR Government, Hong Kong, China



KLE Freie Architekten BDA  
Kirchheim unter Teck, Germany





NWKA Architects Sdn Bhd  
Puchong, Malaysia



# Empowering your creativity

**From the material's rawest  
expression to your own inspiration,  
your only limit  
is your imagination.**

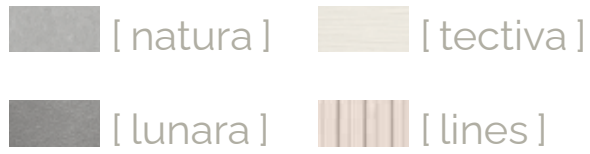
The range begins with the grey and subtle authenticity of two natural fibre cement materials, Natura and Tectiva. It continues with progressive degrees of mechanical surface modifications in Lunara and Lines. (The Minerals)

Next, the Pictura subset brings a range of colours to your facade designs. (The Colourfuls)

Finally, the impressions of nature in the Inspira range and artistic graphical surfaces with designs created with architects for architects, offer you endless creative options. (The Graphicals)

## The Minerals

Embrace natural and authentic elegance, explore our earthly mineral-tone panels



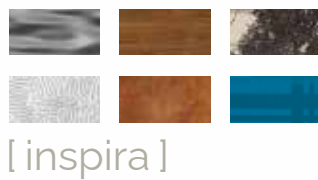
## The Colourfuls

Awaken your facade: discover our vibrant palette for a colourful and original aesthetic



## The Graphicals,

Dive into a world of unlimited visual. Versatility with wood, rust, concrete, stone and nature-inspired graphic designs



# The Minerals







# EQUITONE [ natura ]

**EQUITONE [ natura ]** is a through-coloured facade material. It has a sleek and refined surface with visible fibres randomly distributed throughout. Optional Natura PRO finish is also available with a graffiti protection and is particularly scratch-resistant.

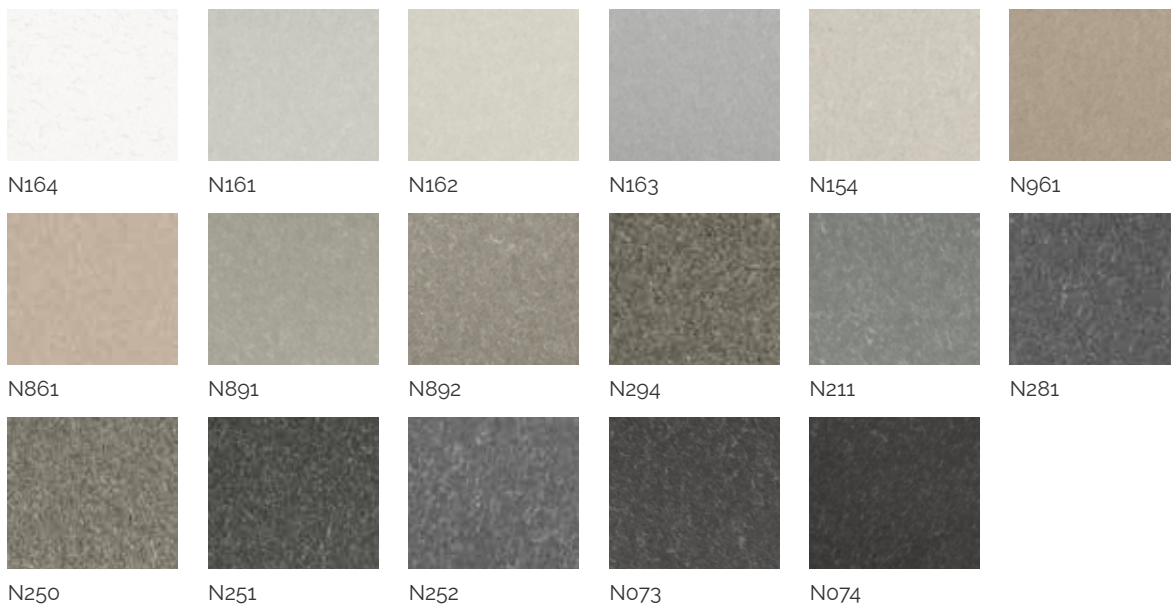
**Touch:** Matte, silk, smooth surface finish.

**Visual:** Fibres distributed randomly like the Milky Way, refined, precious.

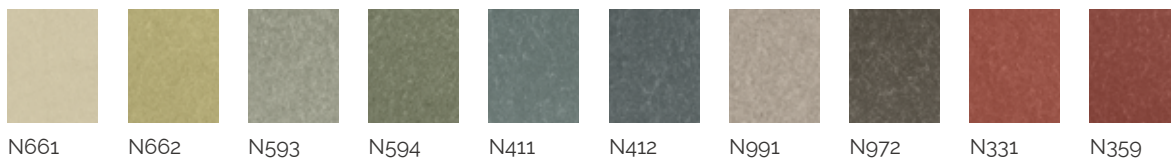
Thickness	Width	Lengths
8 - 12 mm	1 250 mm	2 500 - 3 100 mm

AVAILABLE IN 27 COLOURS:

## THROUGH-COLOURED



## SPECIAL COLOURS

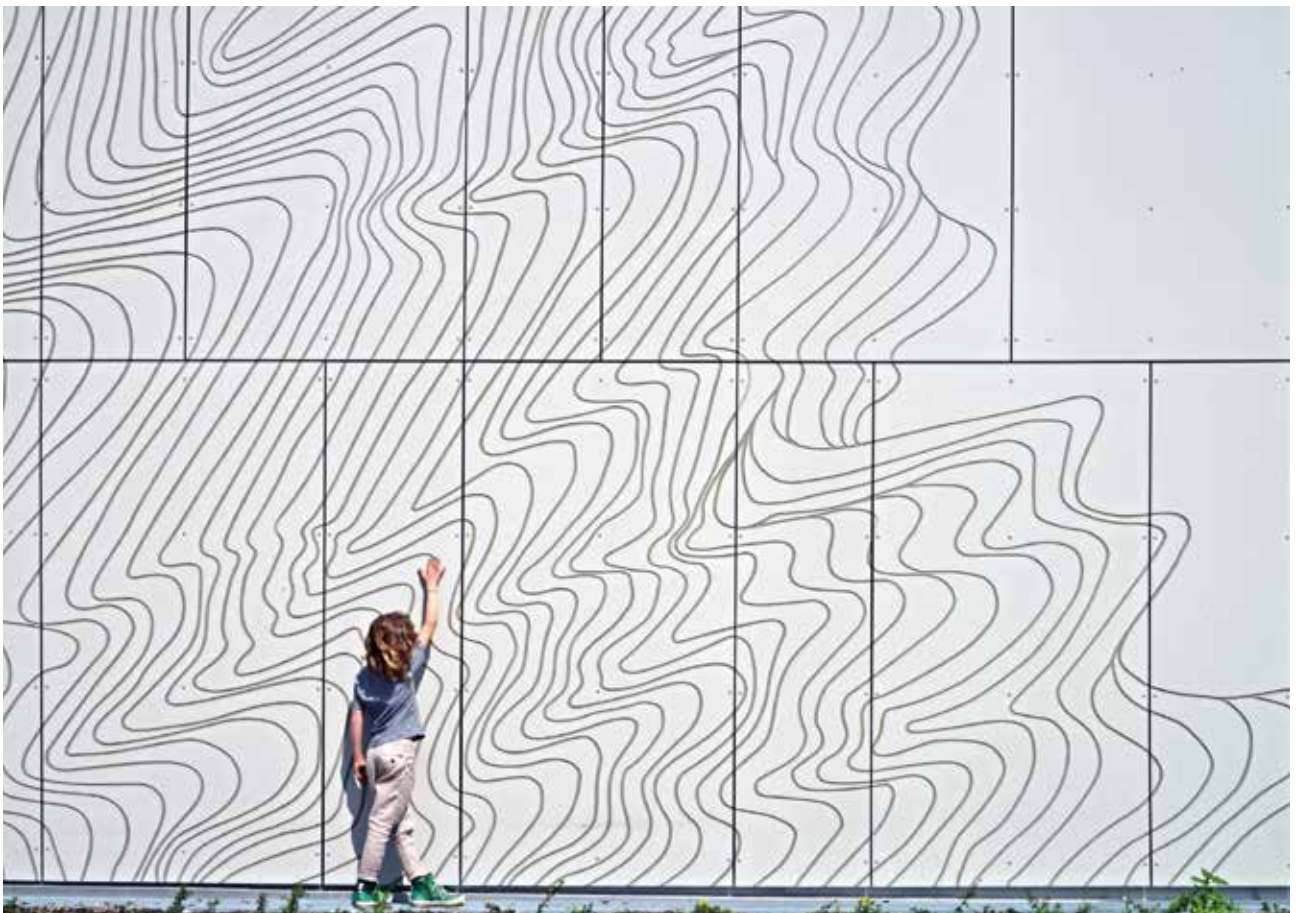


Other colours available on request, subject to minimum order quantities.



WEBBPLUS  
Melbourne, Australia





Spaces Architects and Urban Planners GmbH  
Munich, Germany



foundation 5+ architekten BDA, Germany; Foitzik Krebs Spies Partnerschaft mbB;  
SPRENGWERK, Architektur und Sanierung, Germany



# EQUITONE [ tectiva ]

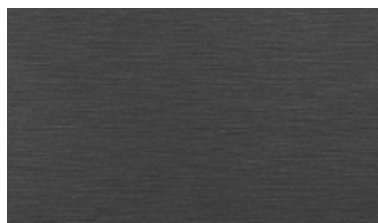
**EQUITONE [ tectiva ]** is a through-coloured facade material, characterised by a sanded surface. Every panel is unique, strongly expressing the raw texture of the core fibre cement material.

**Touch:** Fine sanding lines.

**Visual:** Dry, lively, dynamic, with naturally occurring hues within the material.

Thickness	Width	Lengths
8 mm	1 220 mm	2500 - 3050 mm

## AVAILABLE IN 9 COLOURS



TE85



TE90



TE30



TE20



TE00



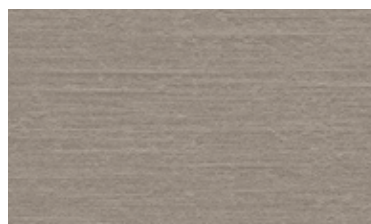
TE40



TE15



TE10



TE60

10 mm thick panels are available on request, subject to minimum order quantities.





JEMS Architekci  
Warsaw, Poland



STUDIOWORKERS, José and Isabel Machado  
Espinho, Portugal





ARKit  
Melbourne, Australia



# EQUITONE [ lunara ]

**EQUITONE [ lunara ]** is a through-coloured fibre cement panel with a surface resembling a lunar landscape. Each panel is unique in terms of its colour, texture and surface, with a pattern that is not repeated.

**Touch:** Rough, unpolished fibre cement surface with delicate linen touch.

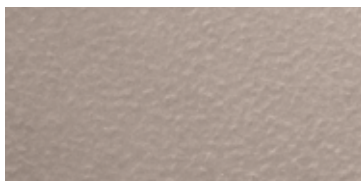
**Visual:** Expressive, natural, unique.

Thickness	Width	Lengths
10 mm	1 220 mm	2 500 - 3 050 mm

## AVAILABLE IN 2 COLOURS



LA20



LA60



Kirstine Roepstorff, Denmark



unala- Urban Nation Architects, Wemmel, Belgium







Kulla Architekten  
Hofheim, Germany

# EQUITONE [ lines ]

**EQUITONE [ lines ]** is a unique 3D shaped, through-coloured facade material that plays with light and shadow. It displays a linear texture that highlights the raw inner texture of the core fibre cement material.

**Touch:** Structured, relief, depth.

**Visual:** Different, playful, lots of possibilities, changes depending on the point of view.

Thickness	Width	Lengths
10 mm	1 220 mm	2 500 - 3 050 mm

## AVAILABLE IN 9 COLOURS



LT85



LT90



LT30



LT20



LT00



LT40



LT15



LT10



LT60

## LIGHT AND SHADOW



8h00



9h00



10h00



11h00



12h00



ASA Architects  
El Paso, USA





Kęstutis Kisielius  
Vilnius, Lithuania



Agence MW Architectes D. P. L. G.



Santos-Gaia Arquitectos  
Valpaços, Portugal



# The Colourfuls







ÁRTER Architects  
Antwerp, Belgium

# EQUITONE [ pictura ]

**EQUITONE [ pictura ]** is a fibre cement facade material with an ultra matte architectural finish. Thousands of custom-matched matte project colours are available on request.

**Touch:** Smooth, matte, no visible fibres.

**Visual:** Classic, brings colourful accents to the facade.

Thickness	Width	Lengths
8 - 12 mm	1 250 mm	2 500 - 3 100 mm

## AVAILABLE IN 20 STANDARD COLOURS

				
PW141	PW841	PG542	PG842	PG641
				
PG243	PG843	PG546	PG545	PG544
				
PG241	PG844	PG444	PG443	PG442
				
PA041	PA944	PG342	PG341	PG742

Other colours on request, subject to minimum order quantities.



Jo Coenen  
Venlo, The Netherlands





mvmarchitekt + starkearchitektur  
Köln, Germany

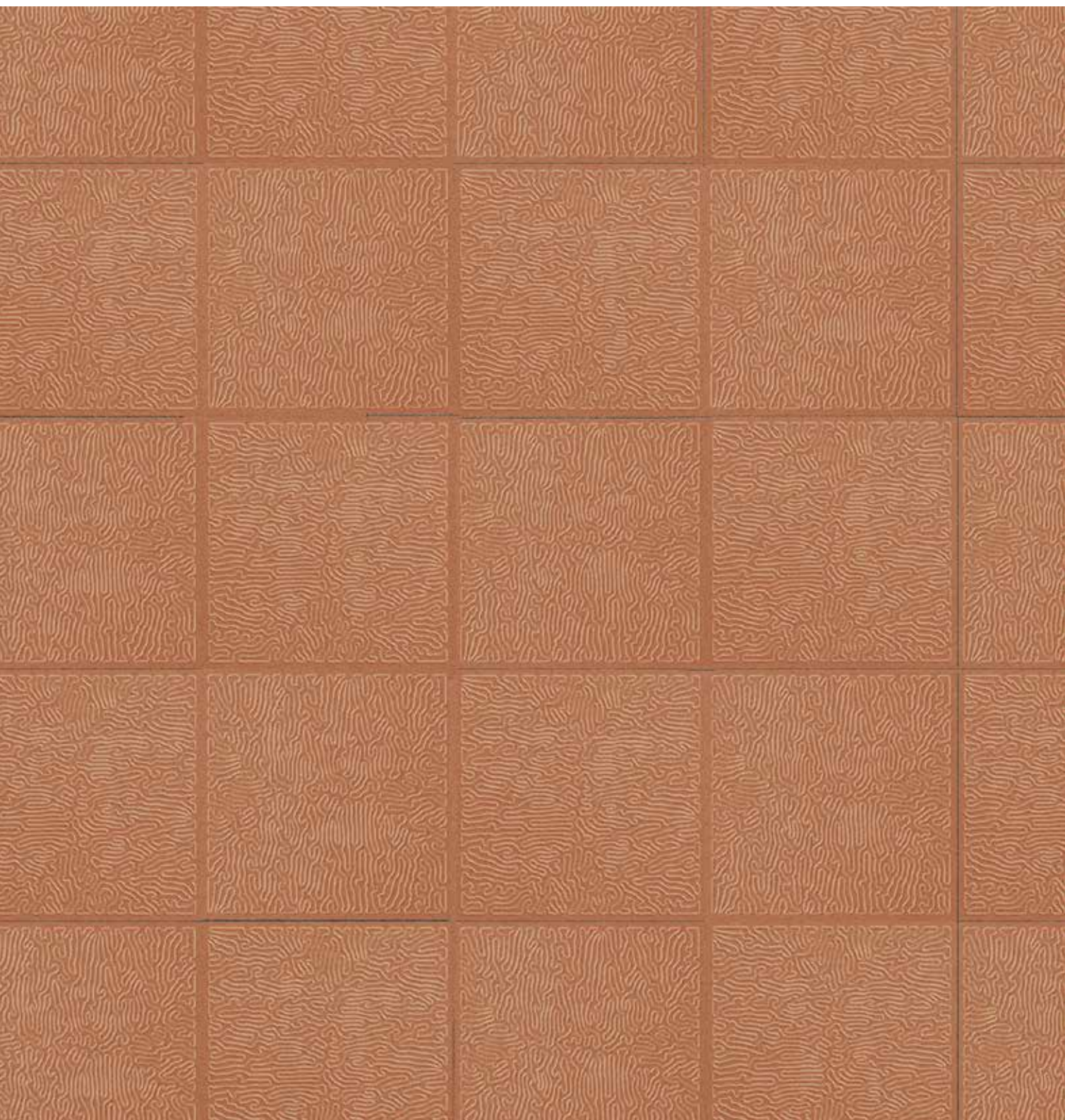


TKD Architects  
Sydney, Australia

# The Graphicals









# The Graphicals







Dorota Szlachcic



# EQUITONE [ inspira ]

**EQUITONE [ inspira ]** is a high-density fibre cement panel with a digital printed surface covered with a UV finishing.

The surface finish is smooth, hard, matte and resistant to UV radiation. The UV finishing provides a hard, dirt resistant surface finish with a high abrasion resistance and a permanent and durable anti-graffiti surface.

Your only limit is your imagination.

- 1) Designs created with and for architects and inspired by nature.
- 2) Bespoke decor on request.

Submit your project on the 'Design Support Service page' on [www.equitone.com](http://www.equitone.com)

Thickness	Width	Lengths
8 mm	1 250 mm	2 500 - 3 100 mm

## 5 designs



Coral grow



Coral trace



Leaves



Sine wave



Carved wood



## Unlimited Creation



Dorota Szlachcic  
Łódź Poland

# EQUITONE [ inspira ]

## Wood

AVAILABLE IN 8 WOOD DECORS WITH ANTI-GRAFFITI SURFACE:

Thickness	Width	Lengths
8 mm	1 250 mm	2 500 - 3 100 mm



FCW 419 157 B  
Orange oak



FCW 417 157  
Classic oak



FCW 416 156  
Rustic oak\*



FCW 413 127  
White oak



FCW 412 125 B  
Carbon oak



FCW 411 125  
Old oak



FCW 407 121 IB  
Light walnut



FCW 404 121  
American walnut\*





# Rust

AVAILABLE IN 4 RUST DECORS WITH ANTI-GRAFFITI SURFACE:

Thickness	Width	Lengths
8 mm	1250 mm	2 500 - 3 100 mm



FCR 505 656  
Vertical rust



FCR 504 535  
Thick rust



FCR 503 484  
Wild rust



FCR 502 454  
Modern rust



# EQUITONE [ inspira ]

## Stone

AVAILABLE IN 8 STONE DECORS WITH ANTI-GRAFFITI SURFACE:

Thickness	Width	Lengths
8 mm	1 250 mm	2 500 - 3 100 mm



FCS 548  
Black marble



FCS 547  
Cracked marble



FCS 530  
Black stone



FCS 075  
Silver calacatta



FCS 074  
Gold calacatta



FCS 059  
White calacatta



FCS 006  
Beige travertine



FCS 004  
Amber travertine



## Concrete

AVAILABLE IN 9 CONCRETE DECORS WITH ANTI-GRAFFITI SURFACE:

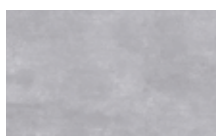
Thickness	Width	Lengths
8 mm	1250 mm	2 500 - 3 100 mm



FCC 426 B  
Warm concrete



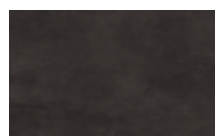
FCC 426  
Bright concrete



FCC 320  
Grey concrete



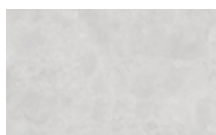
FCC 318 C  
Industrial grey



FCC 318 A  
Industrial black



FCC 318  
Industrial brown



FCC 292  
Silver concrete



FCC 020 B  
Dark rust



FCC 020 A  
Grey rust







 **EQUITONE**®  
Fibre cement facade materials



[equitone.com](http://equitone.com)

Follow us:    