



# MONTERINGSVEJLEDNING UNI-SKRUE MANUAL TRÆ

## Ansvarsfraskrivelse

Oplysningerne i denne vejledning er på ingen måde udtømmende. Dette dokument er udarbejdet for at hjælpe med korrekt forberedelse og installation af EQUITONE-paneler. For en fuldstændig og detaljeret oplysninger om opbevaring, håndtering, forberedelse og krav til design og installation af EQUITONE, henvises til EQUITONE Projektering- og anvendelsesvejledning og andre tilgængelige EQUITONE relevante tekniske dokumenter.

Se EQUITONE sikkerhedsdatablad (MSDS) for at få flere oplysninger om sundhed og sikkerhed, herunder almindelige farer i forbindelse med arbejde med EQUITONE, og foranstaltninger til at minimere risikoen.

Oplysningerne i dette dokument er korrekte på udstedelsestidspunktet. På grund af vores engagerede program for løbende materiale- og systemudvikling forbeholder vi os dog retten til at ændre eller ændre oplysningerne i dette dokument uden forudgående varsel. Kontakt venligst din lokale EQUITONE salgsorganisation eller besøg [www.equitone.com](http://www.equitone.com) for at sikre dig, at du har den mest aktuelle version.

Dette dokument er udarbejdet i god tro, og der kan ikke påtages ansvar for tab eller skade som følge af dets anvendelse. Billeder og konstruktionsdetaljer i dette dokument er ikke i en bestemt målestok og er kun vejledende og har kun til formål at illustrere.

Dette dokument er beskyttet af international lovgivning om ophavsret. Gengivelse og distribution af hele eller dele heraf uden forudgående skriftlig tilladelse er strengt forbudt. EQUITONE og logoer er varemærker tilhørende Etex NV eller et af dennes datterselskaber. Enhver brug uden tilladelse er strengt forbudt og kan være i strid med varemærkelovgivningen.

# INDHOLDSFORTEGNELSE

## VÆRKTØJ OG TILBEHØR

Side 3

## OPBEVARING OG HÅNDBTERING

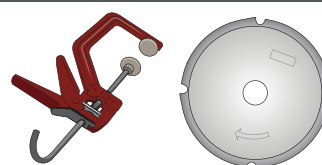
Side 4-6



## SKÆRING AF PLADER

Værktøj, side 7

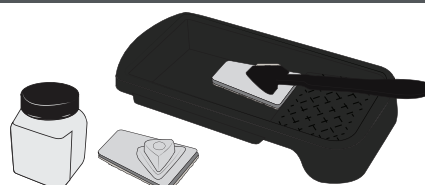
Skæring af plader, side 8



## BEHANDLING AF PLADENS KANTER

Værktøj, side 9

Behandling af pladens kant, side 10-12



## PLADEBORING

Værktøj, side 13

Pladeboring, side 14-15

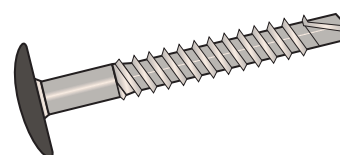
Pladeboring EQUITONE [linea], side 16-17



## UNI-SKRUE FASTGØRELSE

Værktøj, side 18

UNI-skruefastgørelse, side 19-20



## VENTILATION

Side 21



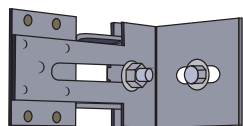
## INSTALLATION

Side 22-26

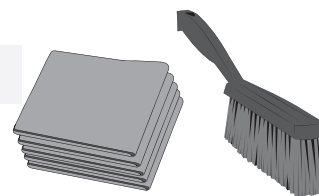


# VÆRKTØJ OG TILBEHØR

(Justerbar konsol)



EQUITONE  
Care Toolkit



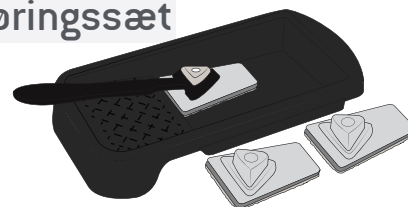
EPDM Bånd



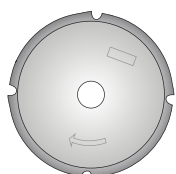
\*LUKO  
kantimprægnering



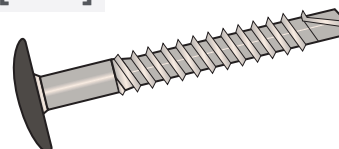
\*LUKO påførings sæt



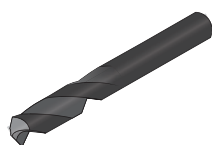
EQUITONE  
Savklinge  
fibercement



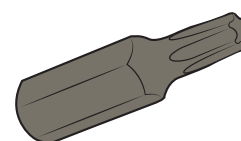
UNI-Skrue [Træ]



EQUITONE  
bor til  
fibercement  
7mm



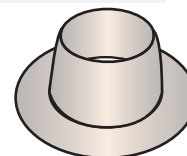
Torx T20



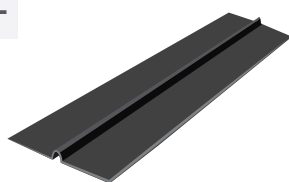
EQUITONE  
[linea]  
bor 7mm



\*\*UNI-Skrue hulforstærker



Alu fugeprofil -  
Ubehandlet  
eller sort



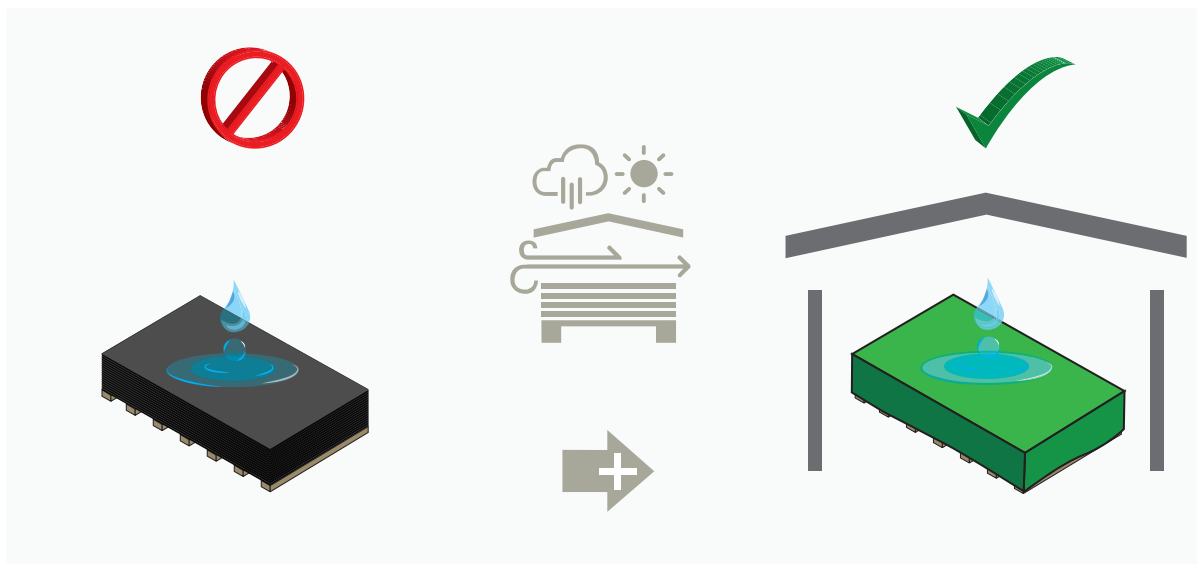
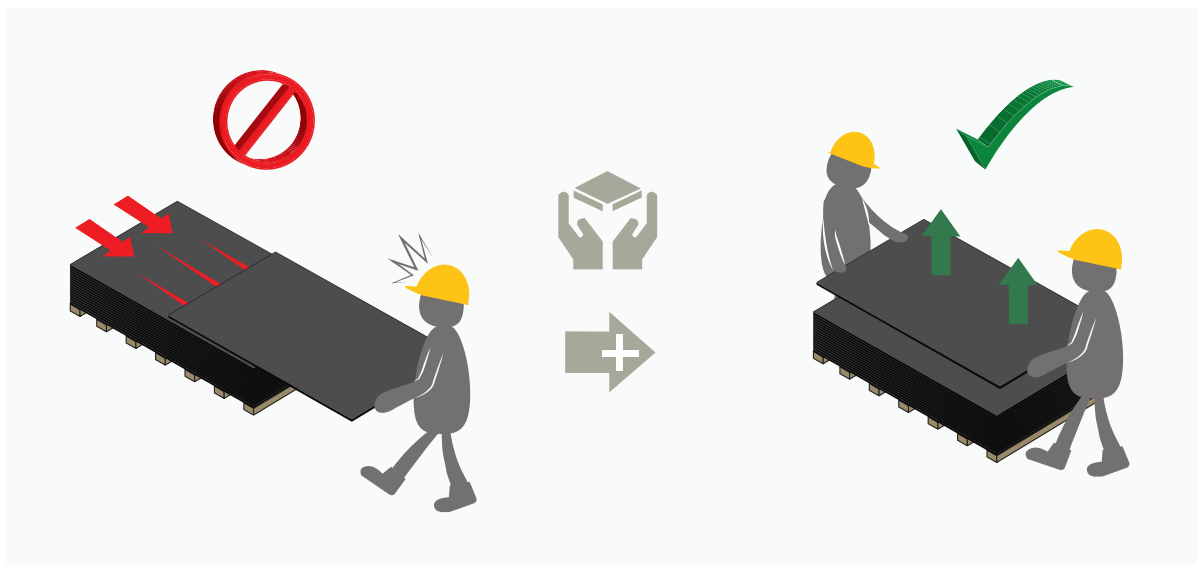
Perforeret ventilationsprofil

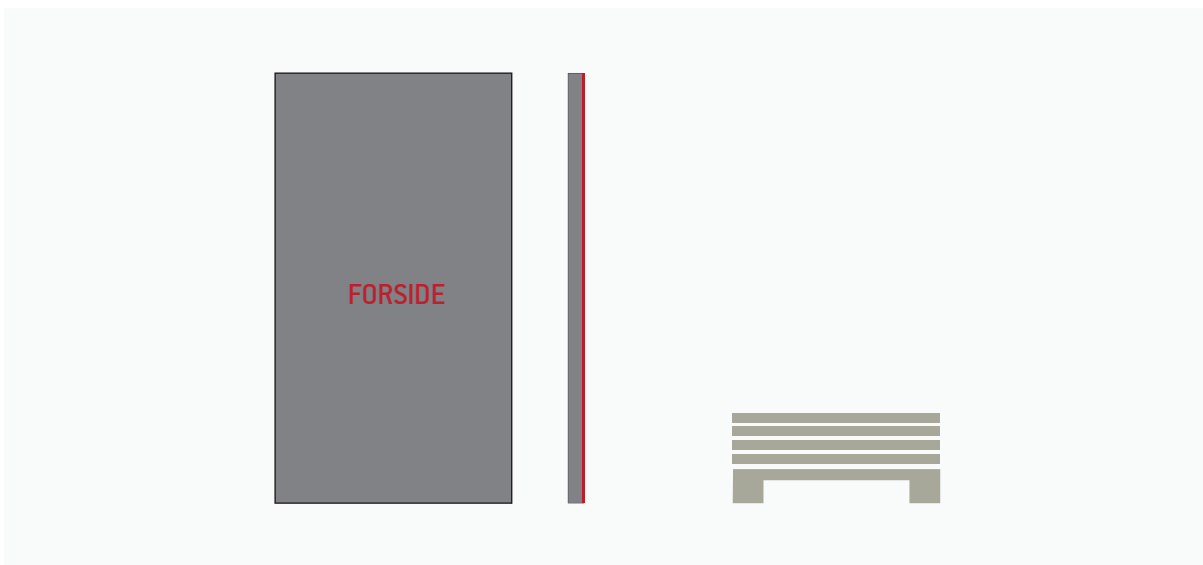
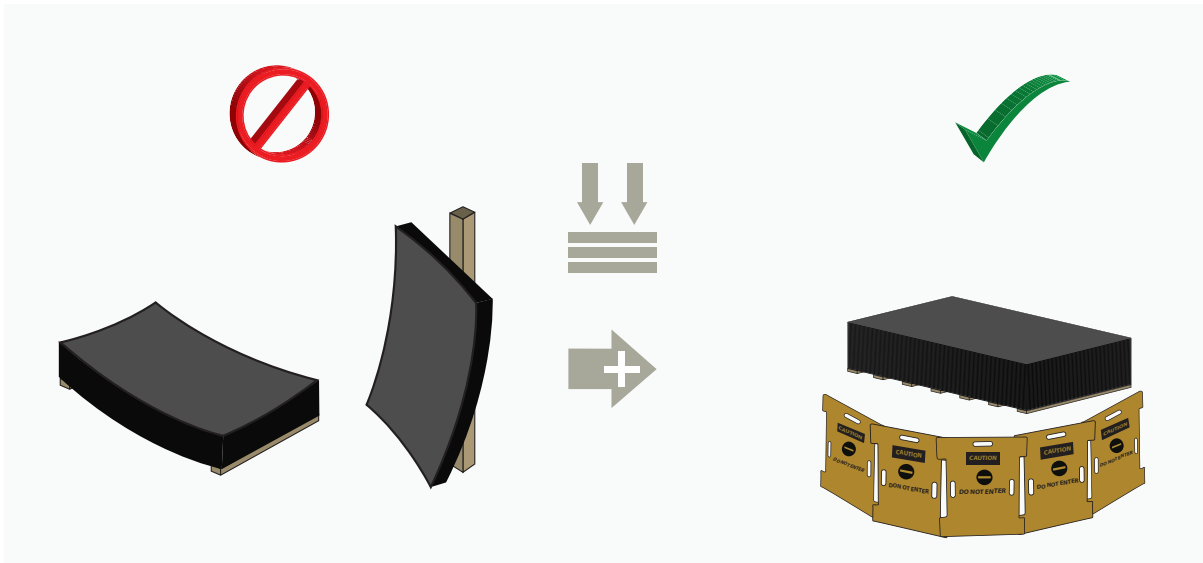


\*Kun for EQUITONE [natura] PRO & [natura]

\*\*Kun for EQUITONE [natura] PRO & [pictura]

# OPBEVARING OG HÅNDTERING

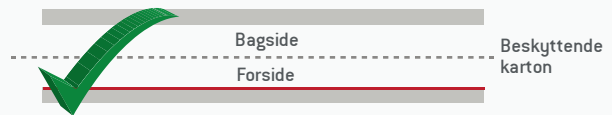




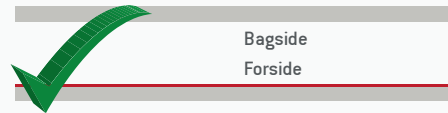
EQUITONE [natura], [natura] PRO, [pictura], & [textura]



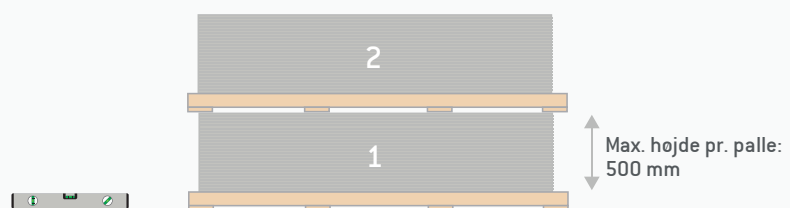
EQUITONE [linea]



EQUITONE [tectiva] & [lunara]

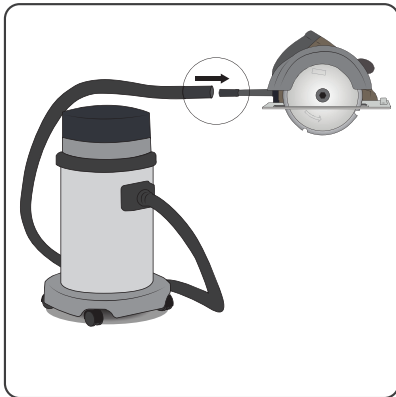


På arbejdspladsen anbefales det, at der højst er to paller i højden.



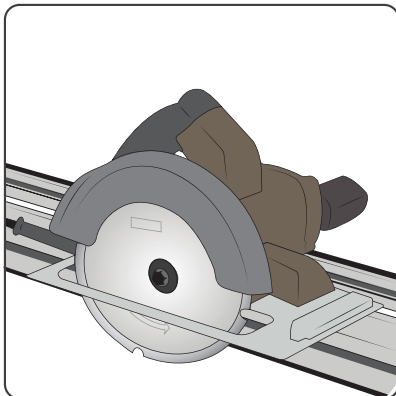
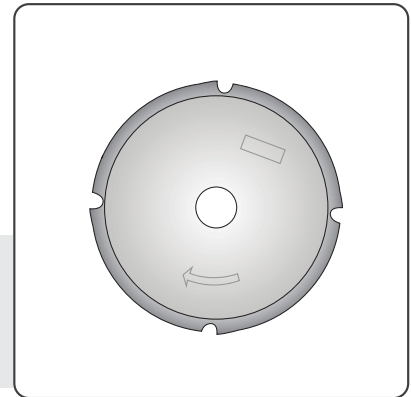
# SKÆRING AF PLADER

## VÆRKTØJ



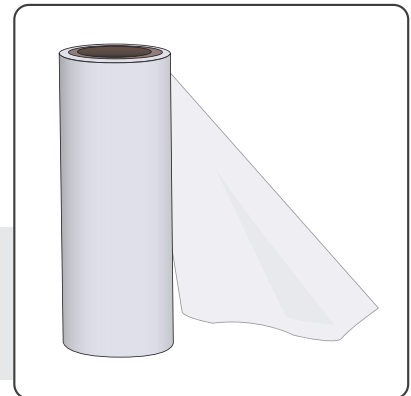
Støvudsugnings-  
system

EQUITONE  
savklinge



Rundsav &  
styreskinne

Polystyrene-  
film

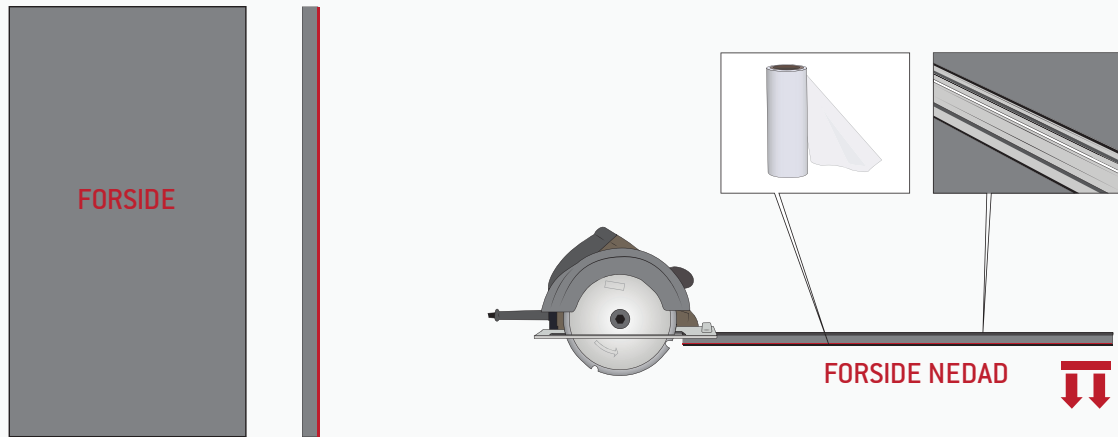


Stabilt  
arbejdsbord med  
offerplade

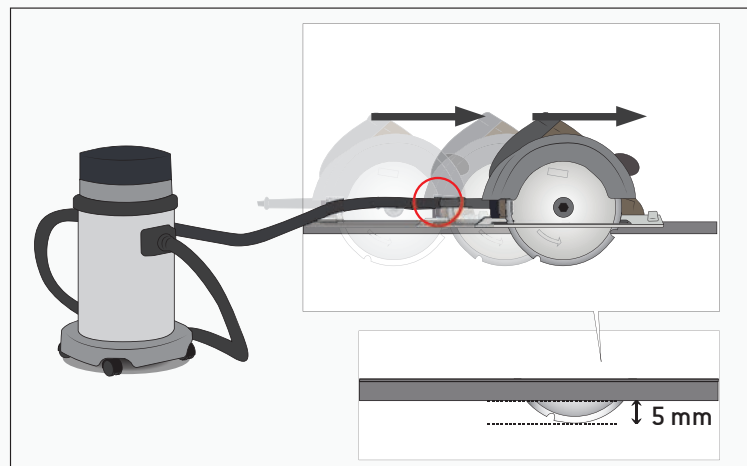
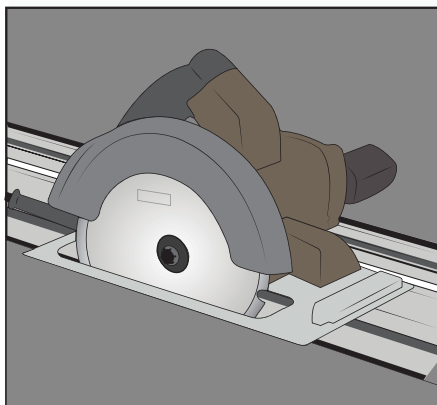


# SKÆRING AF PLADER

1



2

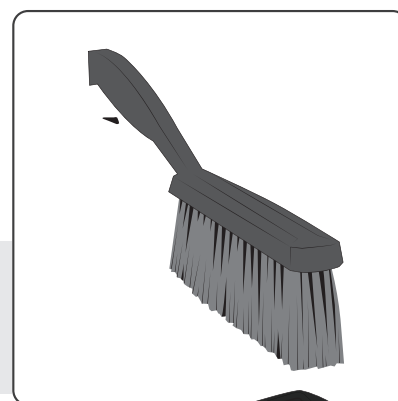


# BEHANDLING AF PLADENS KANTER

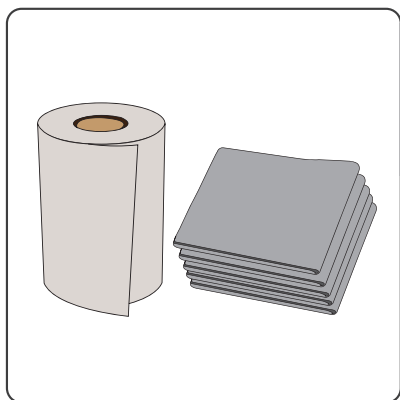
## VÆRKTØJ



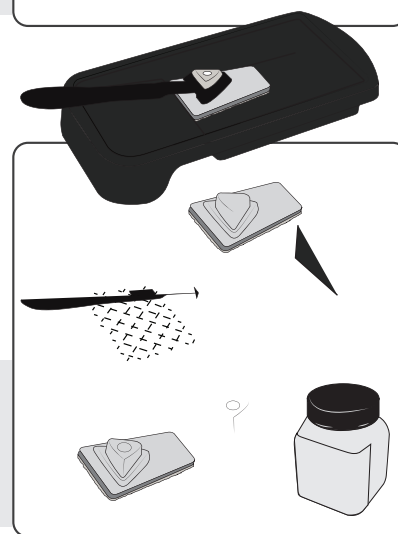
Sandpapir  
(P80)



Blød  
børste



Mikrofiberdug,  
papirhåndklæde

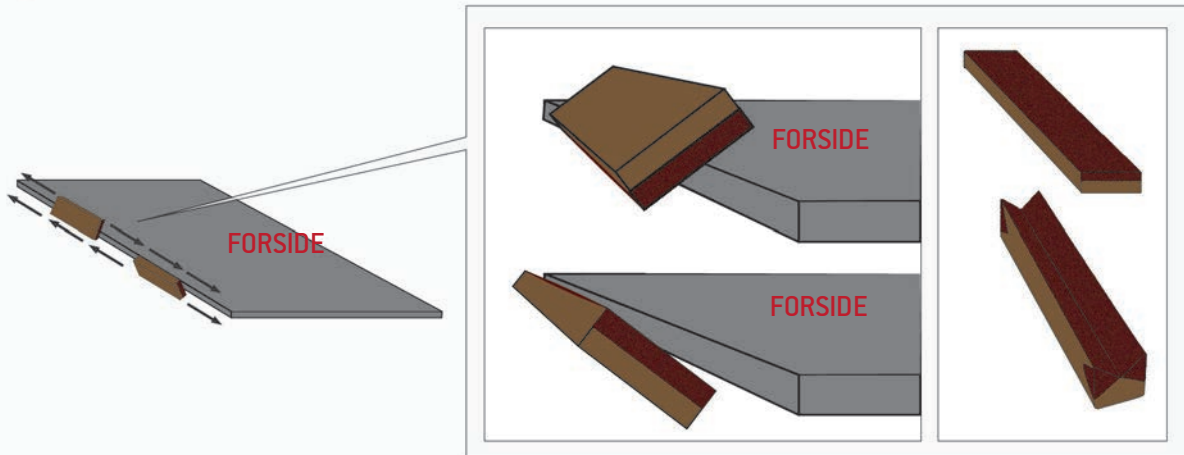


LUKO kantforsegler  
& applikator

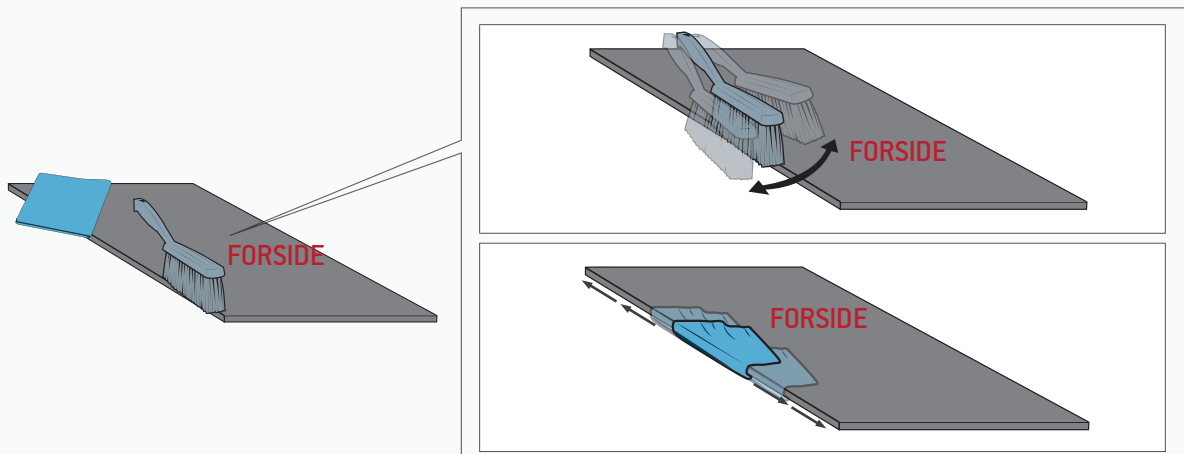
\*Til EQUITONE [natura] &  
[natura] PRO

# BEHANDLING AF PLADENS KANTER

1

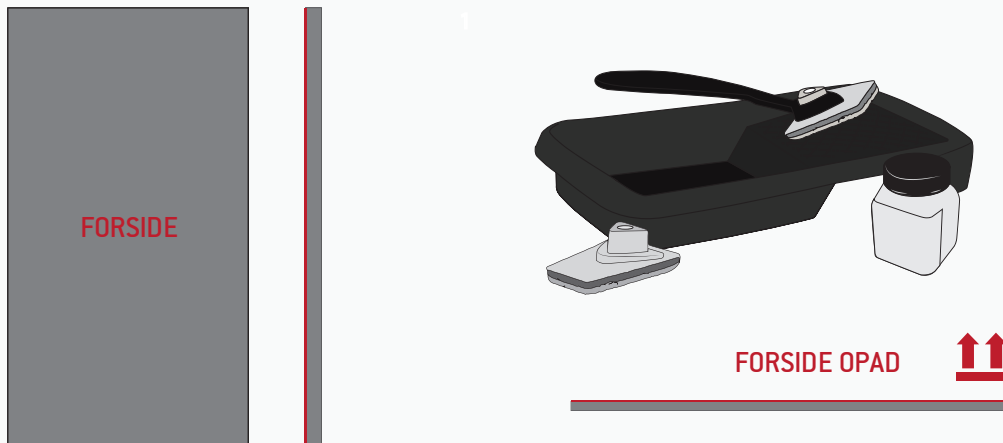


2

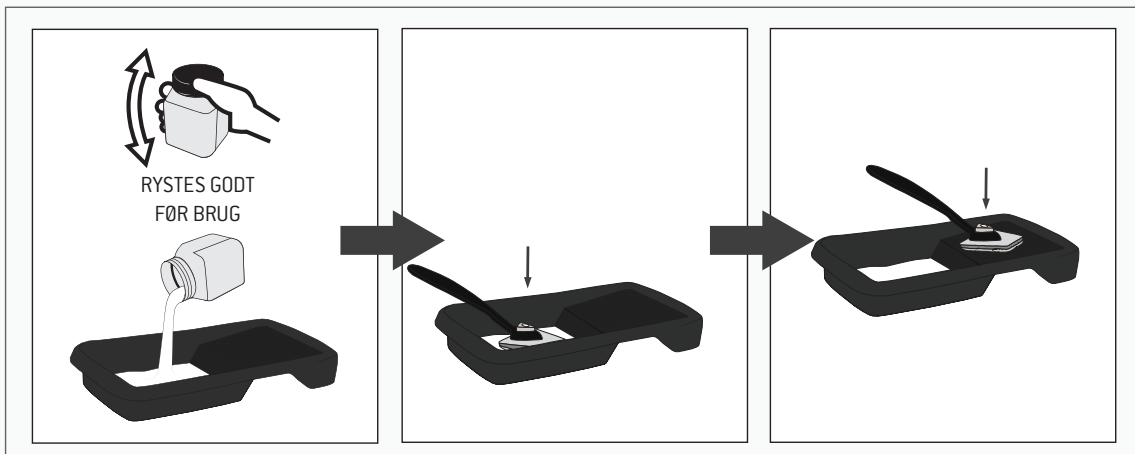


Trin 3 til 7: Gælder kun for EQUITONE [natura] og [natura] PRO

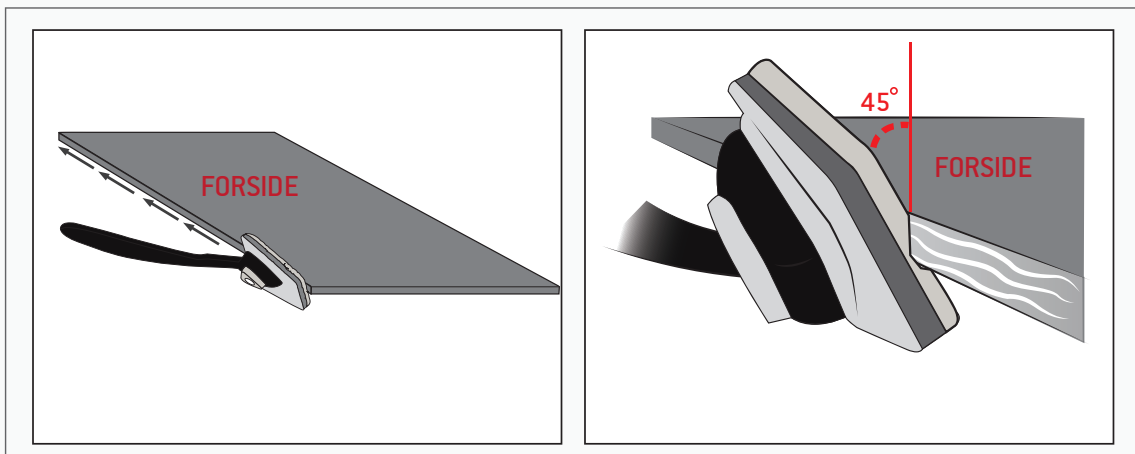
3



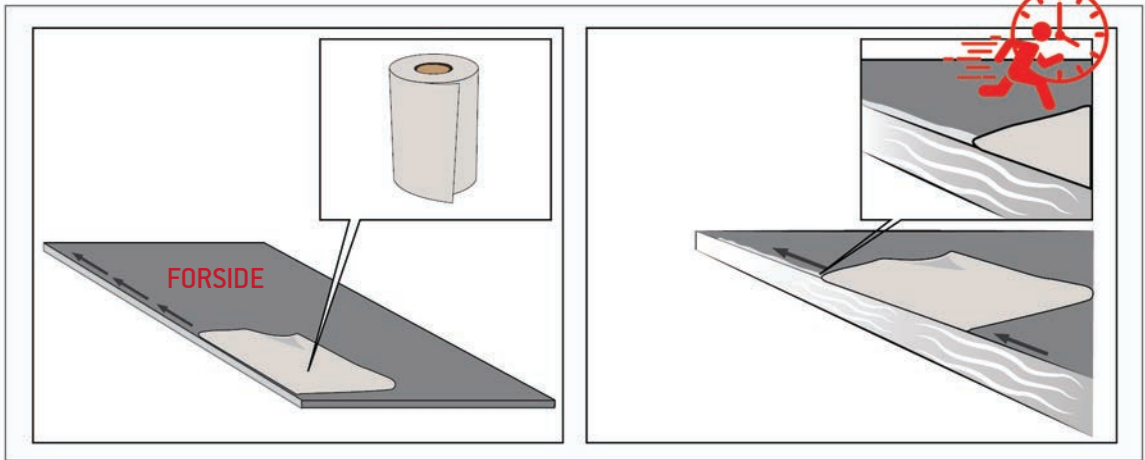
4



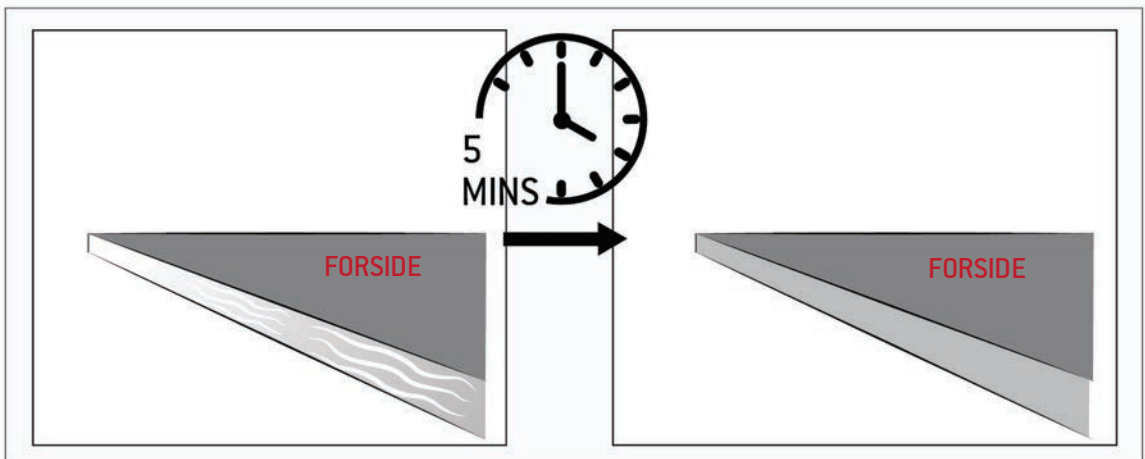
5



6

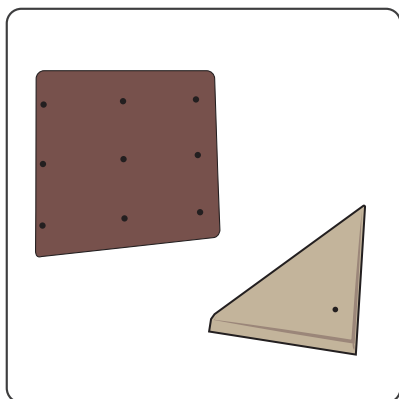


7



# PLADEBORING

## VÆRKTØJ

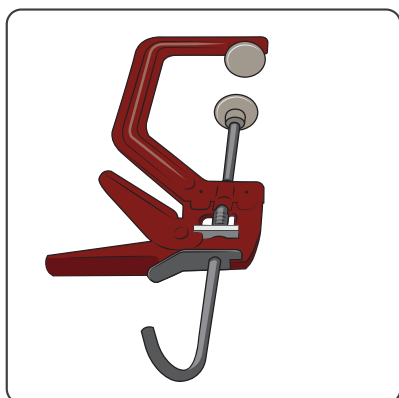


Skabelon til huller (valgfrit)

EQUITONE bor  
7mm diameter

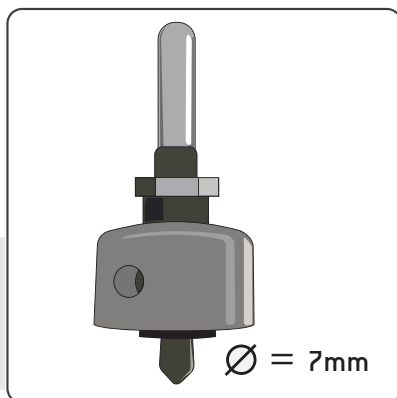


Ø = 7mm



G-klemme  
(valgfrit)

EQUITONE [linea]  
bor  
7mm diameter

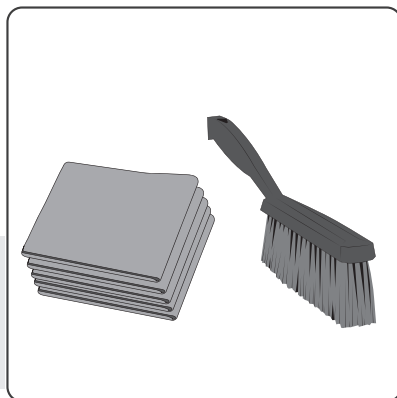


Ø = 7mm

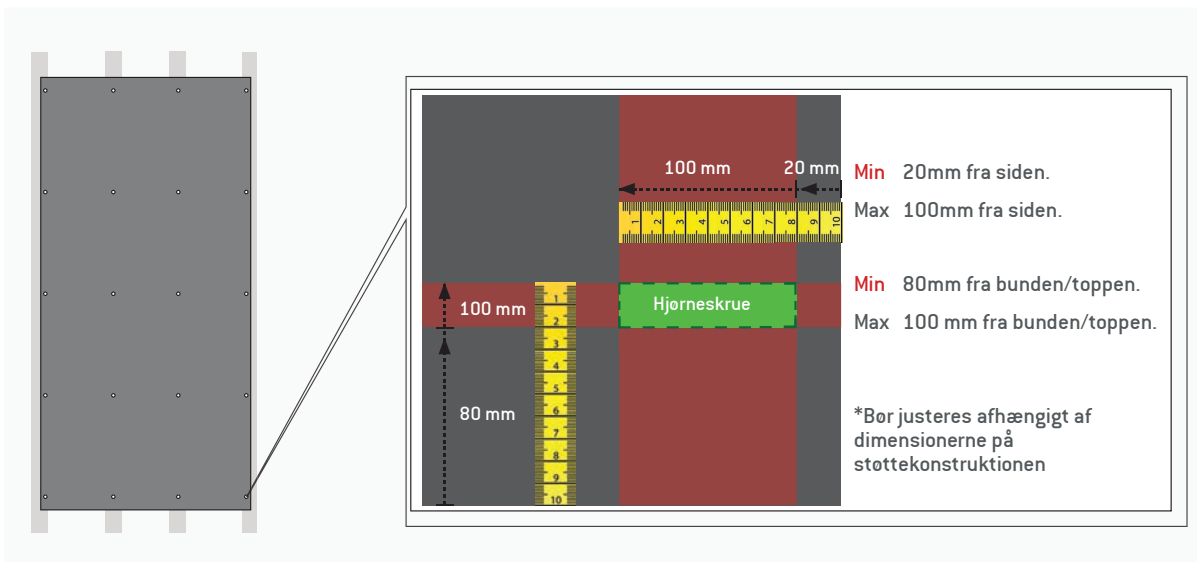
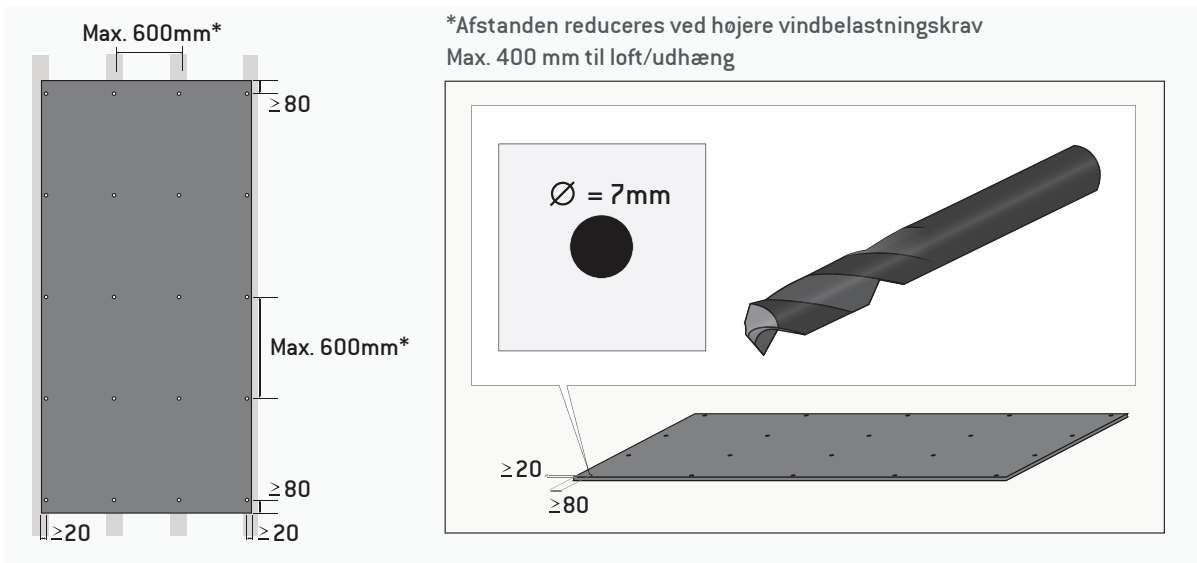
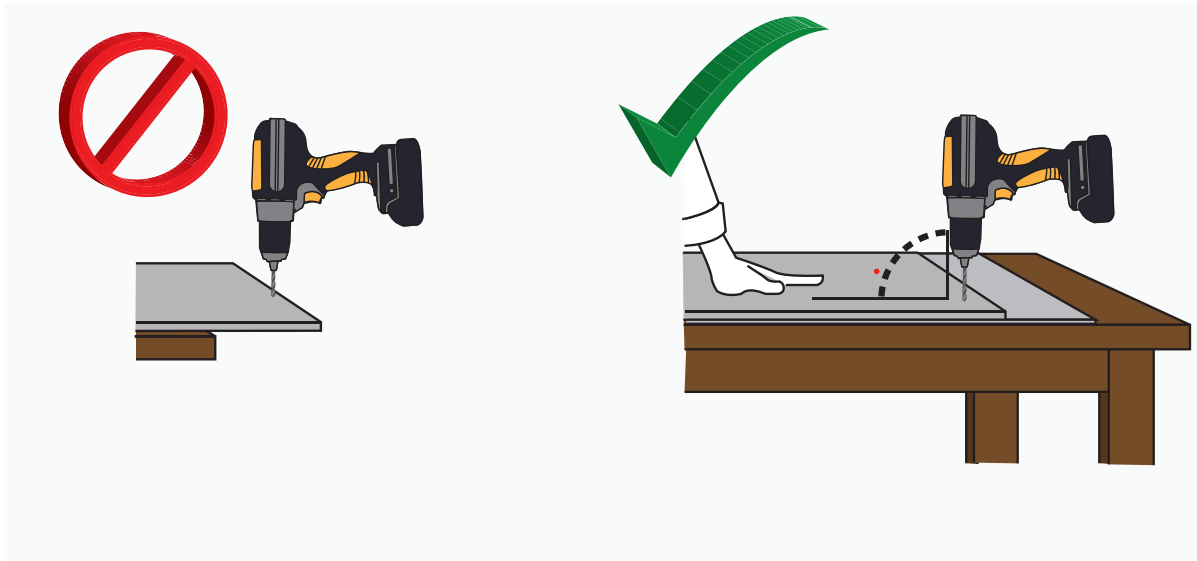


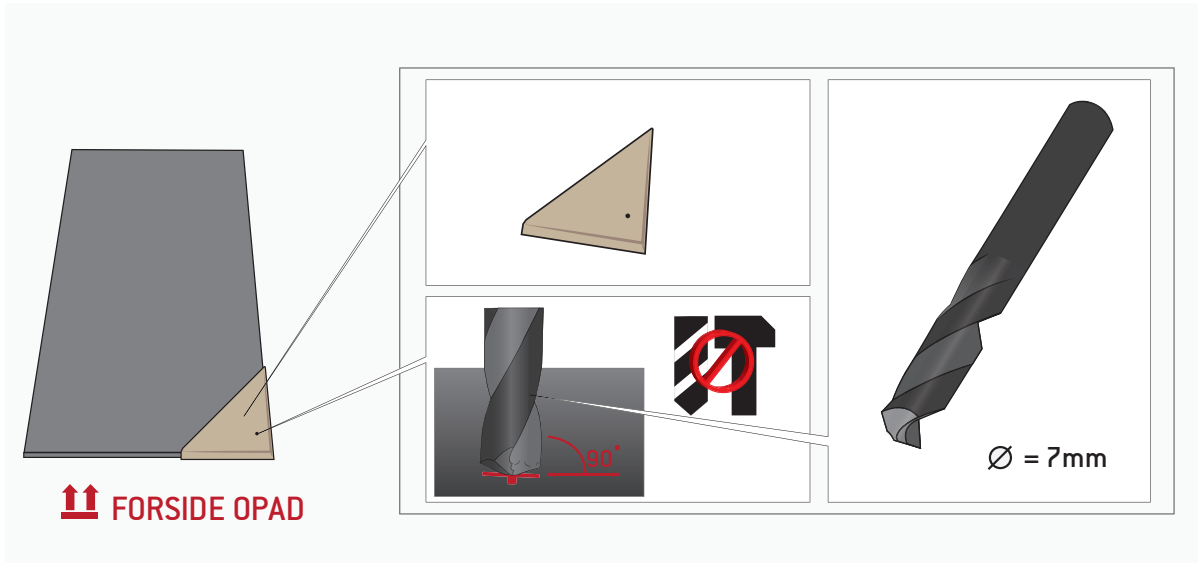
Stabilt  
arbejdsbord  
med offerplade

Mikrofiberklud &  
blød børste



# PLADEBORING

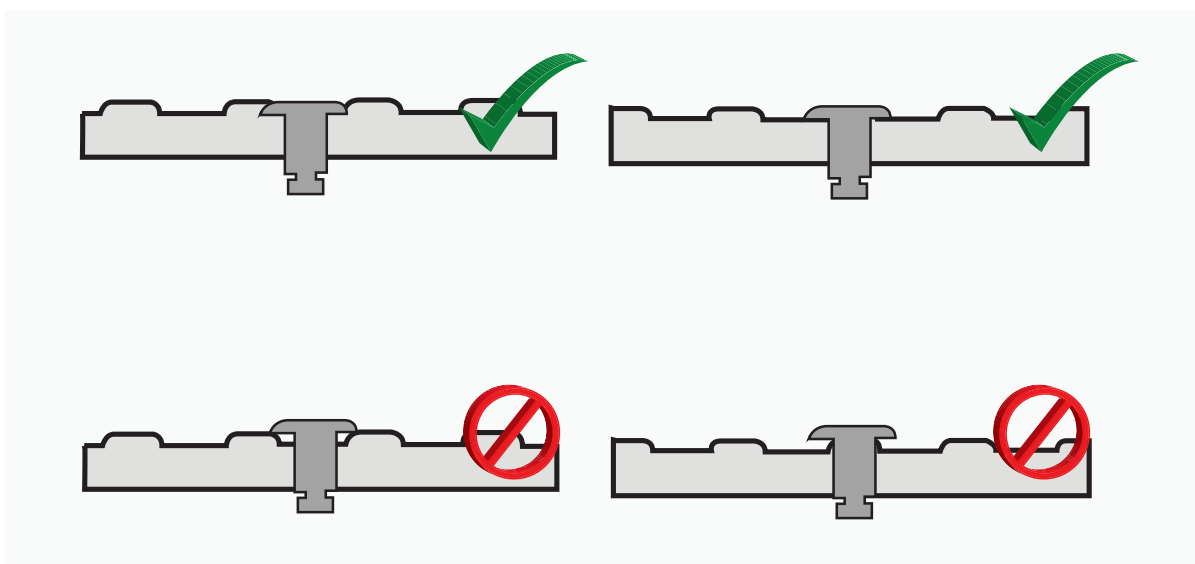
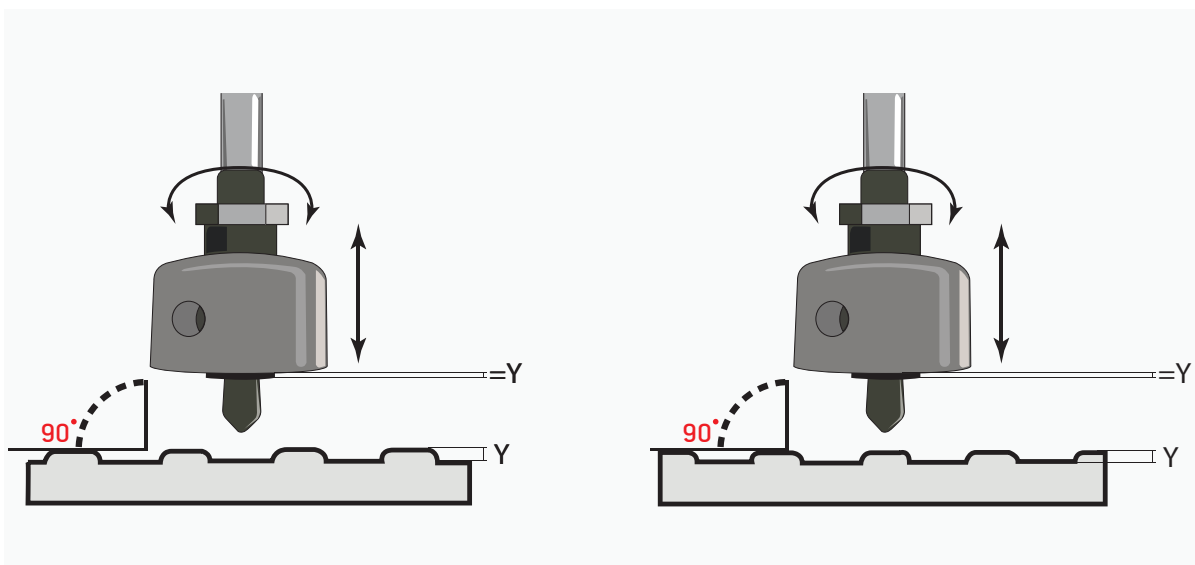
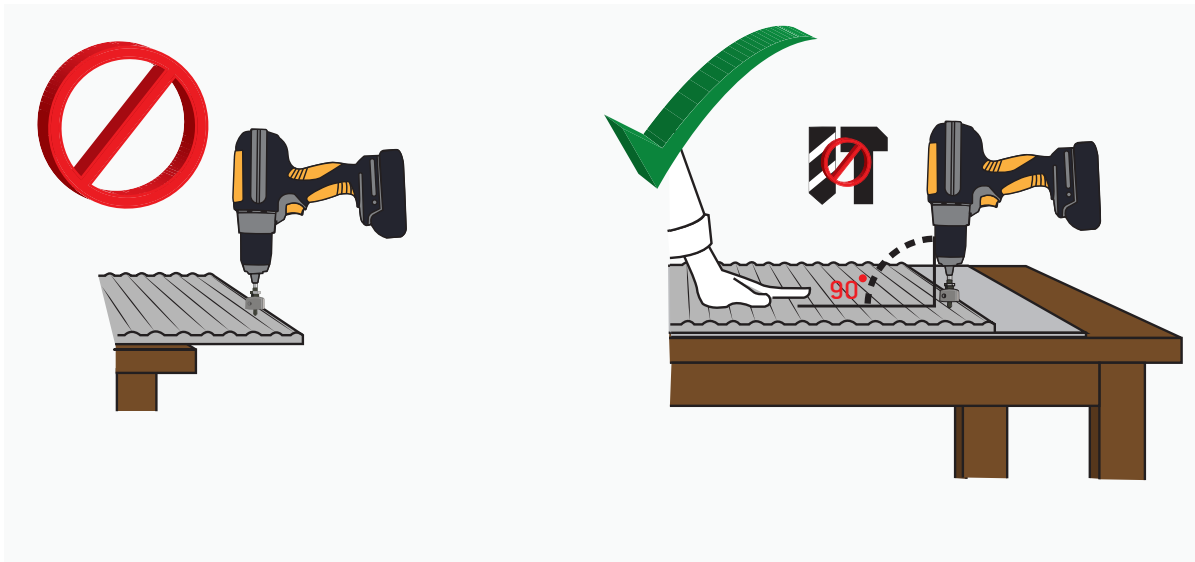


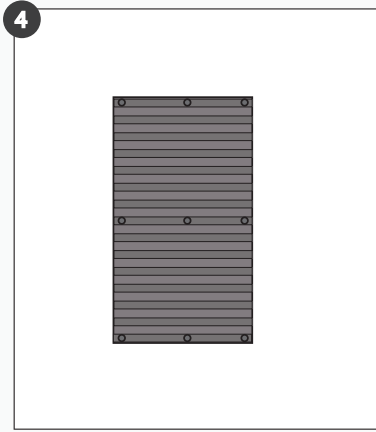
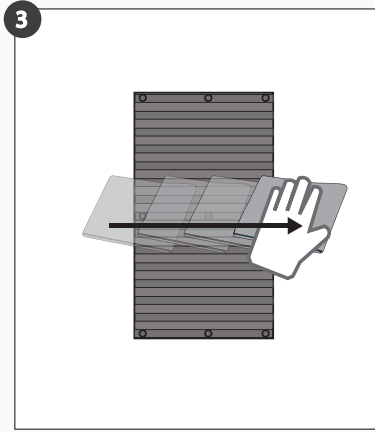
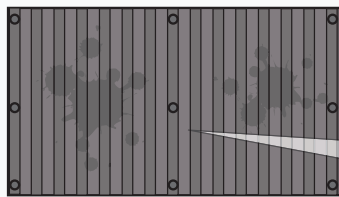
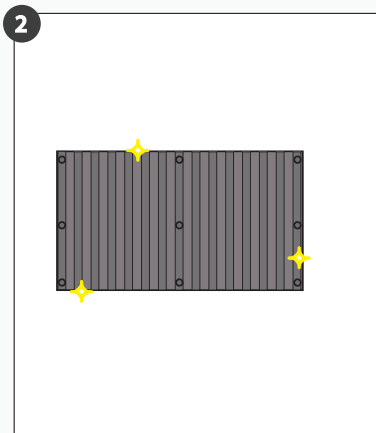
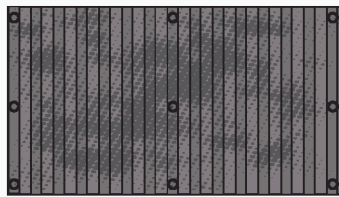




# PLADEBORING

EQUITONE [linea]



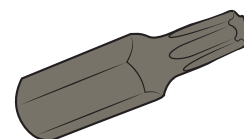


# UNI-SKRUE FASTGØRELSE

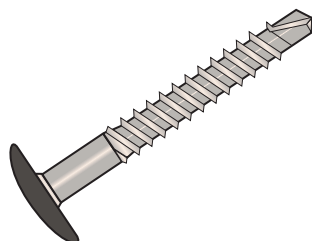
## VÆRKTØJ



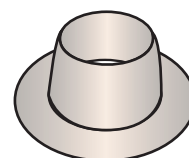
Batteridrevet  
boremaskine



Torx T20



UNI-skrue  
[Træ]



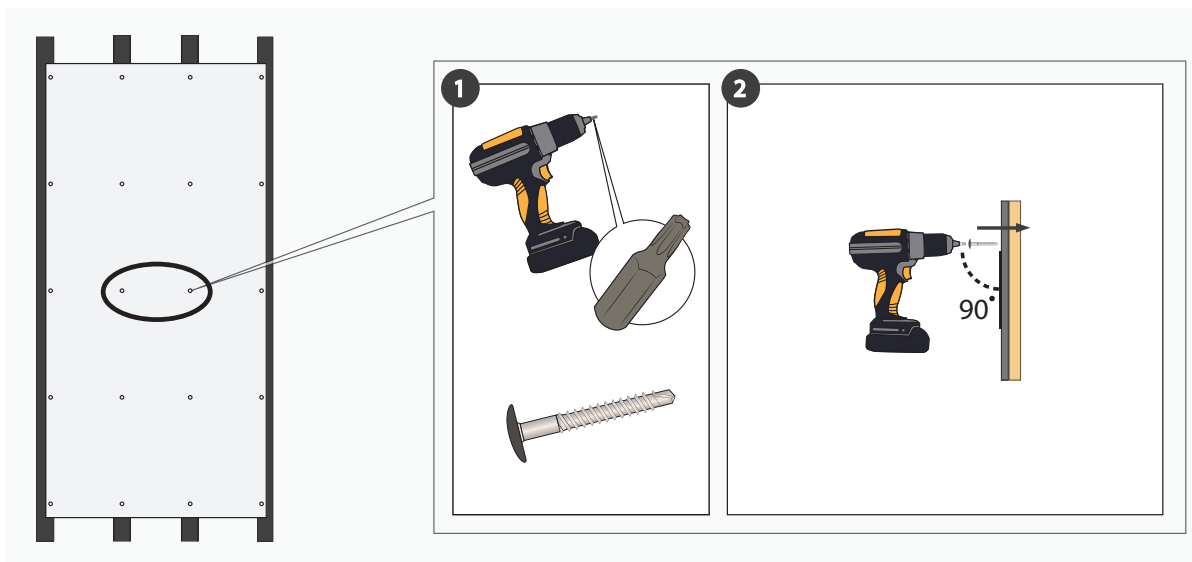
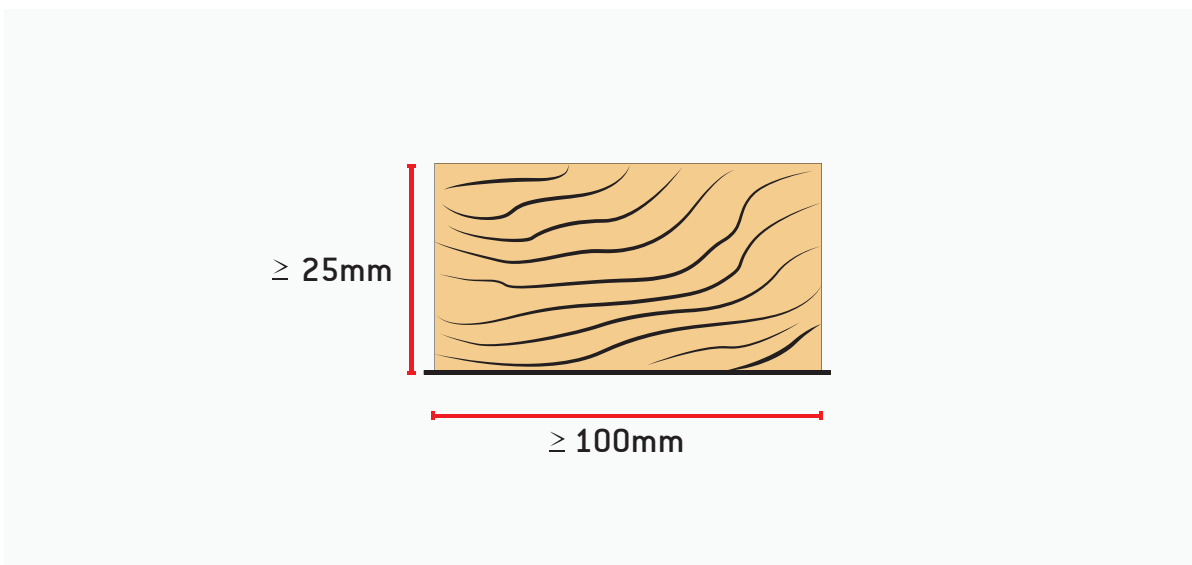
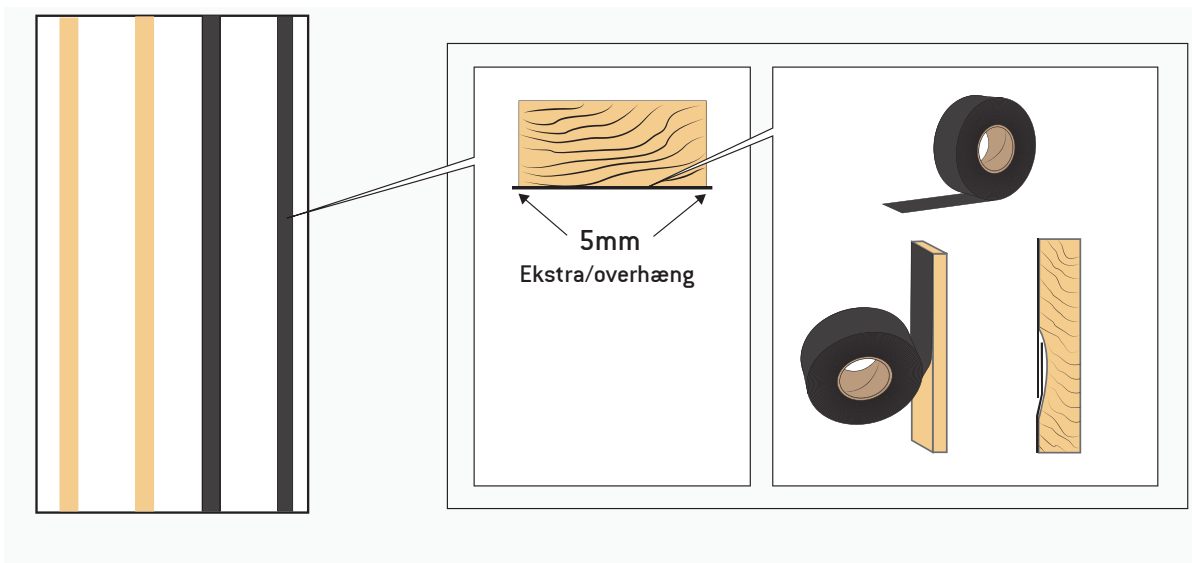
\*Hulforstærker

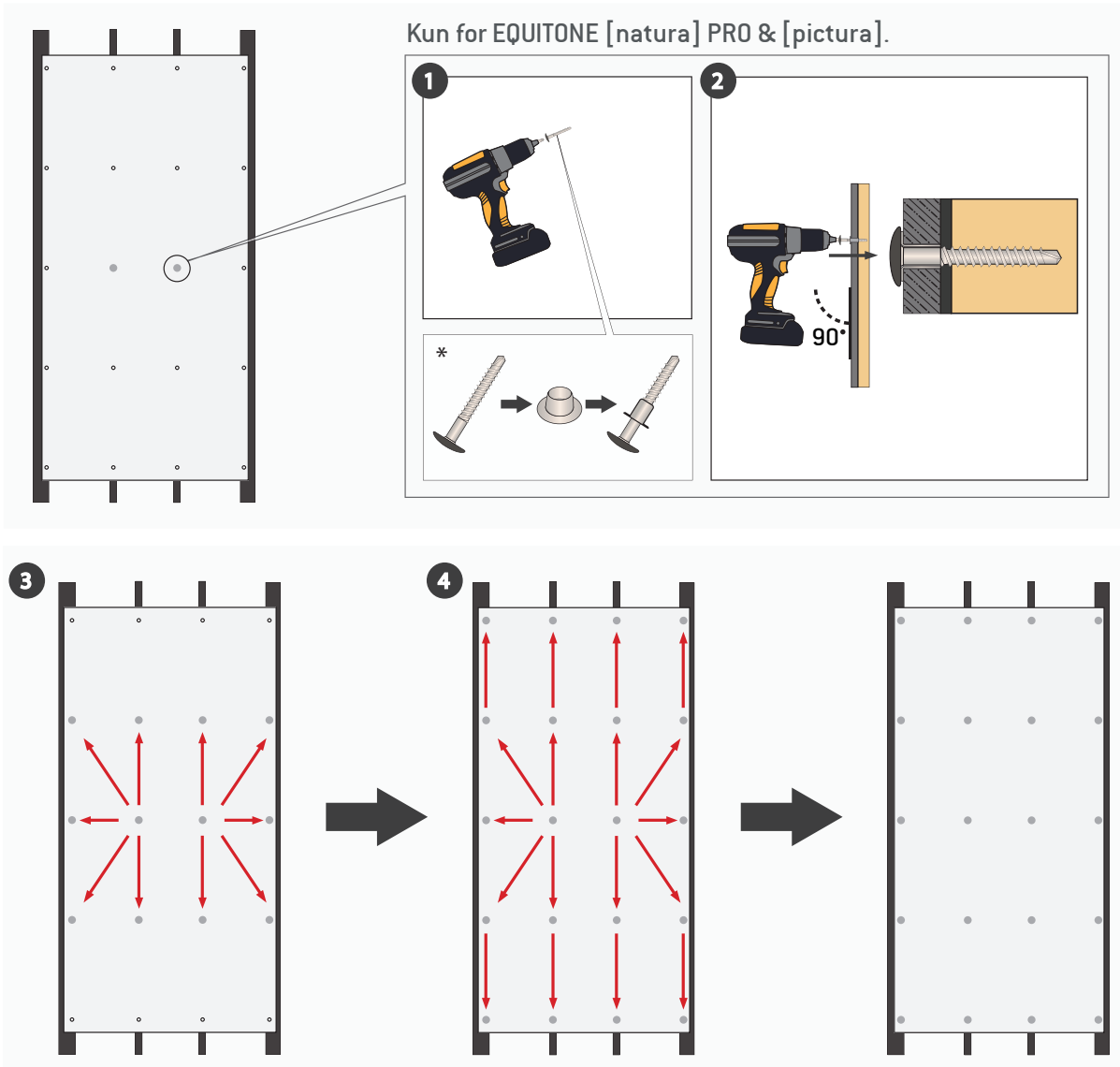


EPDM bånd

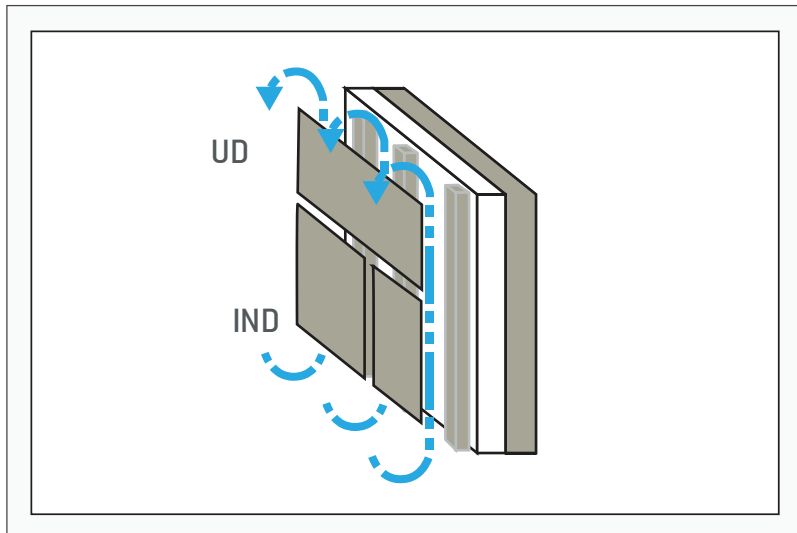
\*Kun for EQUITONE [natura] PRO & [pictura]

# UNI-SKRUE FASTGØRELSE



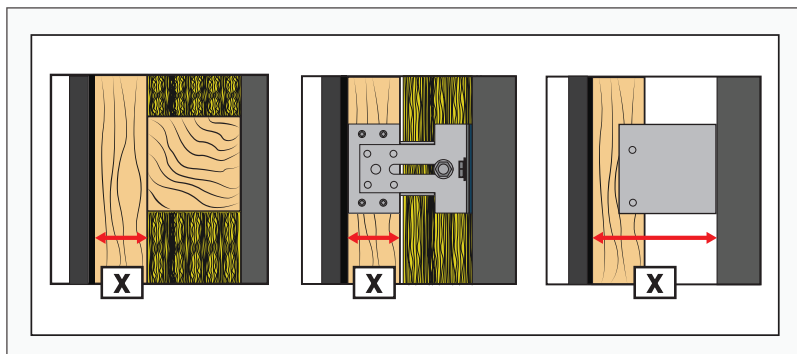


# VENTILATION

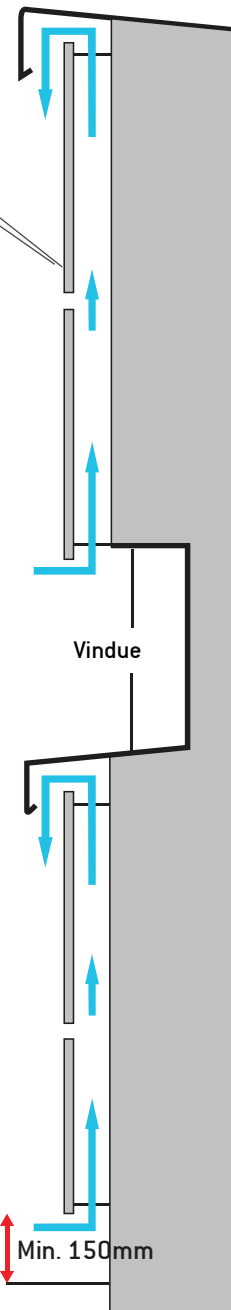


LUFT IND ≥ LUFT UD

MIN. 10mm\* ≥ MIN 10mm\*  
 (2xIND)\*\* ≥ (2xUD)\*\*



X ≥ 20mm\*\*\*



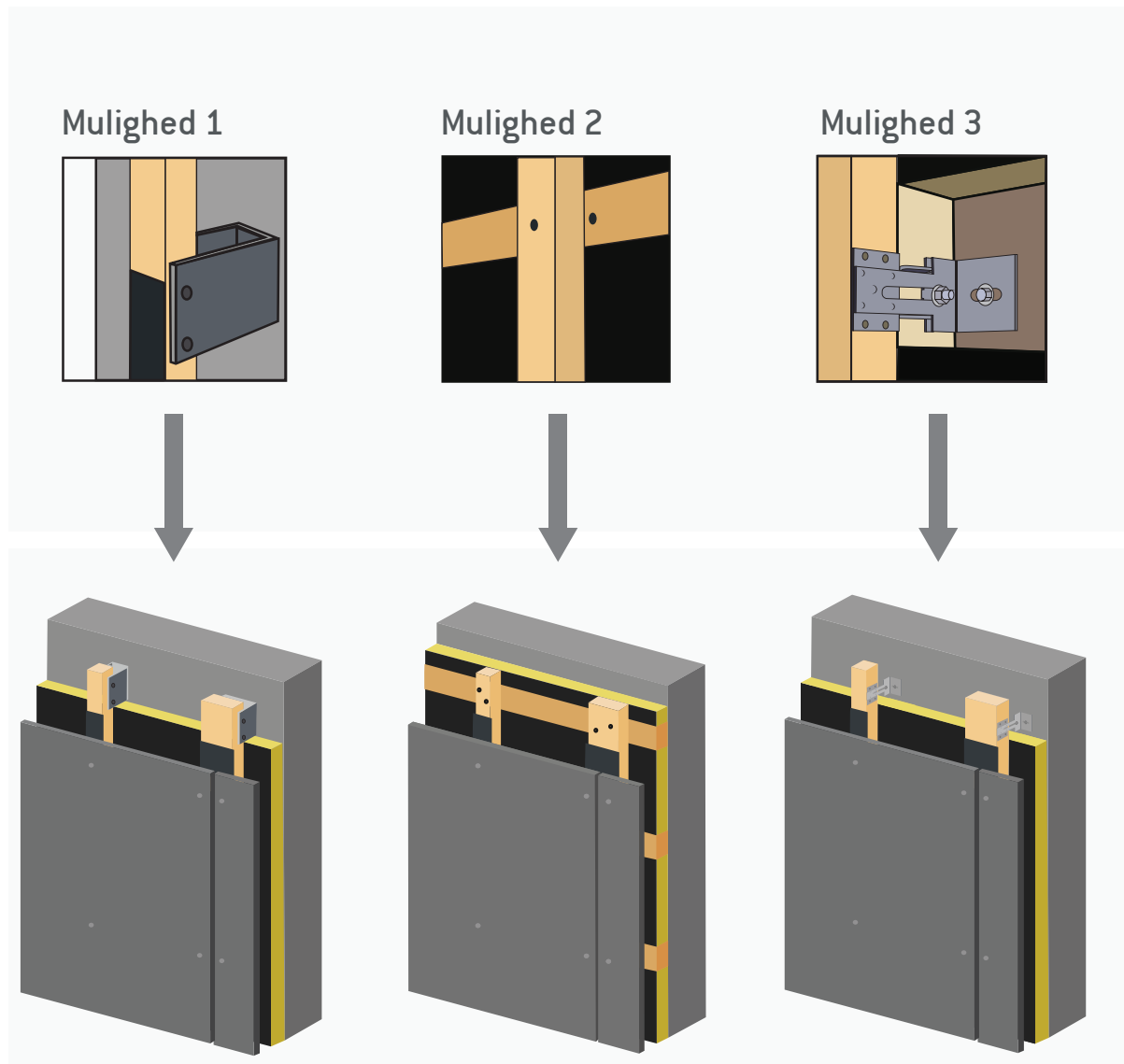
\* Der henvises til andre relevante tekniske EQUITONE-dokumenter for anbefalinger om minimumsstørrelser for ventilationsind- og udlob samt minimumsafstand til jordoverfladen.

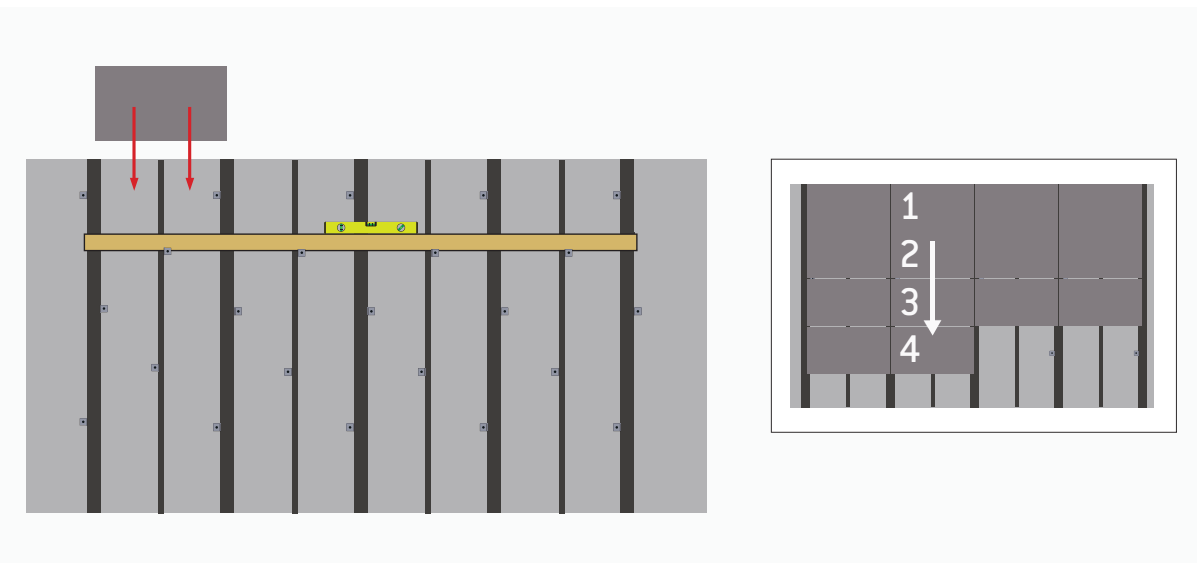
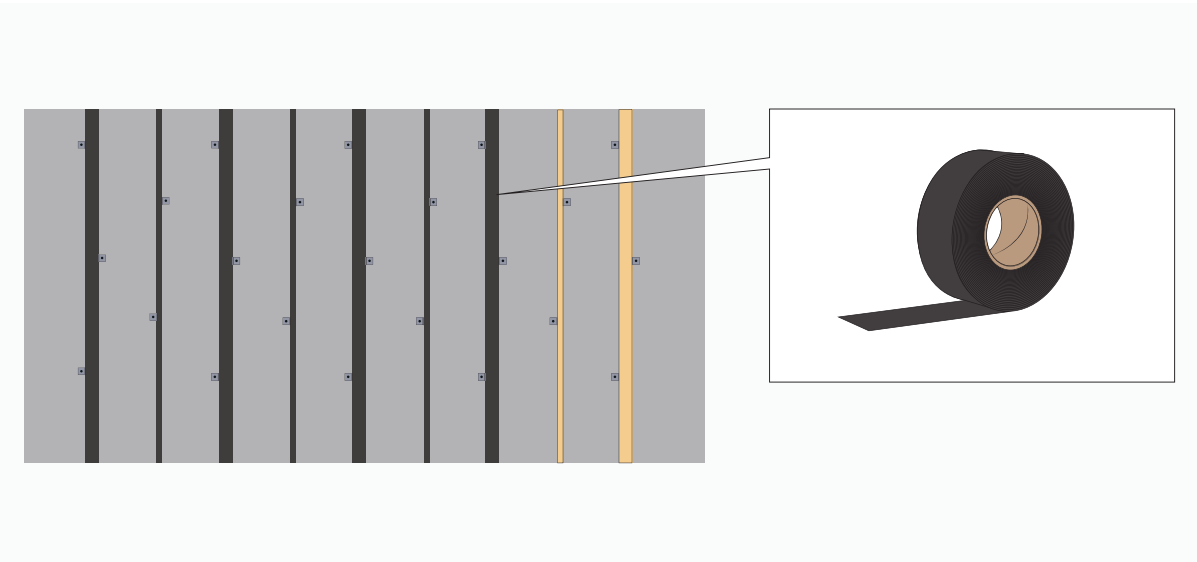
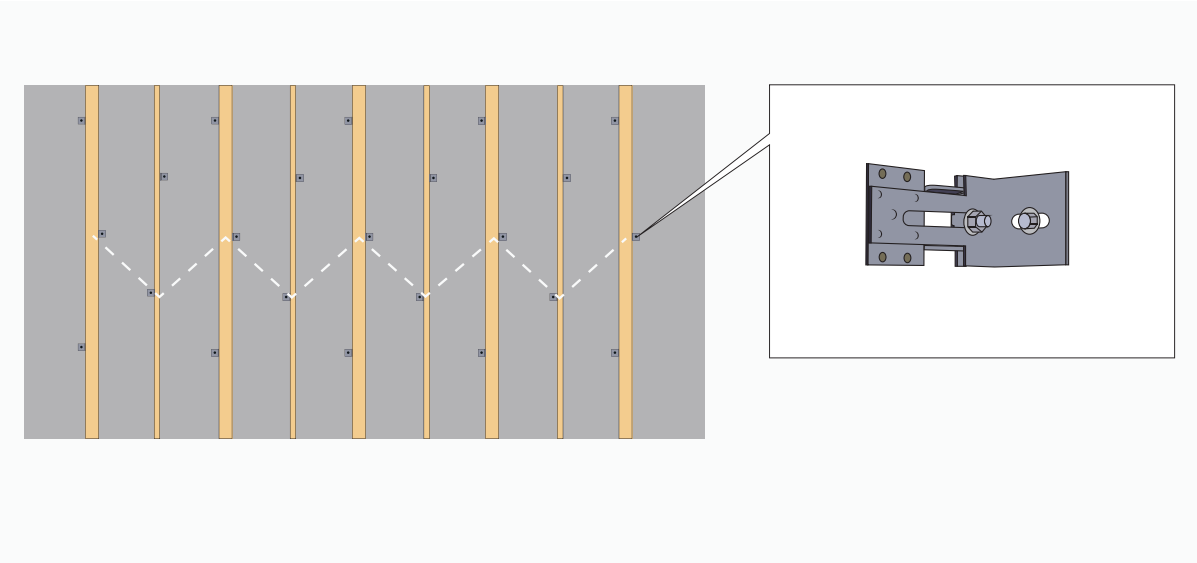
\*\* Hvis der anvendes en perforeret ventilationsprofil.

\*\*\* Hulrummet X øges med højden af facaden og den lodrette afstand IND & UD øges.

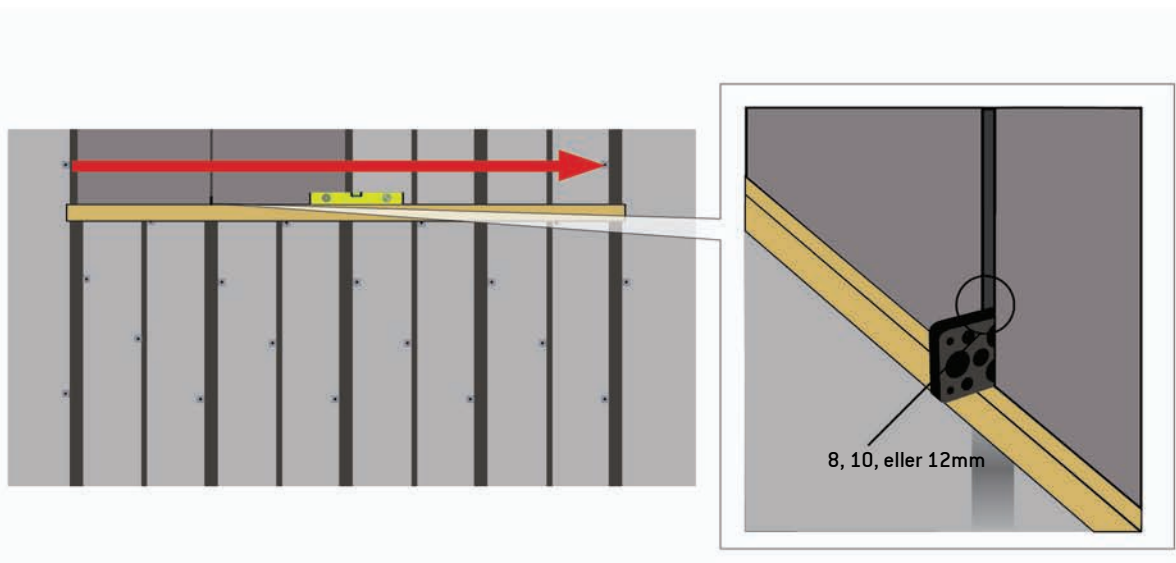
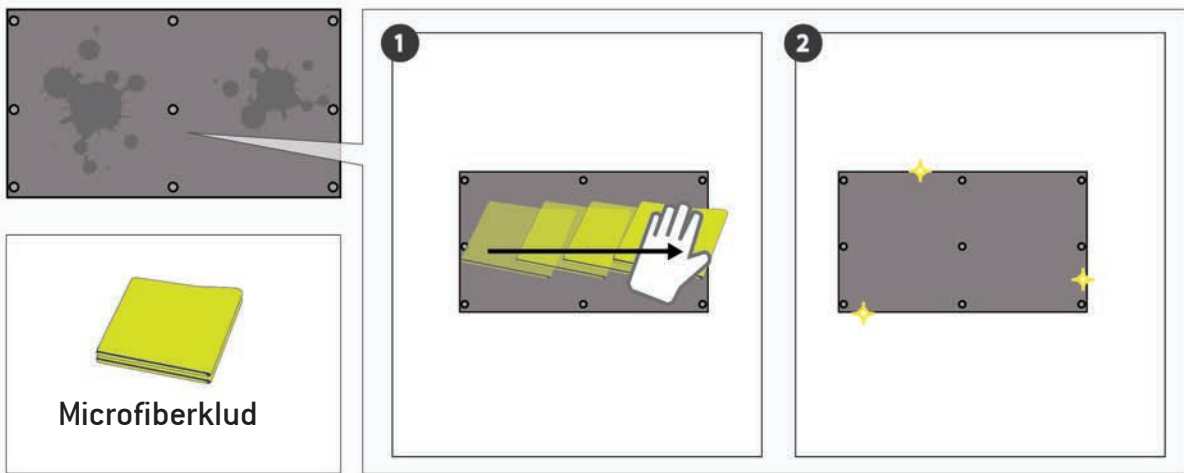
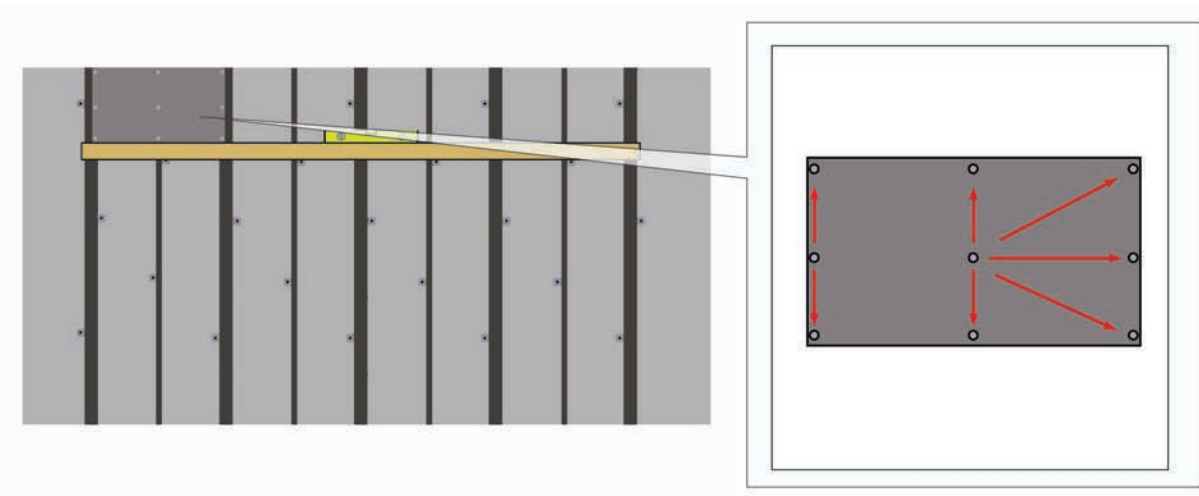
# INSTALLATION

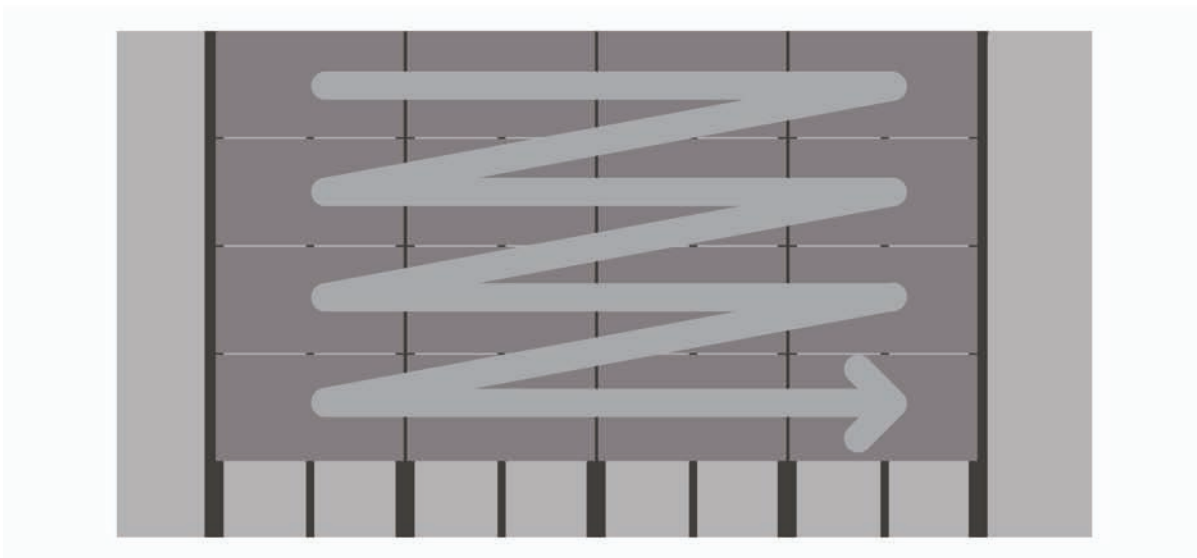
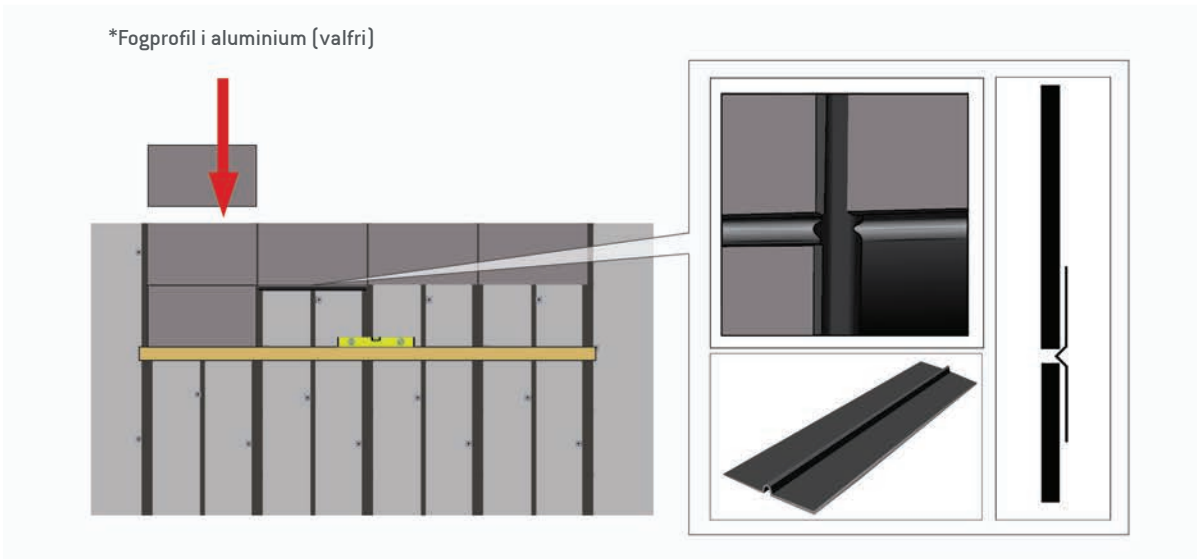
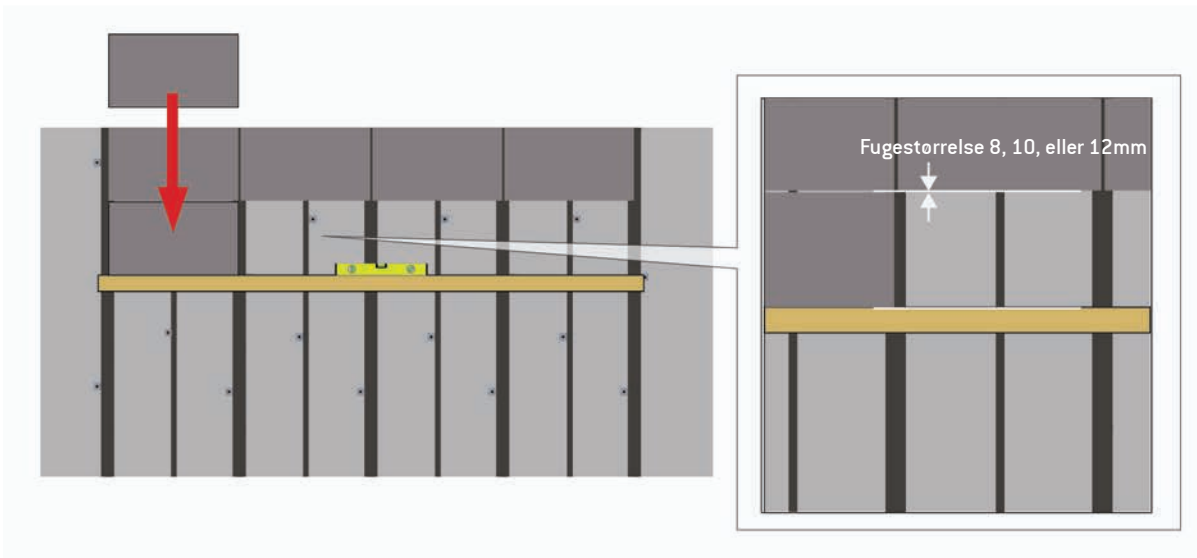
Typiske muligheder for fastgørelse af lægter

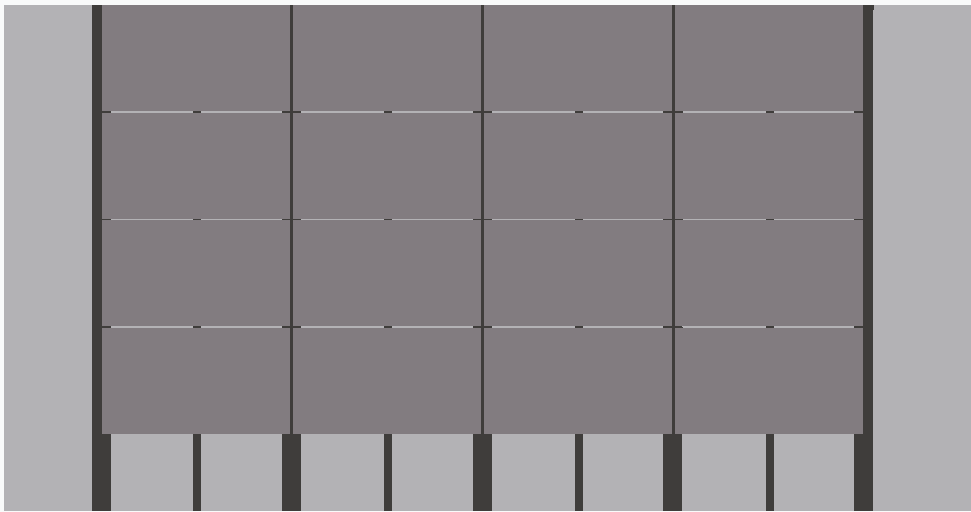




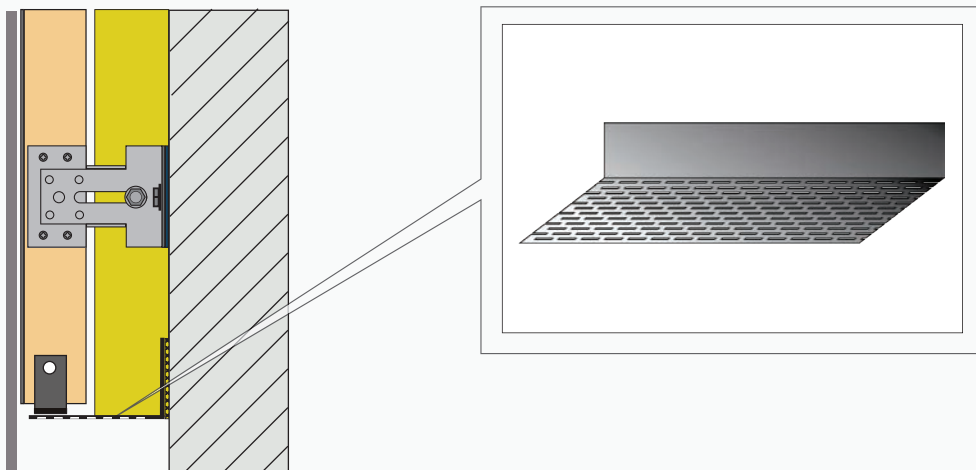




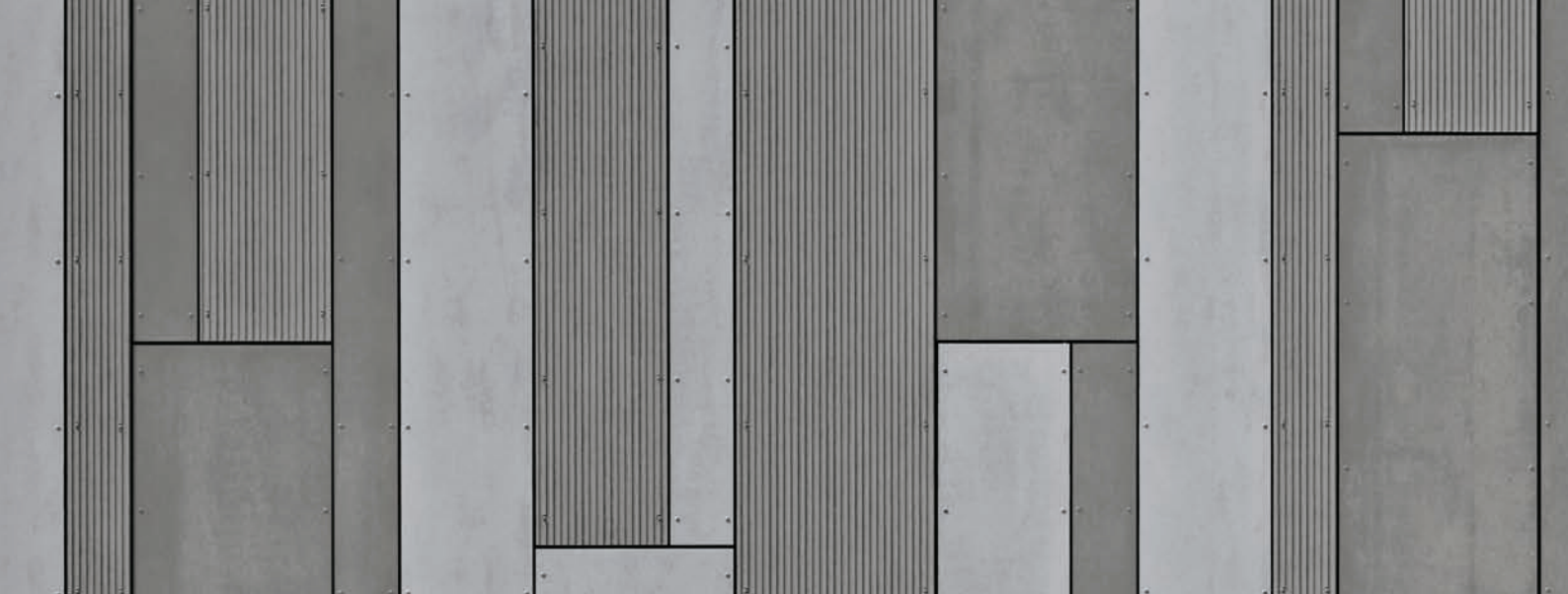




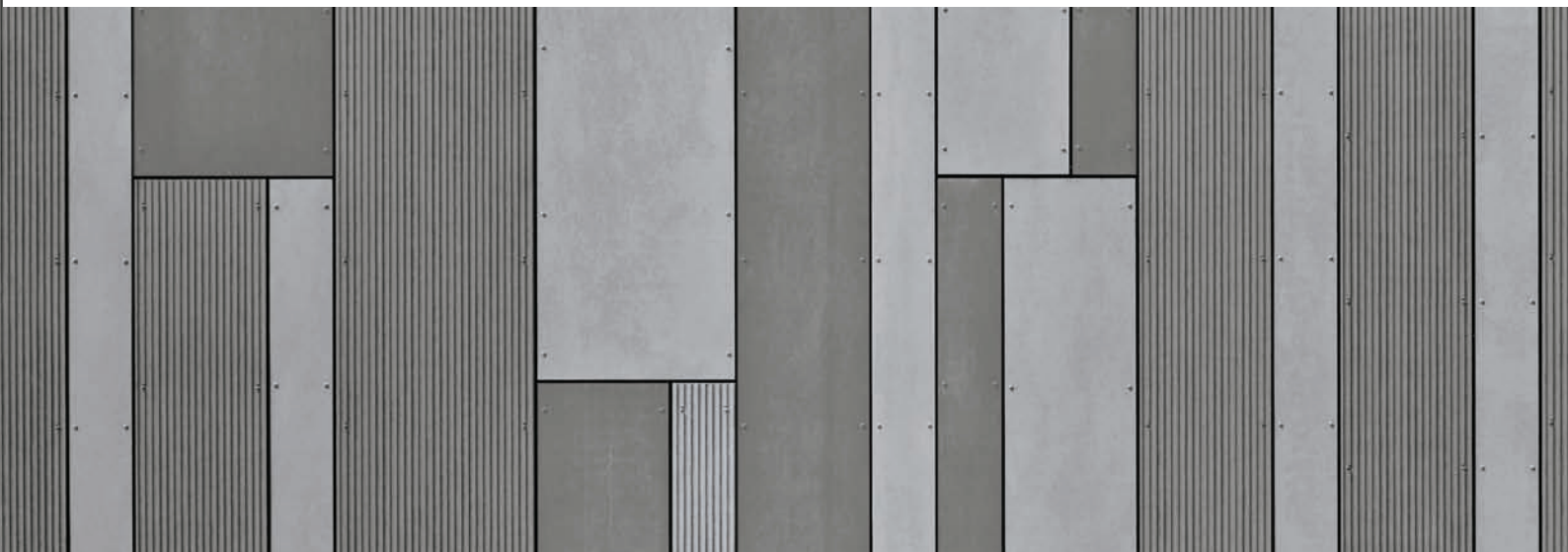
\*Perforerad Ventilationsprofil







 **EQUITONE**  
Fibre cement facade materials



[www.equitone.com](http://www.equitone.com)

Etex Nordic A/S  
Vendersgade 74 | 7000 Fredericia  
T: +45 7366 1999 | [etexnordic-dk@etexgroup.com](mailto:etexnordic-dk@etexgroup.com)